

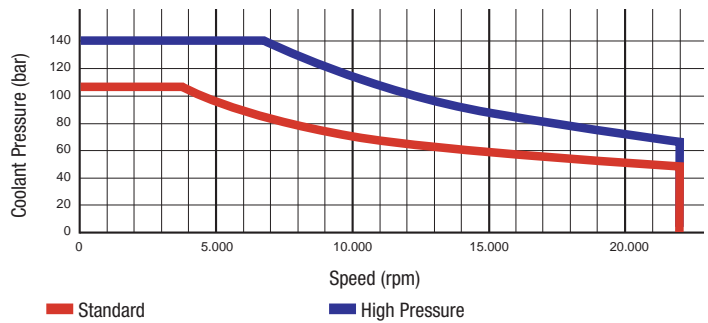
DEUBLIN

1114 Series AutoSense™ Rotor-Mounted Rotating Unions for Coolant and Air Service and Dry Running

- Single passage for both coolant and dry air
- Patented AutoSense™ technology automatically changes between closed seals and controlled leakage operation in response to the kind of media
- Dual ABEC 7 (ISO class P4) angular contact ball bearings
- Threaded rotor for easy installation
- Full-flow design has no obstructions to trap swarf or debris
- Labyrinth system and large vents to protect bearings
- Balanced mechanical seals made from silicon carbide for long life even under difficult operating conditions
- Aluminium housing, endcap anodised resists corrosion

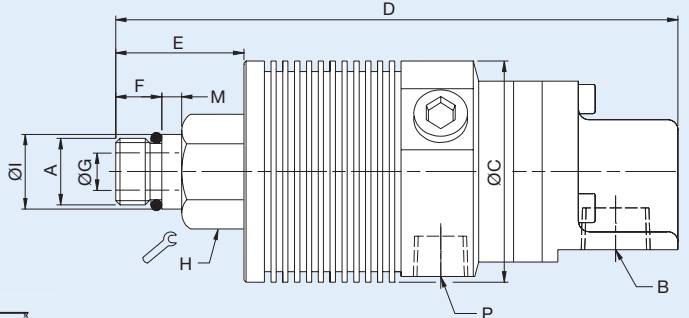
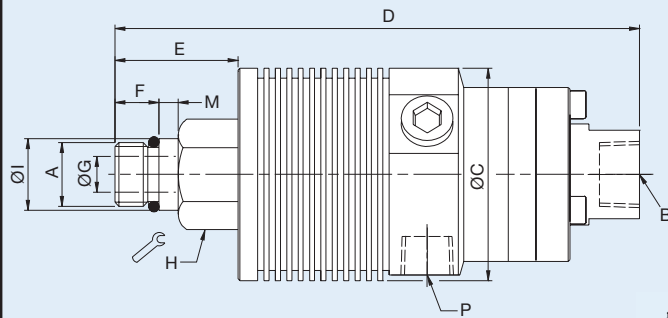
Operating Data

Media	Water-based Coolant MQL (oil mist) up to 10 bar (145 psi) Air up to 10 bar (145 psi)		
Filtration	ISO 4406 Class 17/15/12, max. 60 micron		
Max. Speed	22.000 min ⁻¹	22,000 rpm	
Max. Pressure	see chart		
Max. Flow	82 l/min	21.6 gpm	Standard
	24,3 l/min	6.4 gpm	High Pressure
Max. Temperature	71 °C	160 °F	



Axial Connection

Radial Connection



	Ordering Number	B Supply Connection	C Overall Diameter	D Overall Length	P Drain Size Ø (3 x 120°)	A Rotor Connection	E Rotor Length	F Thread Length	G Bore Diameter	H Across Flats	I Pilot Diameter	M Pilot Length
Standard	1114-021-188	G 3/8 Axial	53	131	G 1/4	M16 x 1.5 LH	31	11	9	24	17.993 / 17.988	5
	1114-020-188	G 3/8 Radial	53	137	G 1/4	M16 x 1.5 LH	31	11	9	24	17.993 / 17.988	5
	1114-040-188	3/8 PT Radial	53	137	1/4 PT	M16 x 1.5 LH	31	11	9	24	17.993 / 17.988	5
High Pressure	1114-024-212	G 1/4 Axial	53	131	G 1/4	M16 x 1.5 LH	31	11	9	24	17.993 / 17.988	5
	1114-044-212	1/4 PT Axial	53	131	1/4 PT	M16 x 1.5 LH	31	11	9	24	17.993 / 17.988	5
	1114-023-212	G 1/4 Radial	53	137	G 1/4	M16 x 1.5 LH	31	11	9	24	17.993 / 17.988	5

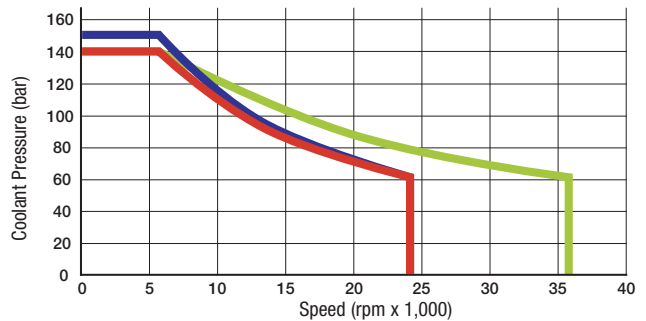
DEUBLIN

1114 Series AutoSense™ Bore-Mounted Rotating Unions for Coolant and Air Service and Dry Running

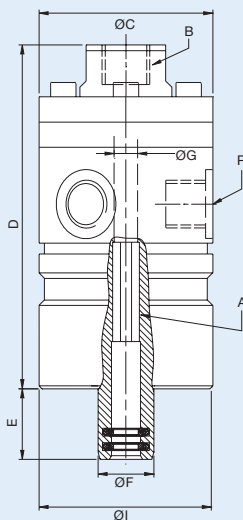
- Single passage for both coolant and dry air
- Patented AutoSense™ technology automatically changes between closed seals and controlled leakage operation in response to the kind of media
- Bore-mounted design for easy installation
- Accepts up to 19 mm of axial drawbar movement
- Matched, ISO class P4 hybrid ball bearings for smooth operation at high speeds
- Labyrinth system and large vents to protect ball bearings
- Full-flow design has no obstructions to trap swarf or debris
- Balanced mechanical seals made from silicon carbide for long life even under difficult operating conditions
- Anodised aluminium and stainless steel parts resist corrosion

Operating Data

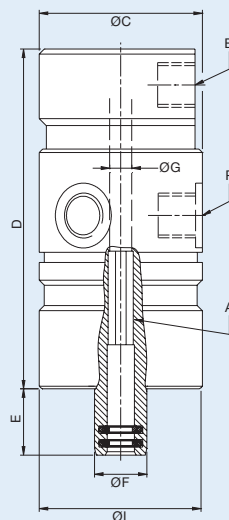
Media	Water-based Coolant MQL (oil mist) up to 10 bar (145 psi) Air up to 10 bar (145 psi)	
Filtration	ISO 4406 Class 17/15/12, max. 60 micron	
Max. Speed	see chart/table	
Max. Pressure	see chart/table	
Max. Flow		
1114-710-xxx	82 l/min	21.6 gpm
1114-842-730	82 l/min	21.6 gpm
1114-331-105	24,3 l/min	6.4 gpm
1114-92x-930	24,3 l/min	6.4 gpm
Max. Temperature	71 °C	160 °F



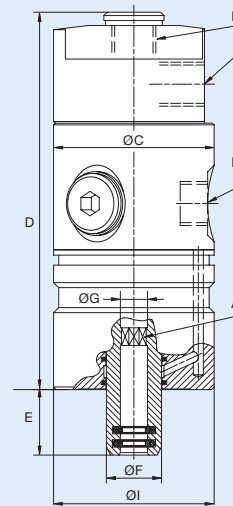
Axial Connection



Radial Connection



Example 1114-842-730



	Ordering Number	B Supply Connection	C Overall Diameter	D Housing Length	P Drain Size Ø (3 x 120°)	A Rotor Connection	E Rotor Length	F Rotor Overall Diameter	G Bore Diameter	I Pilot Diameter	Max. Speed (rpm)	Max. Pressure (bar)
	1114-331-105	G ¼ Radial	48	88.5	4x G ½	Octagon 7.4 D10	19.5	15.4	8.1 F9	48 h7	24,000	140
	1114-710-730	G ¾ Axial	59	111	G ¼	Octagon 9.25 D10	19.5	20	10 F9	48 g6	24,000	140
	1114-710-717	G ¾ Axial	59	111	G ¼	Hexagon 12 D10	25	18	11 H7	48 g6	24,000	140
	1114-842-730	G ¼ Axial & Radial	48	120	G ¼	Octagon 9.25 D10	19.5	16	10 F9	48 g6	24,000	150
	1114-927-930	G ¼ Axial	48	95	G ¼	Octagon 7.4 D10	19.5	15.4	8.1 F9	48 h7	36,000	140
	1114-926-930	G ¼ Radial	48	95	G ¼	Octagon 7.4 D10	19.5	15.4	8.1 F9	48 h7	36,000	140