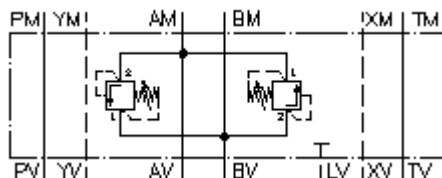


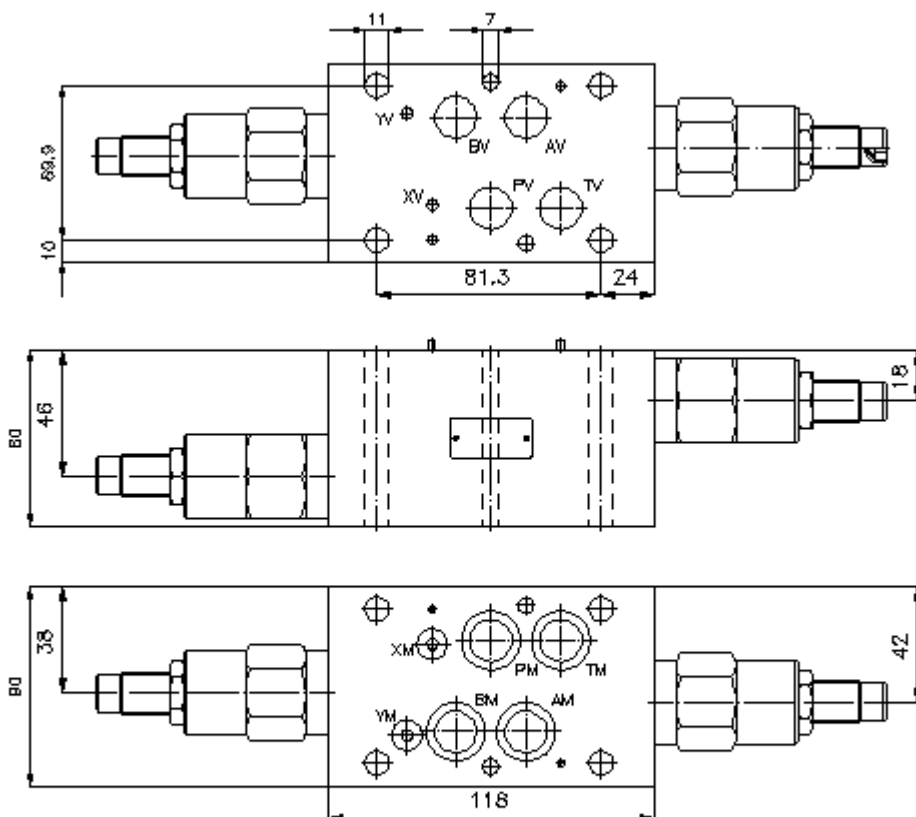
**dual relief valve, CETOP 7
(sandwich plate) A to B+B to A
DDBVZ-16.-03S/..**



IMAV-Hydraulik GmbH

IZ-425-500-00

(Subject to change!)



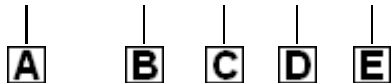
**dual relief valve, CETOP 7
(sandwich plate) A to B+B to A
DDBVZ-16.-03S/..**



IMAV-Hydraulik GmbH

Ordering example:

DDBVZ - 16A - 03 S / 35



IZ-425-500-00

(Subject to change!)

Model code:

A design
bi-directional relief-valve
with mounting interface DIN 24340 form A
sandwichplate design

B size and material
16A = aluminum (F37)
16S = steel (9SMnPb28K resp. GGG-40)

C relief valve
03 = RV3-16.-.. (direct acting) see data
sheet no.: MP-150-161-00

D adjustment
S = screw adjustment

E pressure range
RV3-16.-..
05 = 3.5 - 35 bar
13 = 35.0 - 90 bar
35 = 83.0 - 240 bar
50 = 140.0 - 350 bar

Technical Data:

nominal pressure: 250 bar (A)
350 bar (S)
nominal flow: 305 l/min
weight: 3.8 / 7.9 kg (A/S)
included: 4 pcs. O-ring 22.22 x 2.62
2 pcs. O-ring 9.19 x 2.62