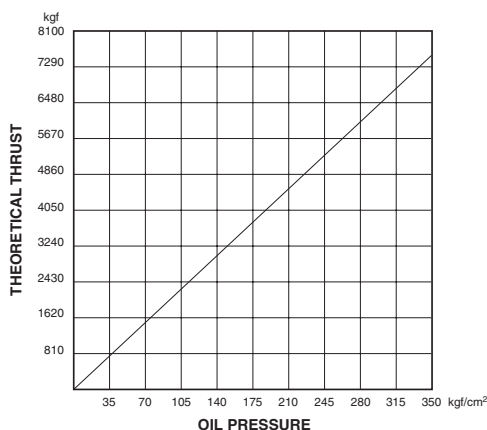


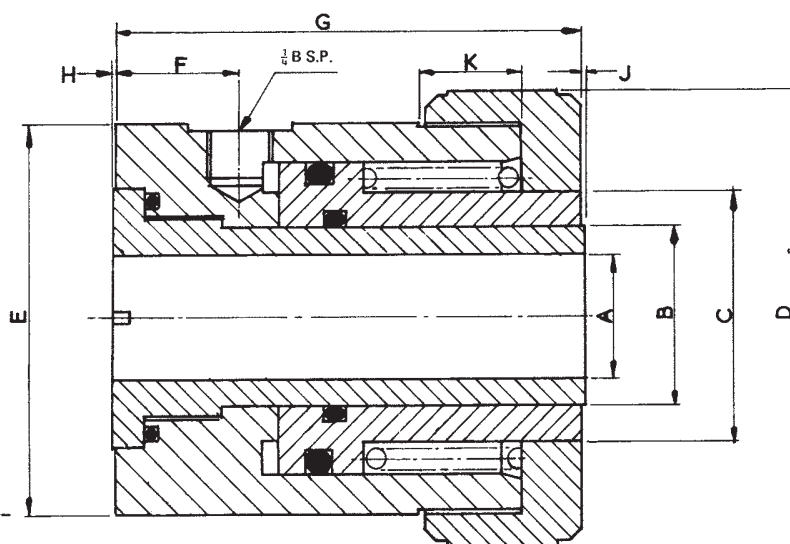
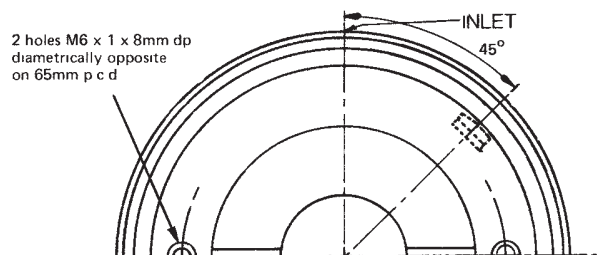


PowRlock® OpenRam Five-Ton Head

Technical Information



To calculate thrust per head obtain system oil pressure from booster data sheet (inside front cover) and read off from graph.



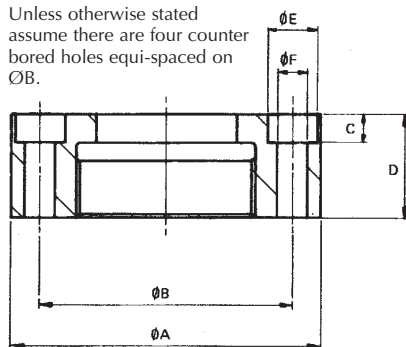
Body/Cap Thread
3/8 - 16 - UN

Stroke*		Effective Area cm²	Swept Volume		Dimensions in mm										Weight		WDS No	Seal Kit No
With Spring mm	Without Spring mm		With Spring cm³	Without Spring cm³	A	B	C	D	E	F	G	H	J	K	With Spring kg	Without Spring kg		
17.02	31.75	21.23	33.44	67.35	25.80	36.51	50.80	92.08	79.38	25.40	96.80	0.25	0.76	20.64	3.18	3.13	SF-5500	SF-5599

* Do not exceed Maximum Stroke

Mounting: To include these heads in a fixture it is only necessary to mount them over 25mm dia. studs or bolts via the hole through the centre of each head.

Unless otherwise stated assume there are four counter bored holes equi-spaced on ØB.



OPTIONAL VARIATIONS FOR STANDARD TYPE 5500 OPENRAM

Part No. SF-5500FL – Front flange mounting (circular) instead of screwed cap.

Dimensions in mm						Flange No
A	B	C	D	E	F	
127	101.6	10.4	31.7	16.6	10.3	SF-5501FL

