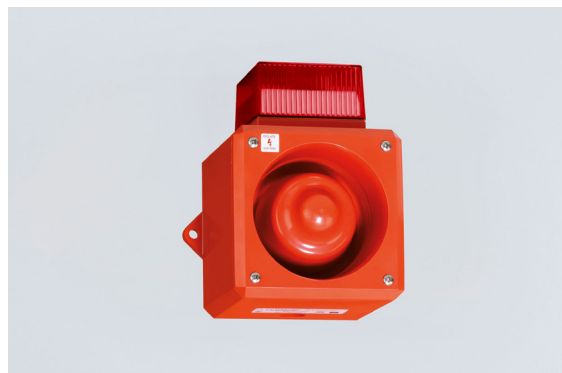


Signalling Devices

Combination Signal Device Sounder/Flashing LED Beacon

intrinsically safe

YL5/ISC/T4/R/RF Art. No. 204796



- Flame retardant ABS enclosure
- Ex ia electronics
- Max sound output 105 dB (A) @ 1 m
- 8 LED array flashing beacon
- 2 stage alarm, independently selectable 2nd stage
- Each with 32 selectable tones in accordance with international regulations
- Independent tone selection using a DIL switch for each pitch
- 15 dB(A) volume control adjustment (only T4 models)
- Stainless steel fixings
- Monitoring facility
- M20 cable entry pre-punched

WebCode **YL5ISA**



Yodalex range

Combination audible and visual signal designed for use in hazardous environments.

This product series can be powered using a combined supply through a single barrier or the sounder and beacon can be wired independently using two single barriers or one dual channel barrier.

Technical Data

Explosion Protection

Application range (Zone)	0 1 2 20 21 22
Certificate ATEX Gas	Baseefa 08 ATEX 0194 X
Certificate ATEX Dust	Baseefa 08 ATEX 0194 X
Ambient temperature °C	-25 ... +40 °C
Gas explosion protection IECEx	Ex ia IIC T4 Ga
Gas explosion protection ATEX	Ex II 1 G Ex ia IIC T4 Ga
Dust explosion protection IECEx	Ex ia IIIC T190 °C Da
Dust explosion protection ATEX	Ex II 1 D Ex ia IIIC T190 °C Da
Certificates	ATEX (BAS), India (PESO)
Languages of documentation	German English

Safety Data

Max. Power P_i	0.7 mW
Max. Voltage U_i	30 V
Max. Current I_i	133 mA

Electrical Data

Rated operational voltage DC	24 – 24 V
Line monitoring	Yes

Acoustic Data

Sound pressure level	max. 105 dB(A) @ 1m
Sound selection	via DIL switch
Sound stages	2
Volume control	15 dB(A) adjustment

Signalling Devices

Combination Signal Device Sounder/Flashing LED Beacon

intrinsically safe

YL5/ISC/T4/R/RF Art. No. 204796

STAHL

Lighting Data

Number of Lamps	8
Lamps	LED
Flash rate	1 Hz

Ambient Conditions

Min. ambient temperature	-25 °C
Max. ambient temperature	+40 °C
Ambient temperature	-25 °C ... +40 °C
Operating temperature	-25 °C ... +40 °C
Operating temperature min.	-25 °C
Operating temperature max.	+40 °C

Mechanical Data

Type of protection IP (IEC 60529)	IP65
Enclosure material	ABS, flame retardant
Material Fixing elements	Stainless steel
Trumpet material	ABS, flame retardant
Material Dome	Polycarbonate, prismatic
Weight	1.09 kg
Connection terminals solid max.	2.5 mm ²
Connection terminals finely-stranded max.	2.5 mm ²
Width	169 mm
Height	194.5 mm
Length	128 mm
Lens Colour	Red
Enclosure colour	red flame

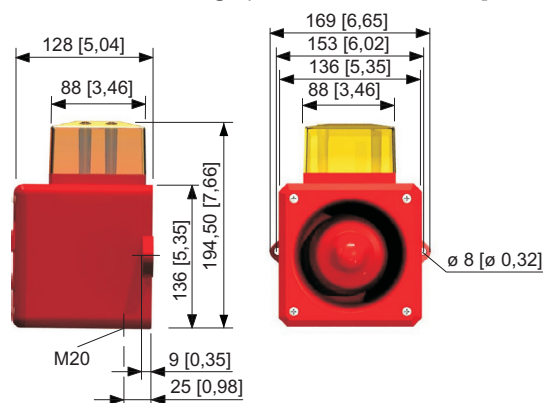
Mounting / Installation

Connection type	Screw terminal
-----------------	----------------

Components

Drilled hole	1 x M20
Cable entry	to be ordered as accessory
Plug	without

Dimensional Drawings (All Dimensions in mm [inches]) – Subject to Alterations



Signalling Devices





Combination Signal Device Sounder/Flashing LED Beacon

intrinsically safe

YL5/ISC/T4/R/RF Art. No. 204796

STAHL

Accessories and Spare Parts

Galvanic isolator		Art. No.
	single channel	160472
	dual channel	165567
Series 9001/01, Single-channel safety barriers for positive polarity		Art. No.
	single channel	158351
Series 9002/11; Potential: positive / positive		Art. No.
	dual channel	158848
Cable gland		Art. No.
	8161/8 Ex i (black with blue cap nut) 8161/8-M20-1304 4 ... 13 mm ² 50 pieces (delivery lot*)	239164

We reserve the right to make alterations to the technical data, dimensions, weights, designs and products available without notice. The illustrations cannot be considered binding.