

Model TM TESLA METER

Significant improvement of performance while keeping usability of TM-701! New industry standard of handy type



AC adapter connection port



USB cable connection port

TM-801EXP

The Tesla Meter is a practical, handy type Gauss meter having digital display that has been developed based on KANETEC's long experience and achievements in the manufacture of magnetism-applied products. To satisfy the user's needs, this meter has been designed for easy use by anyone by incorporating frequently used functions only.

[Application]

- Measurement of residual magnetism in machined workpieces.
- Measurement of magnetic flux density in magnetism-applied products.
- Measurement of magnetic flux density of motors.
- Measurement of properties of magnetic materials.

[Features]

- A wide measuring range from 0 to 3000 mT. (DC)
- In addition to DC magnetic flux density, AC magnetic flux density can be measured.
- The high resolution measuring mode ensures highly accurate measurement. (Resolution 0.01 mT = 0.1 G)
- The use of sheet keys ensures high dustproof performance.
- The auto power off function prevents useless consumption of the battery.
- When the probe has been worn out, it can be replaced with a new one without troublesome calibration. (Optional)

A calibration certificate (manufacturer calibration or JCSS calibration) is issued upon request. (Charged)

Features of TM-801EXP (compared with TM-701)

Wider measuring range

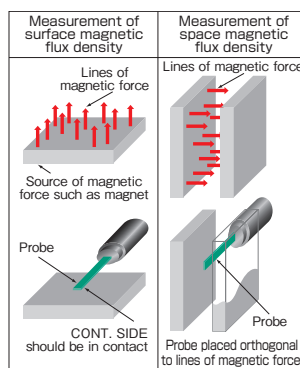
- High resolution mode accuracy in measurement of DC magnetic flux density improved.
- Frequency covering range in measurement of AC magnetic flux density expanded. (40 – 500 Hz)

Max. 160 hours of continuous operation and high-speed sampling

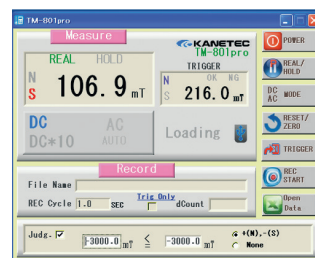
- Sampling speed in HOLD mode increased by 1.5 times.
- Continuous operation time by use of a battery improved by 20% (130 hours → 160 hours).
- 3-way power supply usable: battery, AC adapter and USB feed.

PC operation simpler and more useful

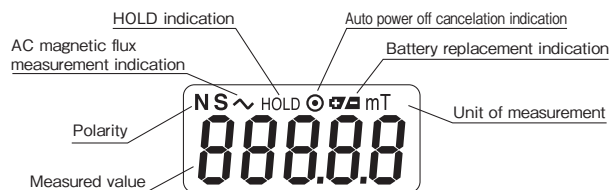
- Digital output of measured data to PC by use of USB.
- Measurement commands controllable from PC by use of USB.
- PC free sample software renewed completely.



Simplified measuring method



PC free software renewed completely



Simple and easy-to-read display

Specifications

(1mT=10G)

Model	TM-801EXP				Function	Zero reset	Polarity judgment
Object to detect	DC magnetic flux density AC magnetic flux density Polarities (N, S) 40 – 500 Hz				Output	Max. detect value hold	Auto power off (Cancellable)
Unit of measurement	mT/G selection				Indication	Detected value	Digital
Measurement range	0-3000.0mT				Operating temperature	Polarity	Alphabets (N/S)
Measurement mode	Measurement mode	Measuring range	Resolution	Indication accuracy*1	Power source	Approx. 250 g/0.55 lb (batteries & probe included)	
	DC × 1*	0- 200.0 mT	0.1 mT	± (5% of rdg. + 3digit)	Dimensions		
		200.1-3000.0 mT	1 mT	± (5% of rdg. + 10digit)	Mass	Approx. 250 g/0.55 lb (batteries & probe included)	
	DC × 10	0- 300.00mT	0.01mT	± (3% of rdg. + 5digit)	Accessories		
Indication accuracy	AC*	0- 150.00mT	0.01mT	± (5% of rdg. + 20digit)	Optional	Probe, batteries, carrying case Axial probe (TM-801 AXL) Reference magnetic field (TM-SMF, TM-AMF)	
		150.1- 300.0 mT	0.1 mT				
		301.0-1500.0 mT	1 mT				

*The measuring range is automatically selected. Note: This meter is not designed for measurement of electromagnetic waves.

※1 The indication accuracy ±(5% of red. + 3 digits) is ±(5% of indicated value + 3 × resolution). "digit" = Resolution
Example: Measurement mode DC × 1, indicated value 123.5 mT (Measuring range 0 – 200 mT, resolution 0.1 mT)
±(123.5 × 0.05 + 3 × 0.1) = ±6.475 mT ≈ ±6.5 mT Accuracy range is 117.0 – 130.0 mT