

Codice ordinazione
Ordering code

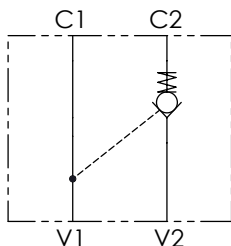
01

02

VRSE

01	Valvole di blocco a semplice effetto (Single acting pilot check valves)	VRSE
02	Dimensione (Size)	BSPP 1/4
		BSPP 3/8
		BSPP 1/2
		BSPP 3/4

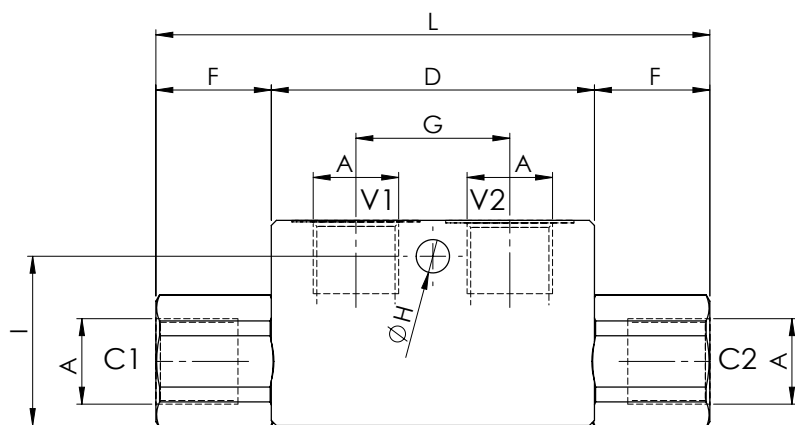
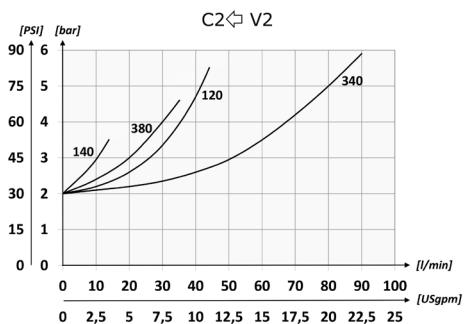
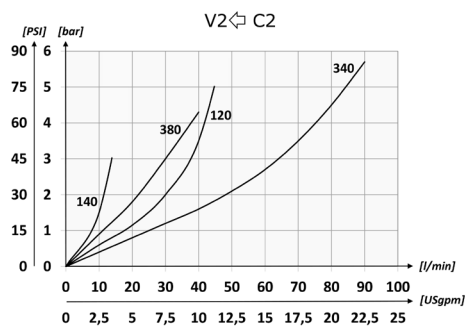
Schema idraulico - Hydraulic circuit



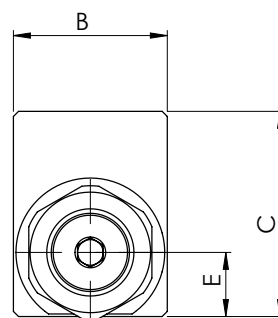
Dati tecnici - Technical data

Olio idraulico/Mineral oil	ISO 6743/4 (DIN 51524)
Viscosità olio/Oil viscosity	15-250 mm ² /s (15 to 250 cSt)
Classe di contaminazione max con filtro Max contamination index with filter	ISO 4406:1999 Classe 19/17/14
Temperatura dell'olio/Oil temperature	-20°C +80°C -4°F +176°F
Temperatura ambiente/Ambient temperature	-20°C +50°C -4°F +122°F
È indispensabile l'utilizzo di un filtro per proteggere la valvola (filtrazione consigliata 15 µm) It is necessary a filter use to protect the valve (advised filtration 15 µm)	
Trafilamento massimo Max leakage	0,25 cm ³ /min - 5 gocce/min 0,015 in ³ /min - 5 drops/min

Performances



mm
(Inches)



Caratteristiche tecniche - Technical characteristics

Tipo Type	A	Portata max (l/min) Max flow (USgpm)	Pressione max (bar) Max pressure (PSI)	B	C	D	E	F	G	H	I	L	Peso approssimativo (kg) Approx weight (lb)	Rapporto di pilotaggio Pilot ratio
VRSE140	BSPP 1/4	15 (4)	320 (4640)	30 (1.18)	40 (1.57)	63 (2.48)	12,5 (0.49)	22,5 (0.89)	30 (1.18)	6,5 (0.26)	33 (1.30)	108 (4.25)	0,64 (1.41)	1:4
VRSE380	BSPP 3/8	35 (9.2)		35 (1.38)	50 (1.97)	82 (3.23)	16,5 (0.65)	31,5 (1.24)	36 (1.42)		35 (1.38)	145 (5.71)	0,59 (1.30)	
VRSE120	BSPP 1/2	45 (11.9)	300 (4350)	40 (1.57)	60 (2.36)	100 (3.94)	22,5 (0.89)	46 (1.81)	50 (1.97)	8,5 (0.33)	50 (1.97)	192 (7.56)	1,08 (2.38)	
VRSE340	BSPP 3/4	70 (18.5)		40 (1.57)	60 (2.36)	100 (3.94)	22,5 (0.89)	46 (1.81)	50 (1.97)		50 (1.97)	192 (7.56)	2 (4.41)	1:2.9