

LUB 65

Pump Model

appx. 2900 rpm.

Threephase
Induction Motor

kW

≈ L

≈ M

Pump

A

B

Net weight

≈ lbs.

LUB 65 C

1.5

9.61

5.85

3.66

6.46

88.18

2.2

10.98

5.85

3.66

6.46

94.8

3.0

10.98

5.85

3.66

6.46

108.03

4.0

12.72

6.69

3.66

6.46

123.46

LUB 65 D

1.5

9.61

5.85

3.66

6.54

88.18

2.2

10.98

5.85

3.66

6.54

94.8

3.0

10.98

5.85

3.66

6.54

108.03

4.0

12.72

6.69

3.66

6.54

123.46

LUB 65 Z

3.0

10.98

5.85

3.66

6.34

108.03

4.0

12.72

6.69

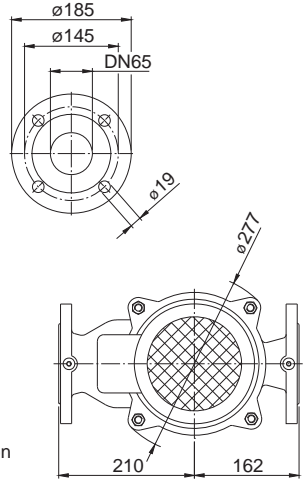
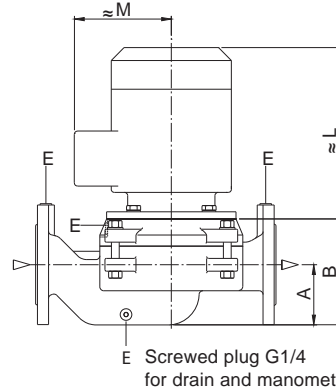
3.66

6.43

123.46

Inches

Suction- and delivery flange
DIN EN 1092-2, PN16



LUB 80

Pump Model

appx. 2900 rpm.

Threephase
Induction Motor

kW

≈ L

≈ M

Pump

A

B

Net weight

≈ lbs.

LUB 80 C

4.0

13.66

6.42

4.13

8.94

145.51

5.5

15.95

7.64

4.13

8.94

180.78

7.5

15.95

7.64

4.13

8.94

202.83

LUB 80 D

4.0

13.66

6.42

4.13

9.02

145.51

5.5

15.95

7.64

4.13

9.02

180.78

LUB 80 E

3.0

10.98

5.91

4.13

9.09

123.46

4.0

13.66

6.42

4.13

9.09

145.51

5.5

15.95

7.64

4.13

9.09

180.78

7.5

15.95

7.64

4.13

9.09

202.93

LUB 80 F

3.0

10.98

5.91

4.13

9.17

145.51

4.0

13.66

6.42

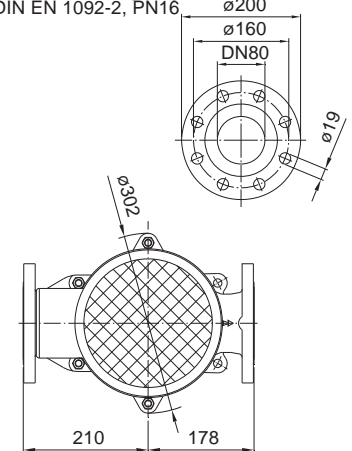
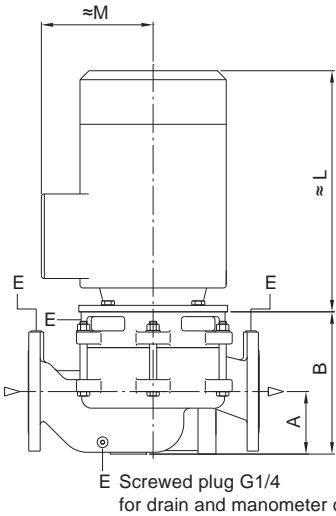
4.13

9.17

180.78

Inches

Suction- and delivery flange
DIN EN 1092-2, PN16



LUB 100

Pump Model

appx. 2900 rpm.

Threephase
Induction Motor

kW

≈ L

≈ M

Pump

A

B

Net weight

≈ lbs.

LUB 100 E

4.0

13.11

6.81

8.07

14.5

244.71

5.5

16.77

7.40

8.07

14.5

297.62

7.5

16.77

7.40

8.07

14.5

310.85

11.0

18.82

8.9

8.07

14.5

352.74

15.0

19.8

9.84

8.07

14.5

405.65

LUB 100 G

4.0

13.11

6.81

8.07

14.64

244.71

5.5

16.77

7.40

8.07

14.64

297.62

7.5

16.77

7.40

8.07

14.64

310.85

11.0

18.82

8.9

8.07

14.64

352.74

15.0

19.8

9.84

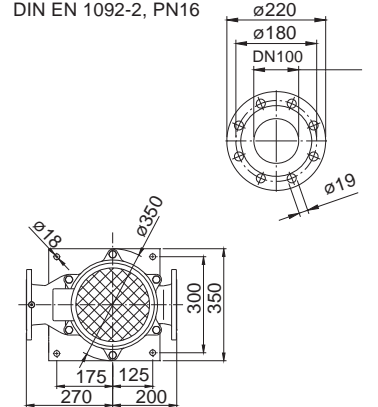
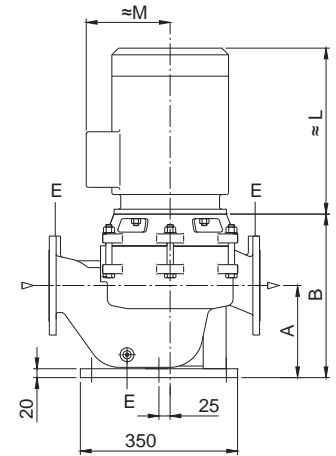
8.07

14.64

405.65

Inches

Suction- and delivery flange
DIN EN 1092-2, PN16



LUB

Motor: - 60Hz

Attention: actual motor dimensions possible may differ from the drawing.

Subject to alteration! ANSI Companion flanges available upon request

Vertical In-Line Centrifugal Cooling Pump