

# Pilot operated check, pilot to open Common cavity, Size 12

VSON-12A

04.33.07 - X - 57 - Z

**RE 18319-32**

Edition: 01.2019

Replaces: 03.2016



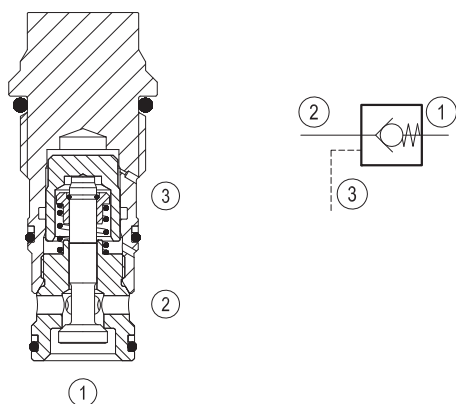
## Description

When pressure at 2 rises above the spring bias pressure, the poppet is pushed from its seat and flow is allowed from 2 to 1. The valve is normally closed (checked) from 1 to 2. When sufficient pilot pressure is present at port 3, the pilot piston acts to push the poppet from its seat and flow is allowed from 1 to 2. Precision machining and hardening processes allow virtually leak-free performance in the checked condition.

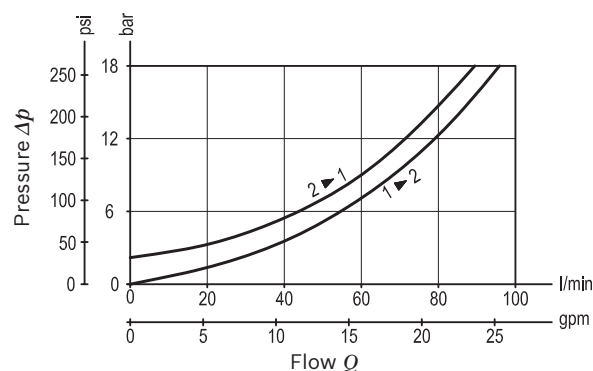
## Technical data

Max. operating pressure	350 bar (5000 psi)
Max. flow	120 l/min. (32 gpm)
Pilot ratio	3.2:1
Max. internal leakage	5 drops/min.
Fluid temperature range	-30 to 100 °C (-22 to 212 °F)
Installation torque	81 - 95 Nm (60 - 70 ft-lbs)
Weight	0.25 kg (0.55 lbs)
Cavity	CA-12A-3C (see data sheet 18325-70)
Lines bodies and standard assemblies	Please refer to section "Hydraulic integrated circuit" or consult factory
Seal kit <sup>1)</sup>	Code: RG12A9010520100 material no: R901111379
Fluids	Mineral-based or synthetics with lubricating properties at viscosities of 5 to 800 mm <sup>2</sup> /s (cSt)
Recommended degree of fluid contamination	Nominal value max. 10µm (NAS 8) / ISO 4406 20/18/15
Installation position	No restrictions
Other Technical Data	See data sheet 18350-50

1) Only external seals for 10 valves



## Characteristic curve



Ordering code

Ordering code		04.33.07	X	57	Z	00	*						
Pilot operated check, pilot to open		Series 0/A to L unchanged performances and dimensions											
O-Ring on pilot piston		Version and options standard											
00 No O-Ring		<table><tr><th colspan="2">SPRINGS</th></tr><tr><td colspan="2">Cracking pressure bar (psi)</td></tr><tr><td>00</td><td>2 (30)</td></tr></table>						SPRINGS		Cracking pressure bar (psi)		00	2 (30)
SPRINGS													
Cracking pressure bar (psi)													
00	2 (30)												
10 With O-Ring													
57 Common cavity, Size 12													

Preferred types

Type	Material number	Type	Material number
043307005700000	R930006106		
043307105700000	R901106634		

Dimensions

