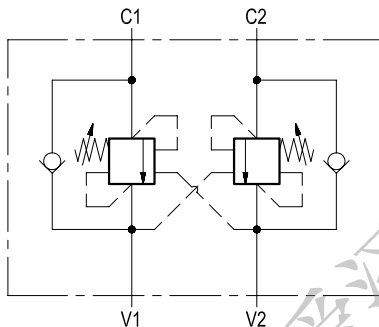


Dual counterbalance

A-VBSO-DE-30

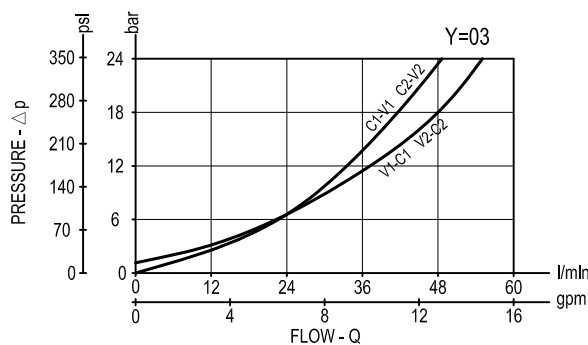
08.44.07 - X - Y - Z



Description

It provides static and dynamic control of load by regulating the flow IN and OUT of the actuator, through ports C1 and C2. This valve module includes 2 sections, each one composed by a check and a relief valve pilot assisted by pressure in the opposite line: the check section allows free flow into the actuator, then holds the load against reverse movement; with pilot pressure applied at the line across, the pressure setting of the relief is reduced in proportion to the stated ratio until opening and allowing controlled reverse flow. Back-pressure at V1 or V2 is additive to the pressure setting in all functions.

Performance



Technical data

Hydraulic

Max. operating pressure	bar (psi)	350 (5000)
Max. flow	l/min (gpm)	60 (16)

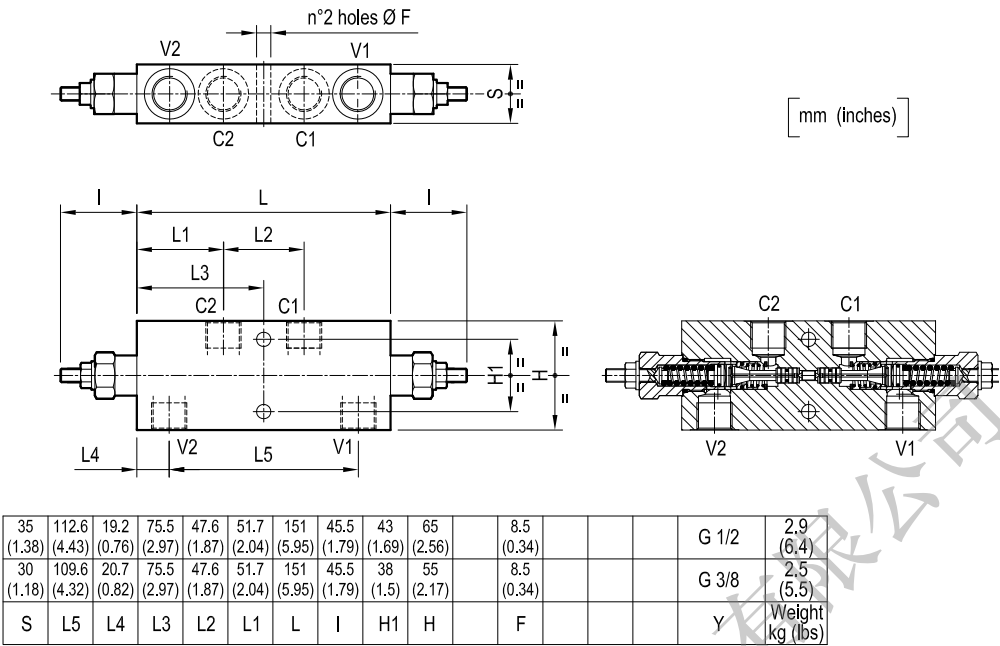
Relief setting: at least 1.3 times the highest expected load.

General

Manifold material	Steel
Weight	see "Dimensions"
Fluid temperature range	°C (°F) between -30 (-22) and +100 (212)
Other technical data	see data sheet RE 18350-50

Note: for applications outside these parameters, please consult us.

Dimensions



Ordering code

08.44.07

X

Y

Z

Dual counterbalance

Pilot ratio

= 03 4.2:1

Port sizes	V1-V2	C1-C2	
= 02	G 3/8	G 3/8	
= 03	G 1/2	G 1/2	

SPRINGS

Adj. pressure range bar (psi)	Pres. increase bar/turn (psi/turn)	Std. setting Q=5 (l/min.) bar (psi)
= 20 60-210 (870-3000)	63 (914)	200 (2900)
= 35 100-350 (1450-5000)	138 (2001)	350 (5000)

Tamper resistant cap
code 11.04.23.002
R930000752

Type	Material number	Type	Material number
08440703022000A	R930003364		
08440703023500A	R930003366		
08440703032000A	R930003373		
08440703033500A	R900338285		