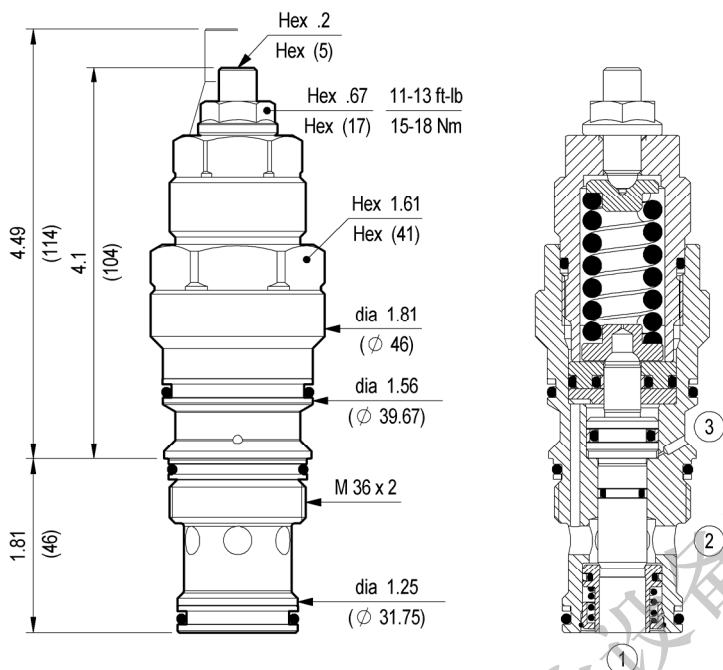


COUNTERBALANCE, STANDARD POPPET TYPE
DIFFERENTIAL AREA
SUN CAVITY INTERCHANGE

VBSN-16U

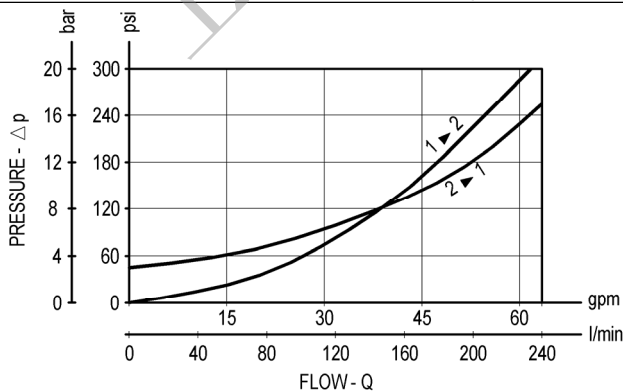
T-17A

04.52.35 - X - 47 - Z



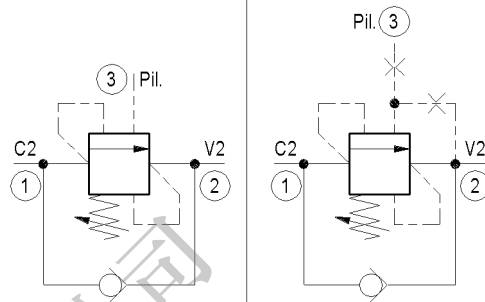
Inches
(mm)

When pressure at 2 rises above the spring bias pressure, the check seat is pushed away from the piston and flow is allowed from 2 to 1. When load pressure at 1 rises above the pressure setting, the direct-acting, differential area relief function is activated and flow is relieved from 1 to 2. With pilot pressure at 3, the pressure setting is reduced in proportion to the stated ratio of the valve, until fully open with free-flow from 1 to 2. The spring chamber is drained to 2, and any back-pressure at 2 is additive to the pressure setting in all functions.



Standard

With bleed through pilot



TECNICAL DATA

Max. pressure:	6000 psi	(420 bar)
Max. flow:	63 gpm	(240 l/min)
Cavity :	SUN T-17A	
External seal kit :	see page A11.211	
Installation torque :	148-159 ft-lb	(200-215 Nm)
Weight:	1.764 lbs	(0.800 Kg)

Pressure setting:
At least 1.3 times the load induced pressure

X PILOT RATIO

03	4 : 1	Standard version
10	8 : 1	Standard version
42	2 : 1	With bleed through pilot

SPRINGS

Z		Adj. press. range psi (bar)	Press. Increase psi / turn (bar/turn)	Standard setting psi (bar) (Q=5 l/min)
X = 03	20	1000-4000 (70-280)	1160 (80)	2900 (200)
	40	2900-6000 (200-420)	1711 (118)	5000 (350)
X = 10	20	1000-4000 (70-280)	711 (49)	2900 (200)
	40	2900-6000 (200-420)	1117 (77)	5000 (350)
X = 42	20	1000-4000 (70-280)	1160 (80)	2900 (200)
	40	2900-6000 (200-420)	1711 (118)	5000 (350)

OPTIONS

Ordering code	Description
11.04.23.004	Tamper resistant cap
Special settings available. Contact factory authorized representative for ordering code.	