

Solenoid operated valves pilot operated poppet type

2-way normally open

Common cavity, Size 08

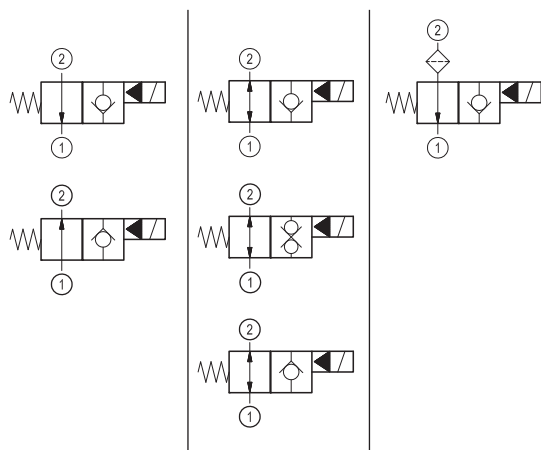
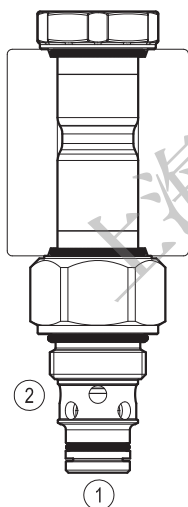
VEI-16-08A-NA

OD.15 - X - 18 - Y - Z - 00

RE 18323-26

Edition: 04.2018

Replaces: 02.2018

**PATENT PENDING****Technical data**

New VEI-16 family incorporates a new solenoid concept providing excellent performance and enables cartridges to work in severe environment. Cartridges also incorporates advanced design of hydraulic parts providing excellent hydraulic performance.

Technical data

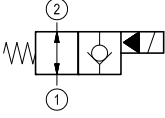
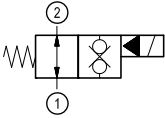
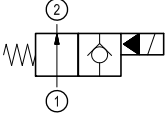
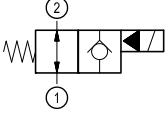
General		
Weight		0.15 kg (0.33 lbs)
Installation orientation		Unrestricted
Ambient temperature range		-30 to 90 °C (-22 to 194 °F)
Hydraulic		
Max. operating pressure		350 bar (5000 psi)
Flow range		0.5 - 40 l/min (0.1 - 11 gpm)
Fatigue cycle life		2 million cycles at 350 bar 150000 cycles at 420 bar
Max. internal leakage:		5 drops/min. for X= 02,06,08 20 drops/min. for X= 32,10,04
Switching time		Closing ≤ 100 ms Opening ≤ 30 ms
Fluid temperature range		-20 to 80 °C (-4 to 176 °F)
Fluids: Mineral-based or synthetics with lubricating properties at viscosities of 20 to 380 mm ² /s (cSt)		
Installation torque		39 - 51 Nm (29 - 38 ft-lbs)
Recommended degree of fluid contamination		Nominal value max. 10 µm (NAS 8) ISO 4406 19/17/14
MTTFd		150 years see RE 18350-51
Cavity		CA-08A-2N see 18325-70
Seal kit for X=02,06,08	code	RG08A2010520100
	material no.	R901101437
Seal kit for X=32,10,04	code	RG08A2010530100
	material no.	R901101544
Seal kit coil and standard cap	code	RG02Z0010000100
	material no.	R930067869
Seal kit coil and protective cap only for Y=B	code	RG03Z0010000100
	material no.	R930067870
Seal kit coil and protective cap only for Y=C	code	RG04Z0010000100
	material no.	R930069171
Other technical data		See data sheet 18350-50

Electrical

Type of voltage	DC voltage
Coil type	D36
Supply voltage	See data sheet 18325-90
Voltage tolerance against ambient temperature	See characteristic curve
Power consumption	20 W
Type of protection	See data sheet 18325-90

Note: Coils must be ordered separately

Ordering code

OD.15	X	18	Y	Z	0000	*
Solenoid operated valves pilot operated poppet type 2-way normally open						Series 0/A to L unchanged performances and dimensions
monodirectional type						0 = With buna seal V = With Viton seal P = With buna seal and protective cap for override version B and C T = With Viton seal and protective cap for override version B and C
						
02						
bidirectional type						A = Standard B = Push style manual override C = Push and twist style manual override
						
06						
monodirectional type with filter						Common cavity: CA-08A-2N
						
08						
bidirectional type						
						
32						
monodirectional type						
						
10						
bidirectional type						
						
04						

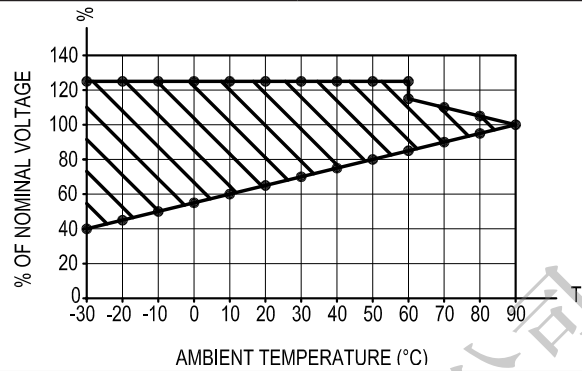
Preferred types

Type	Material number
OD150218A000000	R930059442
OD150218B000000	R930060895
OD150218BP00000	R930060113
OD150218C000000	R930060584
OD150218CP00000	R930060090
OD150618A000000	R930058435
OD150618B000000	R930058438
OD150618C000000	R930060128
OD150818A000000	R930058337
OD150818B000000	R930058340
OD150818C000000	R930060583

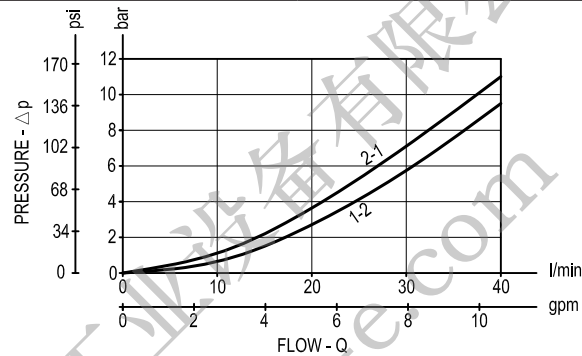
Type	Material number
OD153218A000000	R930064101
OD153218B000000	R930063422
OD153218C000000	R930065002
OD150418A000000	R930065329
OD150418B000000	R930066184
OD150418C000000	R930066185
OD150618CP00000	R930060905
OD153218CP00000	R930065328
OD151018B000000	R930066186
OD151018C000000	R930066187
OD150618AV00000	R930060900

Characteristic curves

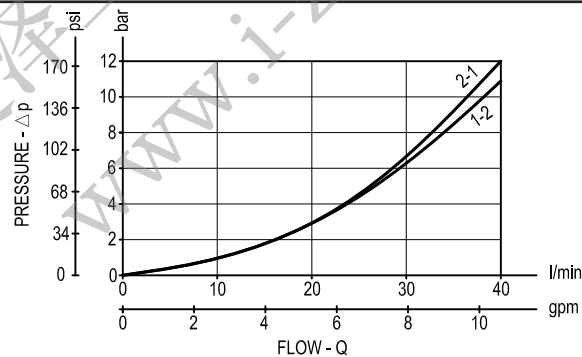
All Versions - Admissible supply voltage Vs. Ambient temperature at 100% duty cycle



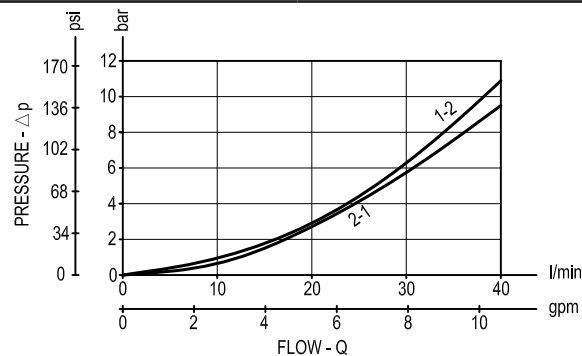
Versions 02, 06, 08



Version 32



Version 04, 10



Dimensions
Solenoid operated valves, poppet 2-way
normally open

