

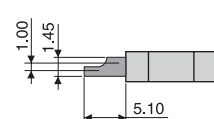
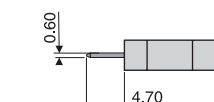
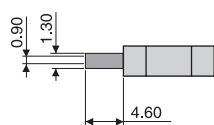
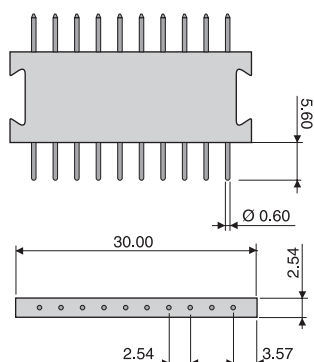
Module P

■ Width is 1 unit

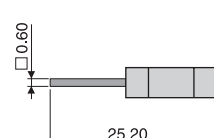
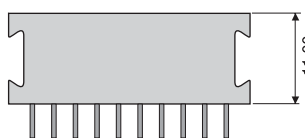
■ 10Hypertac® removable signal contacts

■ Ø 0.60mm contacts

Male



Female



Terminal Style

REF. 20

Crimp 22, 24 & 26 AWG
Wire stripped back 4.4
0061821-20ROG (pin)
0060802-20RGO (socket)

REF. 30

Straight solder dip
0060821-30ROG (pin)
0060822-30RGO (socket)

REF. 40

Solder cup up to 22 AWG
0060781-40ROG (pin)
0060782-40RGO (socket)

REF. 51

Wire wrap
0060811-51ROG (pin)
0060812-51RGO (socket)

General Specifications

Current Rating	5amps
Contact Resistance	< 6milliohms
Extraction Force	15 - 60gr.
Contact Life Cycles	>100,000
Dielectric Withstanding Voltage	1200V RMS
Insulation Resistance	> 5x 10 ⁸ Megohms
Temperature Rating	-55°C +125° C
Insulator	Glass filled nylon
Contact Material	Copper alloy
Plating reference	Ni >1mm +Au> Q 25mm on mating surface only.

Module designations

Terminal style	Crimp	Straight dip solder	Solder cup	Wire wrap
Male	PMR	PMD	PMS	PMY
Female	PFR	PFD	PFS	PFY

Accessories

Crimp tool: M22520/2.01
Positioner: SS-0060000028
Extraction tool: SD-0060000006

Notes:

- For empty block, order **PH**
- Crimp contacts will be shipped unassembled

Module H-E

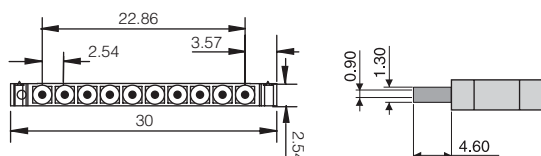
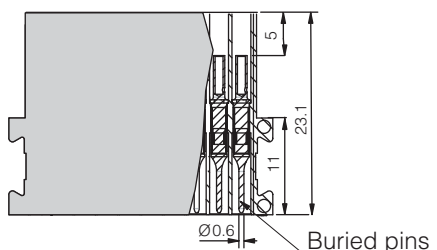
■ Width is 1 unit

■ 10Hypertac® removable signal contacts

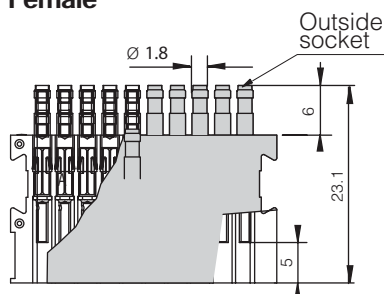
■ Ø 0.60mm contacts

Currently in development
(Consult us about availability)

Male



Female



Terminal Style

REF. 20

Crimp 22, 24 & 26 AWG
Wire stripped back 4.4
0061831-20ROG (pin)
0061832-20RGO (socket)

General Specifications

Current Rating	5amps
Contact Resistance	< 6milliohms
Extraction Force	15 - 60gr.
Contact Life Cycles	>100,000
Dielectric Withstanding Voltage	800V RMS
Insulation Resistance	> 5x 10 ⁸ Megohms
Temperature Rating	-55°C +125° C
Insulator	Glass filled nylon
Contact Material	Copper alloy
Plating reference	Ni >1mm +Au> Q 25mm on mating surface only.

Module designations

Terminal style	Crimp	Straight dip solder	Solder cup	Wire wrap
Male	H-EM	not available		
Female	H-EF	not available		

Due to the module principle:

- the female modules must be already fitted into the standard plug which will itself be equipped with other male modules
- the male modules must be already fitted into the standard receptacle which will itself be equipped with other female modules

Accessories

To be defined

Dimensions are in mm

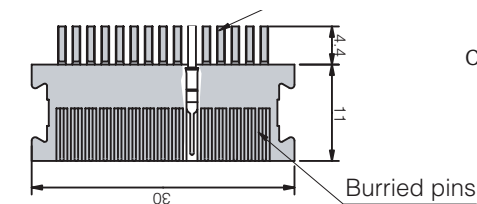
Module NH

- Width is 2 units

- 45 Hypertac® crimp contacts

- Ø 0.40mm contacts

Male

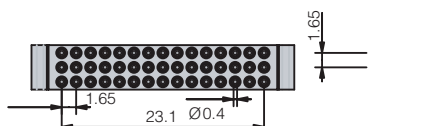


REF. 20
Crimp 26AWG Wire stripped back 3.10
YPN004-01CH (pin)
YSK004-020AH (socket)

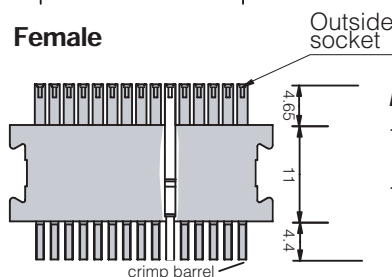
Terminal Style

General Specifications

Current Rating	1 amps
Contact Resistance	< 8 milliohms
Extraction Force	8.5 - 45 gr.
Contact Life Cycles	>100,000
Dielectric Withstanding Voltage	500V RMS
Insulation Resistance	>10 ⁹ Megohms
Temperature Rating	-55°C +125° C
Insulator	Glass filled nylon
Contact Material	Copper alloy
Plating reference	Ni >1mm +Au > Q 25mm on mating surface only.



Female



Due to the module principle:

- the female modules must be already fitted into the standard plug which will itself be equipped with other male modules
- the male modules must be already fitted into the standard receptacle which will itself be equipped with other female modules

Notes :

- For empty block, order **NH**
- Crimp contacts will be shipped unassembled

Accessories

Crimp tool:	M22520/201
Positioner:	Socket = T1974 Pin = T1973
Extraction tool:	T1970

Module T

- Width is 2 units

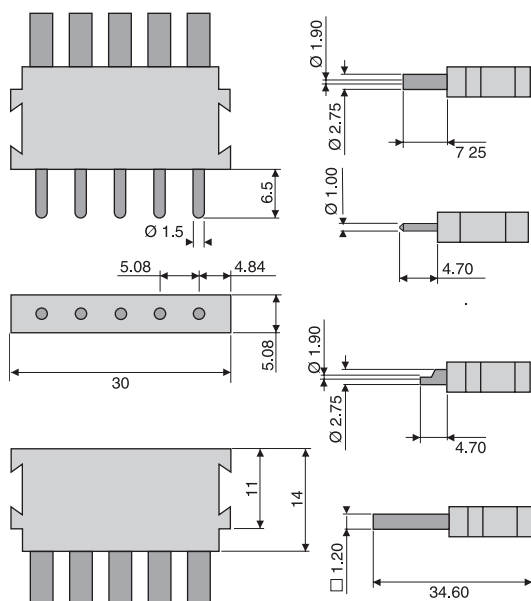
- 5 Hypertac® removable contacts

- Ø 1.50mm contacts

Terminal Style

General Specifications

Current Rating	9 amps
Contact Resistance	< 2.5 milliohms
Extraction Force	35 - 150 gr.
Contact Life Cycles	>100,000
Dielectric Withstanding Voltage	1800V RMS
Insulation Resistance	> 5x 10 ⁹ Megohms
Temperature Rating	-55°C +125° C
Insulator	Glass filled nylon
Contact Material	Copper alloy
Plating reference	Ni >1mm +Au > Q 25mm on mating surface only.



REF. 20
Crimp 14, 16, 18 & 20AWG
Wire stripped back 7.20
0150941-20ROG (pin)
0150942-20RGO (socket)

REF. 30
Straight solder dip
0151171-30ROG (pin)
0151092-30RGO (socket)

REF. 40
Solder cup up to 13AWG
0150911-40ROG (pin)
0150912-40RGO (socket)

REF. 53
Wire wrap
0150921-53ROG (pin)
0150922-53RGO (socket)

Module designations

Terminal style	Crimp	Straight dip solder	Solder cup	Wire wrap
Male	TMR	TMD	TMS	TMW
Female	TFR	TFD	TFS	TFW

Notes :

- For empty block, order **TH**
- Crimp contacts will be shipped unassembled

Dimensions are in mm

Accessories

Crimp tool:	S-085
Positioner:	S-086
Extraction tool:	SD-015000005

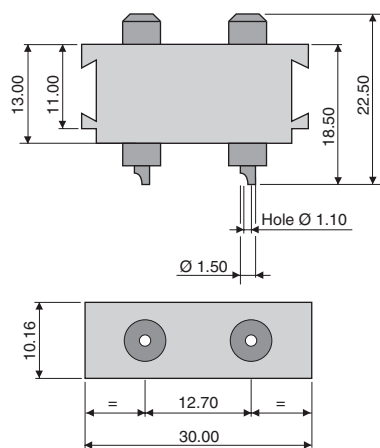
Module H

■ Width is 4 units

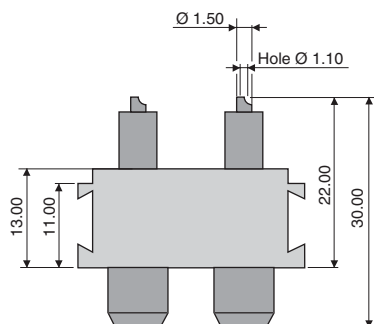
■ 2 Hypertac® high-voltage contacts

■ Ø 1.20mm contacts

Male



Female



General Specifications

Current Rating	5 amps
Contact Resistance	< 3 milliohms
Extraction Force	40 - 120 gr.
Contact Life Cycles	> 100,000
Dielectric Withstanding Voltage	6000 V RMS
Insulation Resistance	> 5 x 10 ⁸ Megohms
Temperature Rating	-55°C + 125° C
Insulator	Glass filled nylon
Contact Material	Copper alloy
Plating reference	Ni > 1mm + Au > Q 25mm on mating surface only.

Module designations

Male	HM
Female	HF

Notes :

- For empty block, order **MH**

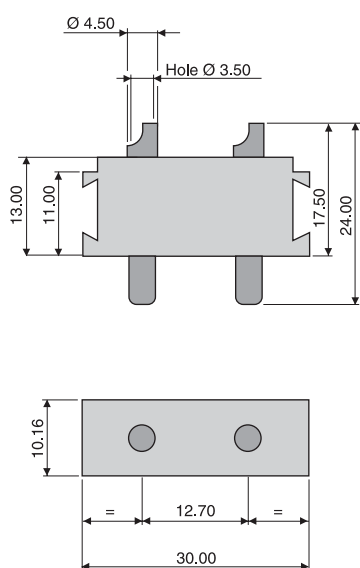
Module C

■ Width is 4 units

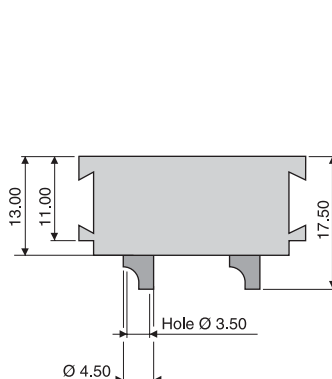
■ 2 Hypertac® Power up to 25ampers contacts

■ Ø 3.50mm contacts

Male



Female



General Specifications

Current Rating	25 amps
Contact Resistance	< 0.80 milliohms
Extraction Force	250 - 1000 gr.
Contact Life Cycles	> 100,000
Dielectric Withstanding Voltage	5000 V RMS
Insulation Resistance	> 5x10 ⁸ Megohms
Temperature Rating	-55°C + 125° C
Insulator	Glass filled nylon
Contact Material	Copper alloy
Plating reference	Ni > 1mm + Au > Q 25mm on mating surface only.

Module designations

Male	CM
Female	CF

Notes :

- For empty block, order **MH**

Dimensions are in mm

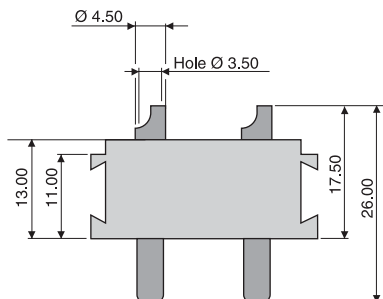
Module M

■ Width is 4 units

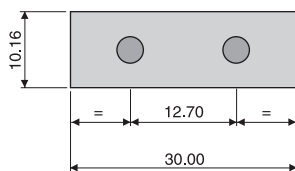
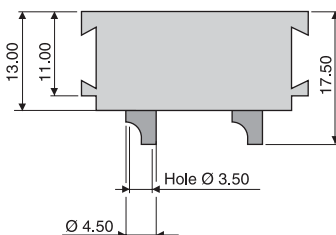
■ 2Hypertac® Power up to 50ampers contacts

■ Ø 3.50mm contacts

Male



Female



General Specifications

Current Rating	50amps
Contact Resistance	< 0.60milliohms
Extraction Force	1370 -2500gr.
Contact Life Cycles	>100,000
Dielectric Withstanding Voltage	5000V RMS
Insulation Resistance	> 5x 10 ⁸ Megohms
Temperature Rating	-55°C +125° C
Insulator	Glass filled nylon
Contact Material	Copper alloy
Plating reference	Ni >1mm +Au> 0.25mm on mating surface only.

Module designations

Male	MM
Female	MF

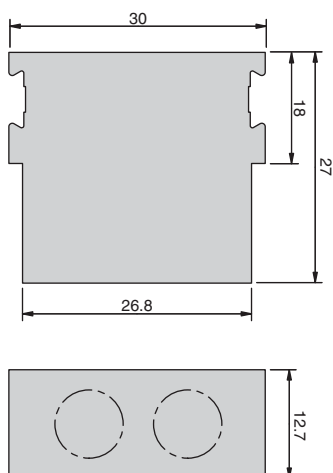
Notes :

- For empty block, order **MH**
- Crimp contacts will be shipped unassembled

Module H-U

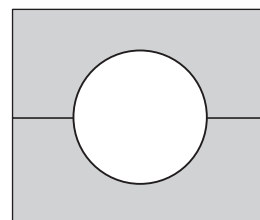
■ Width is 5 units

Currently in development
(Consult us about availability)



UNIVERSAL MODULE

Module without cavities for specific customer's applications.
Several modules could be assembled together to increase width and to make enlarged cavities following customer wishes.
Example shown on hereunder drawing.



Notes :

- Width can be reduced on request
- For contacts, contacts arrangements, cavities feasibility and P/N please consult us.

Module V-R & V-S

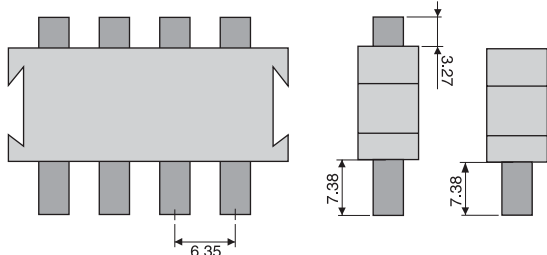
- Width is 25 units

- 4 Hypertac® contacts (on both signal & ground)

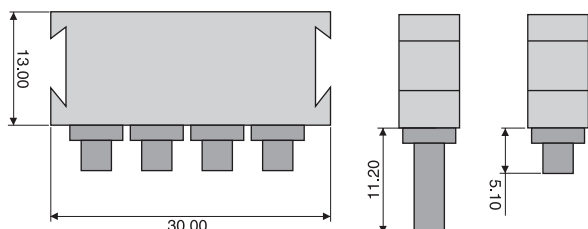
Male

Terminal Style

Ref. 20 (Crimp) Ref. 40 (Solder)



Female



General Specifications COAXTAC

Nominal impedance	50ohms
Frequency Range	DC 3GHz with RG 316 DC 18GHz with RG 405
Temperature Rating	-55°C to 125°C
Materials	Brass Beryllium Copper PTFE Fluorocarbon
Center Contacts	Gold over nickel
Housings	Over copper
Wire	Gold over nickel
Voltage Standing Wave Ratio	(DC to 3GHz) 1.20 1 Max. (based on RG 405 semi rigid cable) (3GHz to 18GHz) 1.50 1 Max.
RF Transmission Loss	0.50dB Max.@18GHz
Insulation Resistance	5000megohms min.
Dielectric Withstanding Voltage	500VRMS
Contact Resistance inner Contact	8miliohms Max.
Contact Resistance outer Contact	2miliohms Max.
Extraction Force	42.5 - 170g Max., 85g average
Contact life cycles	> 25,000

Module	Contact	Cable
VMR	YC X0315-004H	RG 316
VMRDB	YC X0315-018H	RG 316DB
VFR	YC X0315-002AH	RG 316
VFRDB	YC X0315-019AH	RG 316DB
VMS	YC X0315-003H	RG 405 or T-Flex 405
VFS	YC X0315-001AH	

Accessories

Inner contact	Outer contact
Crimp tool: M22520/2.01	Crimp tool: M22520/10.01
Positioner: T1957	Die Set: T1958 (RG 316) T2019 (RG 316DB)
Extraction tool: T1982	

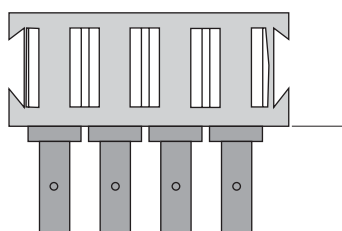
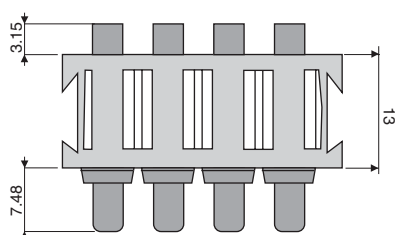
Cabling notice

crimp (R) & (R1)	Solder (S)	
Cable	RG 316& RG 316DB	RG 405 T-Flex 405
Socket	S-50302	S 50301 S 50307
Pin:	S-50304	S 50303 S 50308

Module V-P

- Width is 25 units

- 4 Hypertac® contacts (on both signal & ground)



General Specifications

Current Rating	25 amps
Contact Resistance	< 1.5 milliohms
Extraction Force	85 - 482 gr.
Contact Life Cycles	>100,000
Dielectric Withstanding Voltage	500V RMS
Insulation Resistance	>10 ⁹ Megohms @ 500VDC
Temperature Rating	-55°C +105°C
Insulator	Nylon
Contact Material	Copper alloy
Plating (on mating surface only.)	Ni >1mm +Au > 0.25mm

Contact PN

Module	Contact
VMS	YC X025-024H
VFS	YC X025-031AH

Accessories

Crimp tool:	M309
Positioner:	T1981
Extraction tool:	T1982

Dimensions are in mm