

Directional spool type, direct acting,
external pilot external vent
Common cavity, Size 10

VDSJ-10A

04.77.19 - X - 85 - Z

RE 18320-87

Edition: 03.2016

Replaces: 06.2010



Description

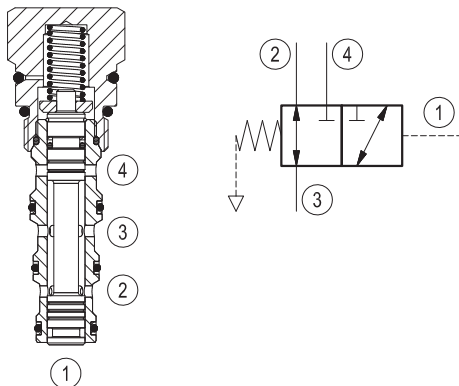
Flow is allowed bi-directionally between 2 and 3, and blocked at 4 until pressure at 1 rises to overcome the spring bias against the spool. When this bias pressure is surpassed, the spool shifts, allowing bi-directional flow between 3 and 4 while blocking 2. The spring chamber is sealed and vented to atmosphere, allowing consistent shifting with only spring bias pressure independent of conditions at 2 or 3.

Technical data

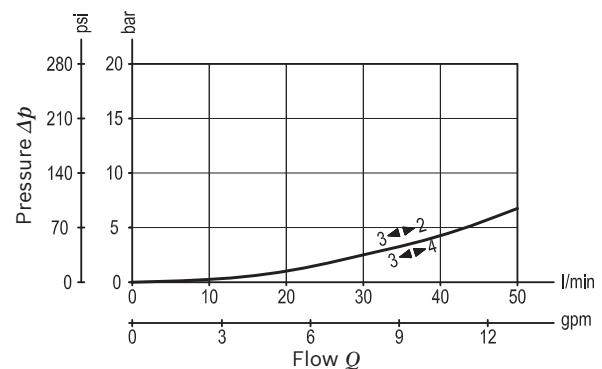
Max. operating pressure	350 bar (5000 psi)
Max. flow	50 l/min. (13 gpm)
Max. internal leakage ¹⁾	50 cm ³ /min. (3 cu.in./min.)
Pilot displacement volume	0.28 cm ³ (0.02 cu.in.)
Fluid temperature range	-30 to 100 °C (-22 to 212 °F)
Installation torque	41 - 47 Nm (30 - 35 ft-lbs)
Weight	0.2 kg (0.44 lbs)
Cavity	CA-10A-4N (see data sheet 18325-70)
Lines bodies and standard assemblies	Please refer to section "Hydraulic integrated circuit" or consult factory
Seal kit ²⁾	Code: RG10A4010530100 material no: R901111373
Fluids	Mineral-based or synthetics with lubricating properties at viscosities of 10 to 500 mm ² /s (cSt)
Recommended degree of fluid contamination	Nominal value max. 10µm (NAS 8) / ISO 4406 19/17/14
Installation position	No restrictions
Other Technical Data	See data sheet 18350-50

¹⁾ Measured at 200 bar (2900 psi)

²⁾ Only external seals for 10 valves



Characteristic curve



Ordering code

04.77.19	X	85	Z	00	*
----------	---	----	---	----	---

Series 0/A to L
unchanged performances and dimensions

Version and options standard

Directional spool type, direct acting
external pilot external vent

O-Ring on pilot piston

00 No O-Ring

10 With O-Ring

85 Common cavity, Size 10

SPRINGS	
Std. setting bar (psi)	
05	5.5 (80) ± 20%
11	11.5 (167) ± 10%

Preferred types

Type	Material number
047719008505000	R930000952
047719008511000	R930000953
047719108505000	R930001328
047719108511000	R930001329

Type	Material number

Dimensions

