

Solenoid operated valves direct acting poppet type
2-way normally open
Common cavity, Size 08

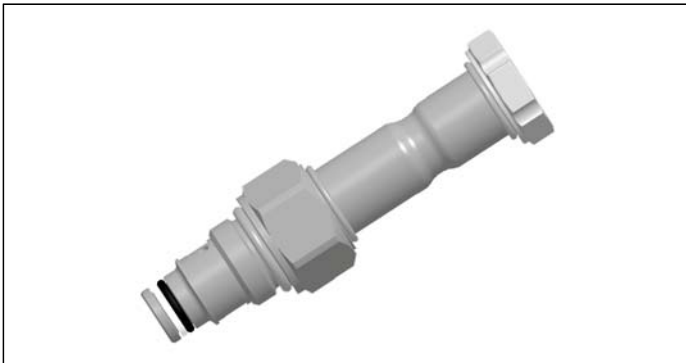
VED-16-08A-NA

OD.11 - X - 18 - Y - Z - 00

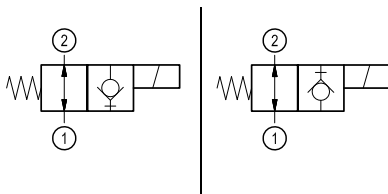
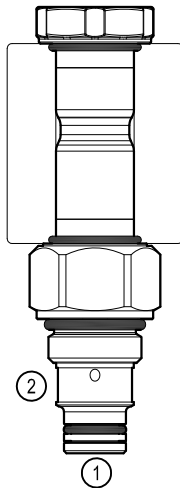
RE 18324-17

Edition: 03.2020

Replaces: 06.2019



PATENT PENDING



Technical data

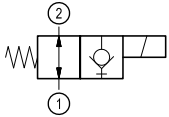
General		
Weight		0.20 kg (0.44 lbs)
Installation orientation		Unrestricted
Storage ambient temperature range		-40 to 100 °C (-40 to 212 °F)
Operating ambient temperature range		-30 to 90 °C (-22 to 194 °F)
Salt spray test to DIN EN ISO 9227:2017-07		500h
Hydraulic		
Max. operating pressure		350 bar (5000 psi)
Rated flow		1.5 l/min (0.4 gpm)
Max. internal leakage:		20 drops/min.
Switching time		Closing ≤ 100 ms
		Opening ≤ 50 ms
Fluid temperature range		-20 to 80 °C (-4 to 176 °F)
Fluids: Mineral-based or synthetics with lubricating properties at viscosities of 20 to 380 mm²/s (cSt)		
Installation torque		39 - 51 Nm (29 - 38 ft-lbs)
Recommended degree of fluid contamination		Nominal value max. 10 µm (NAS 8) ISO 4406 19/17/14
MTTFD		150 years see RE 18350-51
Common cavity		CA-08A-2N see 18325-70
Seal kit for X=02,04	code	RG08A2010520100
	material no.	R901101437
Seal kit coil and standard cap	code	RG02Z0010000100
	material no.	R930067869
Seal kit coil and protective cap only for Y=B	code	RG03Z0010000100
	material no.	R930067870
Seal kit coil and protective cap only for Y=C	code	RG04Z0010000100
	material no.	R930069171
Other technical data		See data sheet 18350-50
Electrical		
Type of voltage		DC voltage
Coil type		D36
Supply voltage		See data sheet 18325-90
Voltage tolerance against ambient temperature		See characteristic curve
Power consumption		20 W
Type of protection		See data sheet 18325-90
Note: Coils must be ordered separately		

Ordering code

OD.11	X	18	Y	Z	0000	*
-------	---	----	---	---	------	---

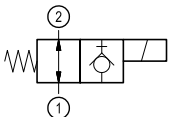
Solenoid operated valves
direct acting poppet type
2-way normally open

bidirectional type



02

bidirectional type



04

Series 0/A to L
unchanged performances and dimensions

0 = With buna seal
V = With Viton seal
P = With buna seal and protective cap for override version **B** and **C**
T = With Viton seal and protective cap for override version **B** and **C**

A = Standard
B = Push style manual override
C = Push and twist style manual override

Common cavity: CA-08A-2N

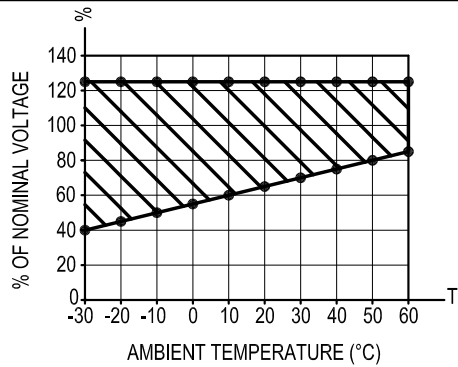
Preferred types

Type	Material number
OD110218A000000	R930066943
OD110218B000000	R930065612
OD110218C000000	R930066948
OD110418A000000	R930066947
OD110418B000000	R930066950
OD110418C000000	R930066946

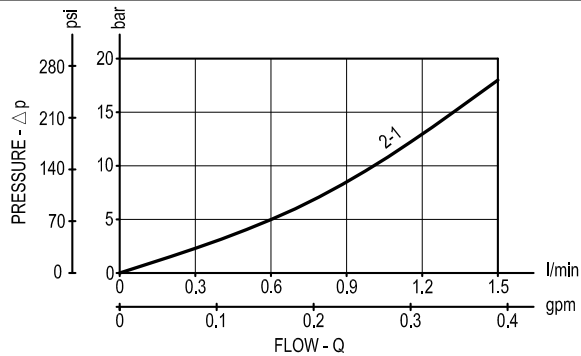
Type	Material number

Characteristic curves

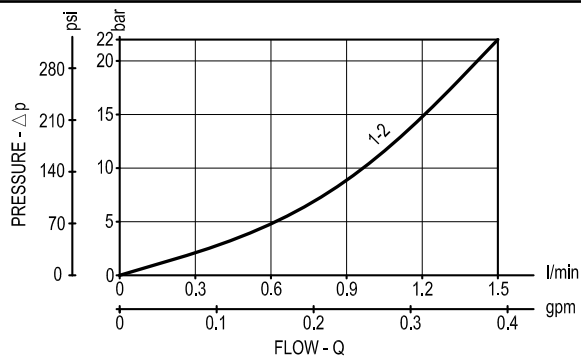
All Versions - Admissible supply voltage Vs. Ambient temperature at 100% duty cycle



Versions 02



Versions 04



Dimensions

**Solenoid operated valves, poppet 2-way
normally closed**

