

# Counterbalance, vented guided poppet type Common cavity, Size 12

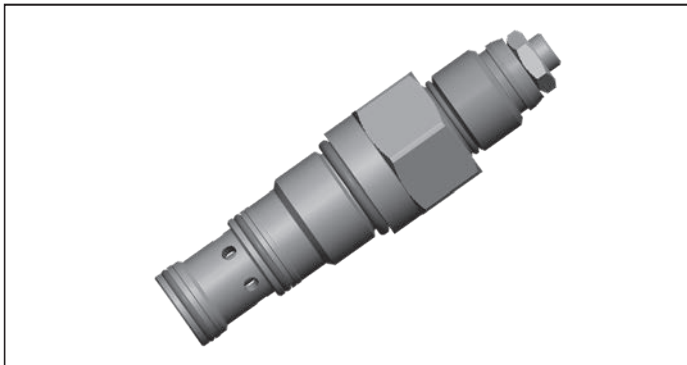
VBST-12A

04.59.26 - X - 57 - Z

**RE 18320-13**

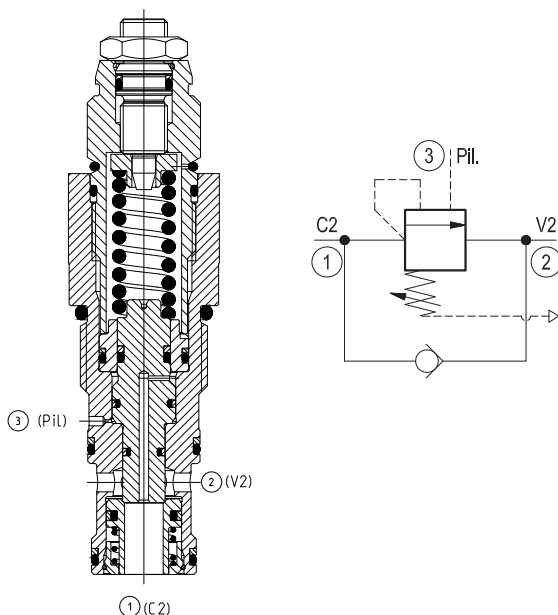
Edition: 07.2023

Replaces: 03.2016



## Description

When pressure at 2 rises above the spring bias pressure, the check seat is pushed away from the piston and flow is allowed from 2 to 1. When load pressure at 1 rises above the pressure setting, the direct-acting, relief function is activated and flow is relieved from 1 to 2. With pilot pressure at 3, the pressure setting is reduced in proportion to the stated ratio of the valve, until fully open with free-flow from 1 to 2. The spring chamber is vented to atmosphere allowing operation of all functions independent of back-pressure at 2. Valve design prevents spring going solid and complete unscrewing during adjusting.



## Technical data

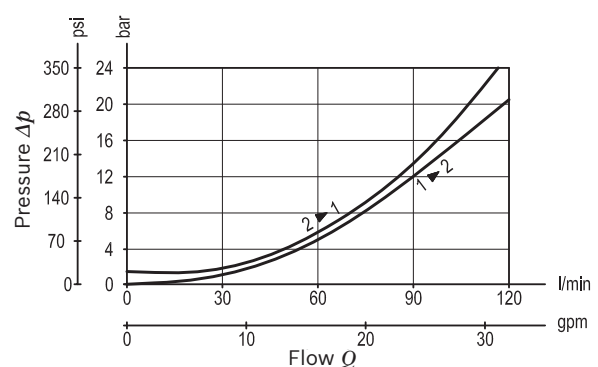
Max. operating pressure	350 bar (5000 psi)
Max. flow	120 l/min (32 gpm)
Max. internal leakage <sup>1)</sup>	15 drops/min.
Fluid temperature range	-30 to 100 °C (-22 to 212 °F)
Installation torque	81 - 95 Nm (60 - 70 ft-lbs)
Weight	0.39 kg (0.86 lbs)
MTTFD	150 years see RE 18350-51
Cavity	CA-12A-3C (see data sheet 18325-70)
Adjustment	according to ISO 4413 with sealed adjustment screw to prevent oil leakage during adjustment
Salt spray test	500h according to DIN EN ISO 9227:2017-07
Lines bodies and standard assemblies	Please refer to section "Hydraulic integrated circuit" or consult factory
Seal kit <sup>2)</sup>	Code: RG12A9010520100 material no: R901111379
Fluids	Mineral-based or synthetics with lubricating properties at viscosities of 10 to 500 mm <sup>2</sup> /s (cSt)
Recommended degree of fluid contamination	Nominal value max. 10µm (NAS 8) / ISO 4406 19/17/14
Installation position	No restrictions
Other Technical Data	See data sheet 18350-50

Pressure setting: at least 1.3 times the load induced pressure and maximum 1.5 times catalogue max nominal setting.

1) At 70% of pressure setting

2) Only external seals for 10 valves

## Characteristic curve



Ordering code

04.59.26	X	57	Z	*	*
----------	---	----	---	---	---

Counterbalance, vented guided  
poppet type

Pilot ratio

03 4:1

57 Common cavity, Size 12

Series M to Z  
unchanged performances and dimensions

00 Standard (Buna)  
V0 Viton (FKM)

SPRINGS			
	Adj. press. range bar (psi)	Pressure increase bar/turn (psi/turn)	Std. setting bar (psi) Q=5 l/min
20	70-210 (1000-3000)	50 (725)	200 (2900)
35	140-350 (2000-5000)	159 (2306)	350 (5000)

Note: Special settings available with optional tamperproof cap.  
Contact factory authorized representative for ordering code.

Preferred types

Type	Material number
04592603572000M	R930081332
04592603573500M	R930081333

Type	Material number

Dimensions

