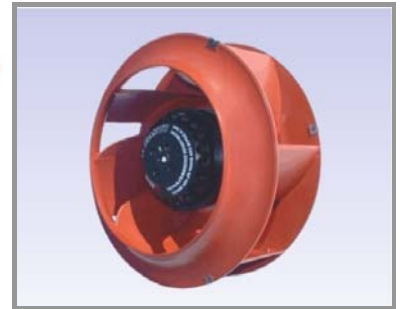
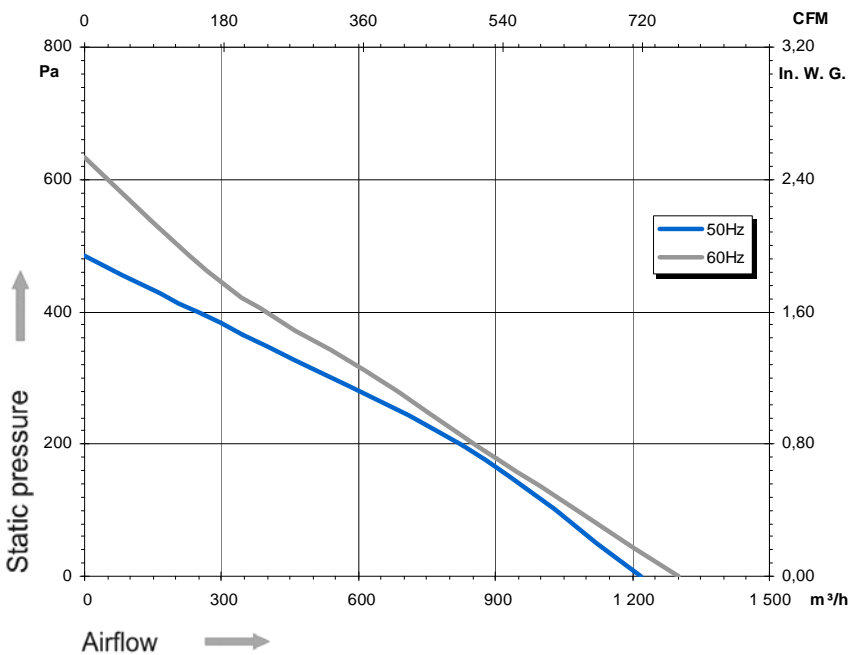
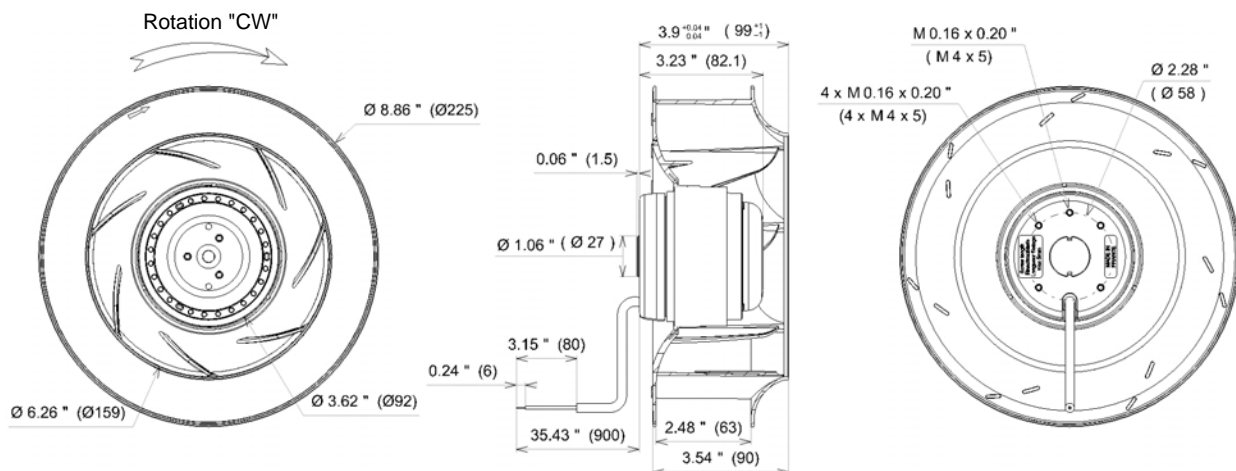


## 2RREu35 225x63R P/N C25-A4

| Voltage | Frequency | Input power | Current | Capacitor | Airflow | Speed rotation | Noise level | Rotation direction | Operating temperature | ErP 2013 | ErP 2015 |
|---------|-----------|-------------|---------|-----------|---------|----------------|-------------|--------------------|-----------------------|----------|----------|
| V       | Hz        | W           | A       | μF        | m³/h    | RPM            | dBA         |                    | Min / Max             |          |          |
| 230     | 50        | 143         | 0,63    | 4,0       | 1 220   | 2 505          | 68          | R                  | -40°C / +70°C         | NOK      | NOK      |
| 230     | 60        | 197         | 0,86    | 4,0       | 1 300   | 2 640          | 70          | R                  | -40°C / +70°C         |          |          |
| 230     | 50        |             |         |           | 718 CFM |                |             |                    | -40°F / +158°F        |          |          |
| 230     | 50        |             |         |           | 765 CFM |                |             |                    | -40°F / +158°F        |          |          |



dBa : free let out



- Weight : 2,4 Kg

- Ball bearing
- Class F, thermally protected
- IP44 protection depending on installation and position as per EN60034-5
- G2.5 balancing
- Rotor : black paint
- PA 6/6 UL 94 V-0 plastic impeller
- UL approved motor



UL2111 (XEWR2,8)  
N° File E135223  
2RS935



| Capacitor for 50Hz | Capacitor for 60Hz | Inlet cone |
|--------------------|--------------------|------------|
| 19220              | 19220              | 16214      |

