

Pilot operated check, dual

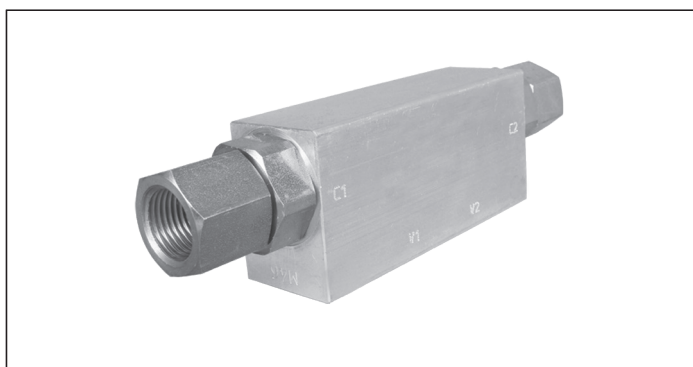
VSO-DE-L

05.53.03 - X - 02 - Z

RE 18307-22

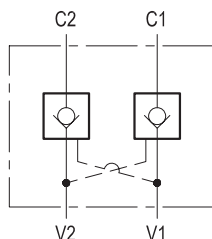
Edition: 03.2016

Replaces: 04.2010



Description

Flow is allowed to pass in one direction (V1 to C1 or V2 to C2), then the valve remains closed (checked) in both reverse directions (C1 to V1 or C2 to V2) in order to hold and lock in position the cylinder or other actuators; reverse flow is possible only when sufficient pilot pressure is applied at V2 or V1, which act as cross connected pilot ports, and the pilot piston lifts the poppet from its seat overcoming cylinder port pressure.

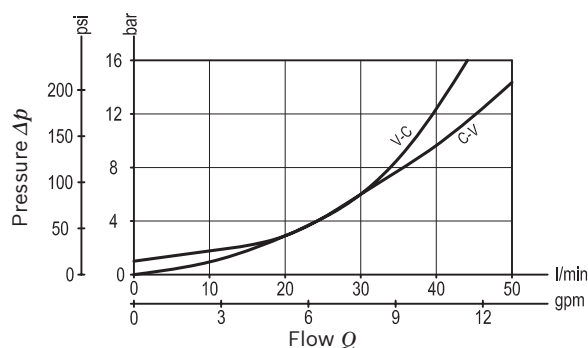


Technical data

Max operating pressure port C2-C1	350 bar (5000 psi)
Max operating pressure port V2-V1	210 bar (3000 psi)
Max. flow	50 l/min. (13 gpm)
Pilot ratio	3.2 : 1
Weight	1.15 kg (2.5 lbs)
Manifold material	Aluminium
Note: aluminium bodies are often strong enough for operating pressures exceeding 210 bar (3000 psi), depending from the fatigue life expected in the specific application. If in doubt, consult our Service Network.	
Fluid	Mineral oil (HL, HLP) according DIN 51524
Fluid temperature range	-30 °C to 100 (-22 to 212 °F)
Viscosity range	10 to 500 mm ² /s (cSt)
Recommended degree of fluid contamination	Class 19/17/14 according to ISO 4406
Other technical data	see data sheet 18350-50

Note: for applications outside these parameters, please consult us.

Characteristic curve



Ordering code

05.53.03				X	02	Z
Pilot operated check, dual				00		
O-Ring on pilot piston						
00 No O-Ring						
Port sizes				SPRINGS		
02				Cracking pressure bar (psi)		
V1 - V2				8 (116)		
C1 - C2						
G 3/8						

Preferred types

Type	Material number	Type	Material number
05530300020000A	R930002419		

Dimensions

