

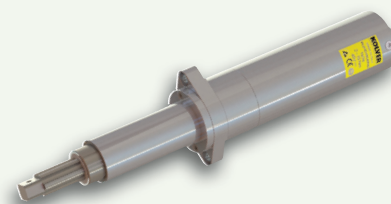
## CA Screwdrivers

The CA screwdrivers are designed for automated and fixtured applications. Special wiring and dedicated controllers are equipped with electric signals and contacts for immediate and easy interface. The ideal alternative to pneumatic drivers, they feature a long life maintenance free electric motor with a unique electronic torque control system for high accuracy throughout a wide torque range (up to 442 in/lbs); an aluminium body, for easy and quick clamp, supplied with 8.2 ft cable.

The PLUTO..CA/FN2 Series incorporates the PLUTO DC-controlled electric screwdriver design, supplied in an inline aluminium housing for flange mounting applications. The DC motor and solid state controls of the PLUTO are ideal for automated high volume/high duty applications. Flange and telescopic spindle available together or separately. 3D drawings available on [www.kolverusa.com](http://www.kolverusa.com)



TELESCOPIC SPINDLE



PLUTO..CA/FN2

Model	Code	Torque in/lbs	RPM min-max	Dimensions in	Weight lb	Output	Control unit
NATO15CA	163015	0.09-1.3	350-700	5.4x0.8	0.3	Half moon 4mm	EDU2AE/TOP/NT
NATO50CA	163050	0.4-4.4	200-700	5.9x1	0.4	Hex 1/4"	EDU2AE/TOP/NT
MITO15CA	170016	1.8-13.3	450-850	7.6x1.3	0.8	Hex 1/4"	EDU2AE Series
MITO15CA/FN	170016/FN	1.8-13.3	450-850	10.7x1.3	1.0	Hex 1/4"	EDU2AE Series
PLUTO3CA	130303	4.4-26.6	370-1300	6.6x1.6	1.1	Hex 1/4"	EDU2AE Series
PLUTO3CA/FN2	130303/FN2	4.4-26.6	370-1300	10.6x1.6	1.5	Sq 3/8"	EDU2AE Series
PLUTO6CA	133206	7.5-53.1	200-850	6.6x1.6	1.1	Hex 1/4"	EDU2AE Series
PLUTO6CA/FN2	133206/FN2	7.5-53.1	200-850	10.6x1.6	1.5	Sq 3/8"	EDU2AE Series
PLUTO10CA/N	133211/N	13.3-88.5	110-600	6.6x1.6	1.1	Hex 1/4"	EDU2AE Series
PLUTO10CA/FN2	133211/FN2	13.3-88.5	110-600	10.6x1.6	1.5	Sq 3/8"	EDU2AE Series
PLUTO15CA/N	133216/N	17.7-132.8	60-320	6.6x1.6	1.1	Hex 1/4"	EDU2AE Series
PLUTO15CA/FN2	133216/FN2	17.7-132.8	60-320	10.6x1.6	1.5	Sq 3/8"	EDU2AE Series
PLUTO20CA	133221	26.6-177	50-200	9.1x1.9	2.4	Sq 3/8"	EDU2AE Series
PLUTO20CA/FN	133221/FN	26.6-177	50-200	12.7x1.9	3.0	Sq 3/8"	EDU2AE Series
PLUTO35CA	133236	26.6-309.8	40-140	9.7x2.2	3.3	Sq 3/8"	EDU2AE Series
PLUTO35CA/FN	133236/FN	26.6-309.8	40-140	13.3x2.2	4.3	Sq 3/8"	EDU2AE Series
PLUTO50CA	133250	44.3-442.5	20-90	9.9x2.2	3.3	Sq 1/2"	EDU2AE Series
PLUTO50CA/FN	133250/FN	44.3-442.5	20-90	13.8x2.2	4.3	Sq 1/2"	EDU2AE Series
KBL04FR/CA	190004/CA	0.4-3.5	650-1000	10.1x1.6	1.3	Hex 1/4"	EDU1BL/SG
KBL04FR/CA/FN	190004/CA/FN	0.4-3.5	650-1000	13x1.6	1.4	Hex 1/4"	EDU1BL/SG
KBL15FR/CA	190015/CA	3.5-13.3	650-1000	10.1x1.6	1.3	Hex 1/4"	EDU1BL/SG
KBL15FR/CA/FN	190015/CA/FN	3.5-13.3	650-1000	13x1.6	1.4	Hex 1/4"	EDU1BL/SG
KBL30FR/CA	190030/CA	6.2-26.6	650-1000	10.4x1.6	1.7	Hex 1/4"	EDU1BL/SG
KBL30FR/CA/FN	190030/CA/FN	6.2-26.6	650-1000	13.3x1.6	1.8	Hex 1/4"	EDU1BL/SG
KBL40FR/CA	190040/CA	8-35.4	450-750	10.4x1.6	1.7	Hex 1/4"	EDU1BL/SG
KBL40CA/FN	190040/CA/FN	8-35.4	450-750	13.3x1.6	1.8	Hex 1/4"	EDU1BL/SG

All CA are also available with torque and angle excluding the KBL series. Drawings and manuals available on [www.kolverusa.com](http://www.kolverusa.com)

## CA Control Units

All Kolver Current Controlled screwdrivers work in combination with a control unit acting as an AC to DC transformer, and torque controller. Our exclusively designed circuitry monitors the power supply, and cuts power to the driver motor once the pre-set torque has been reached.

For the Pluto CA Series, the EDU 2AE Series controllers give the precise torque control for all automated operations at a fraction of the cost of transducer tools. The whole EDU2AE Series is now totally renovated and fully upgraded with our state-of-the-art advanced software for torque controlling. The main features of the new switching control units are:

- Universal usage: All units are equipped with a high power switching transformer with 90-260 V AC power supply: 100% more power and 40% weight reduction.
- New software: EDU2AE & EDU2AE/HPro have a 2.00 version, all TOP units a 5.00 version installed.
- More accurate than ever: The combination of the switching transformer and new software allows MITO & PLUTO screwdrivers to reach a much higher accuracy, better than +/- 5% all over the torque range.
- Better endurance in environment with high noise and interference level: All units comply to norms 61000-6-2 and 61000-6-3.
- Improved EMC features: All units are equipped with a solid steel base and back panel.
- New Features: Users are able to select a fast approach speed and a final tightening speed to adapt to any type of application. It is also possible to select an endless time of clockwise rotation for any application requiring no max time option.
- Multilanguage: English, Italian, German, French, Portuguese, Spanish.

The EDU1BL/SG control unit is designed to work with our KBL Brushless drivers. These KBL drivers feature a maintenance free brushless motor, and the EDU controllers feature state-of-the-art electronics with zero wearing components.

Controllers come standard with:

- Slow start adjustment.
- RPM adjustment (60% to 100% of rated speed).
- Visual indicators (red-green) for power and torque.
- Input: Start and Reverse contacts.
- Output: 24 V DC for torque reached and lever signals.

Kolver also features Multi-Spindle units, including Pluto or Brushless controllers, CA spindles, all custom fixturing, and master PLC.

We invite you to contact us for further information.



**EDU2AE**



**EDU2AE/TOP/TA**



**EDU2AE/TOP/E**



**EDU1BL/SG**



**MULTI SPINDLE**

Model	Code	Features	Dimension in	Weight lb
EDU2AE	032000	Programmable with user interface screens	7.7x6.7x4.3	5.3
EDU2AE/FR	032000/FR	For PLUTO..FR series. Like EDU2AE + Run time, Integrated screw counter, Additional signals, Serial Port, Optional screwdriver connector on back panel	7.7x6.7x4.3	5.3
EDU2AE/HPro	032000/HPRO	Like EDU2AE + Torque value, Run Time, Additional signals, Serial Port, serial print, integrated screw counter, Optional screwdriver connector on back panel	7.7x6.7x4.3	5.3
EDU2AE/TOP	032000/TOP	8 different programs - selection by barcode, socket tray, switchbox	7.5x8.1x4.7	5.5
EDU2AE/TOP/E	032000/TOP/E	Like EDU2AE/TOP + remote programming via USB & PC (with EDU EXPAND software)	7.5x8.1x4.7	5.5
EDU2AE/TOP/TA	032000/TOP/TA	Programmable Torque & Angle (8 P-Sets) with user interface screens	7.5x8.1x4.7	5.5
EDU1BL/SG	003000/SG	Output signals: torque, error and lever; Input signals: start, stop and reverse. For KBL/S and KBL/CA.	5.4x4.6x2.6	1.3