

Description and Application

KMC MEP-425 series direct-coupled, spring-return actuators are designed to control small- and medium-sized dampers requiring fail-safe operation.

The MEP-425 Series actuators mount to 1/4" to 3/4" diameter shafts or 1/4" to 1/2" square shafts. The actuators produce 62 in-lb. of torque, running and spring return minimum, over a maximum 95° rotation.

Two-position, tri-state, and 0 to 10 VDC models are available with pre-cabled wiring and integrated conduit adapter.

Features

- ◆ Spring-return fail safe
- ◆ Two-position, tri-state, and 0-to-10 VDC models
- ◆ Direct mounting to common shaft sizes
- ◆ Integrated conduit adapter
- ◆ Pre-cabled three-foot wiring

Models

Model	Control Signal	Power Supply	Feedback	Auxiliary Switches
MEP-425100	2 Position, 24 VAC/ VDC	24 VAC/ VDC	None	None
MEP-425300	2 Position, 120 VAC	120 VAC		2 SPDT
MEP-425502	Tri-State, 24 VAC/ VDC	24 VAC/ VDC		None
MEP-425600	0–10 VDC		0–10 VDC	2 SPDT
MEP-425602				

Accessories

HCO-1151 12-7/16 x 7 x 3-1/4" weather enclosure



Specifications

Supply Voltage

24 V Units	VAC ±20% (50/60 Hz) VDC ±15%
120 V Units	VAC ±10% (50/60 Hz)

Current Input

24 V Units	5 VA (AC) or 3.5 W (DC)
120 V Units	7 VA (AC) or 5 W (DC)

Control Input

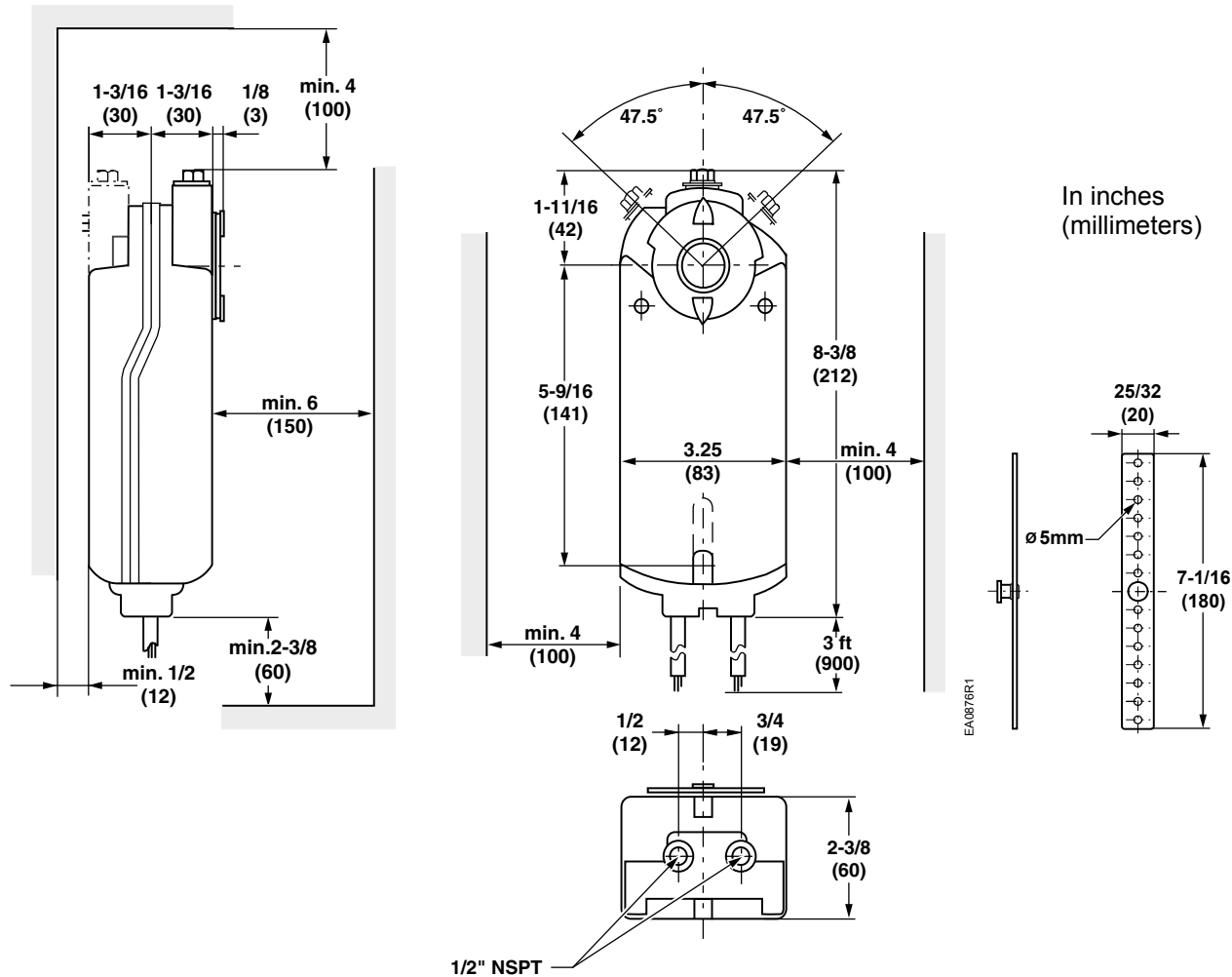
2-Position	
24 VAC/VDC	MEP-425100
120 VAC	MEP-425300
Tri-state, 24 VAC/VDC	MEP-425502
0 to 10 VDC	MEP-425600 MEP-425602

Feedback (0-10 VDC) MEP-425600, MEP-425602

Auxiliary Switches MEP-425502, MEP-425602

Type	Dual SPDT
Rating	6 A resistive, 2 A inductive @ 24 to 230 VAC
Switching Range	From 5 to 90° in 5° increments

Dimensions



Specifications (Cont.)

Torque	62 in-lb. (7 N•m)	Weight	2.9 pounds (1.3 kg)
Angular Rotation	90° nominal (95° max.)	Dimensions	8-3/8 H x 3-1/4 W x 2-2/3" D (212 x 83 x 68 mm)
Motor Timing	90 seconds	Temperature Limits	
Spring Return Time	15 seconds typical (60 seconds max. @ -25° F)	Operating	-25 to 130° F (-32 to 55° C)
Noise Level	< 45 dBA	Shipping	-40 to 158° F (-40 to 70° C)
Mounting	Direct to 1/4" to 3/4" (6.4 to 20.5 mm) round, or 1/4" to 1/2" (6.4 to 13 mm) square secured by self-centering shaft coupling and non-rotational mounting bracket (supplied with unit)—minimum damper shaft length is 3/4" (20 mm)	Humidity	95% RH non-condensing
Connections	Pre-cabled, 18 AWG, 3-foot (0.9 m) length	Regulatory	CE compliant, cUL (C22.2 No. 24-93) listed, UL 60730 (replaces UL873)
Enclosure	Die cast aluminum alloy, NEMA 1 IP54 per EN60529		