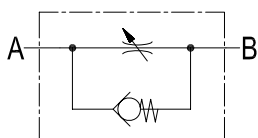
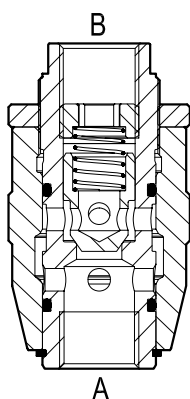


Flow control valves

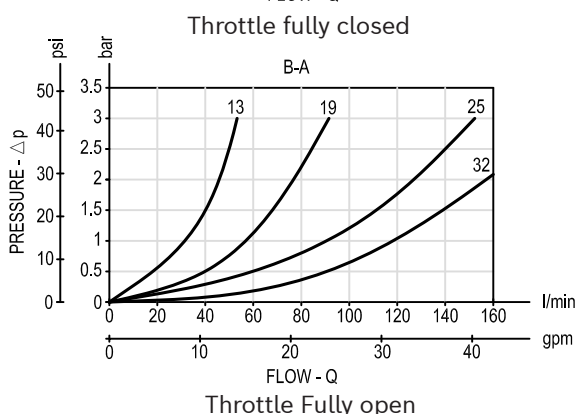
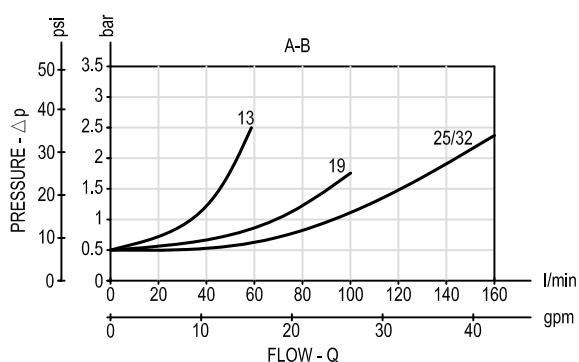
Adjustable barrel type restrictors with poppet type reverse flow check

Series

FO



Performance



Description

This line mounted restrictor throttles and limits the flow from B to A; it has an adjustable built-in restriction which can be tuned by rotating the external pinecone-type knurled sleeve from fully closed to fully open. Flow will increase by rotating the sleeve toward (+) direction. Once the desired adjustment is achieved, the sleeve can be locked by tightening the knurled ring nut (H) in order to prevent inadvertent changes or motion due to line vibrations. The maximum adjustment stroke is identified as K and, for different valve sizes, is shown by the specific table. This valve is a variable adjustable restriction, non-pressure-compensated: the actual flow through the valve will be determined by the pressure differential available between inlet B and outlet A, and also by the oil viscosity. Unrestricted reverse flow from A to B is permitted through a poppet type check valve, with cracking pressure 0,5 bar (7 psi) regardless of valve adjustment. The valve is available in different sizes for different flow ranges, as specified by the tables of the Technical data and Dimensions. Minor leakage "B-A" can be expected with valve fully closed.

Free reverse flow "A-B" is always allowed through the incorporated poppet check valve with 0.5 bar cracking pressure.

With valve fully closed, max admitted pressure: 250 bar.

Technical data

Code	Pressure P max bar (psi)	Flow Q max l/min (gpm)	Weight kg (lbs)
FO 13	350 (5000)	80 (21)	0.74 (1.63)
FO 19	250 (3600)	100 (26)	1.18 (2.60)
FO 25	250 (3600)	160 (42)	2.9 (6.4)
FO 32	250 (3600)	160 (42)	3.0 (6.6)

Steel body, zinc plated

