

Directional valves ► Manually operated

5/2-directional valve, Series 563 131

► Qn= 1100 l/min ► pipe connection ► compressed air connection output: G 1/4



5631-311

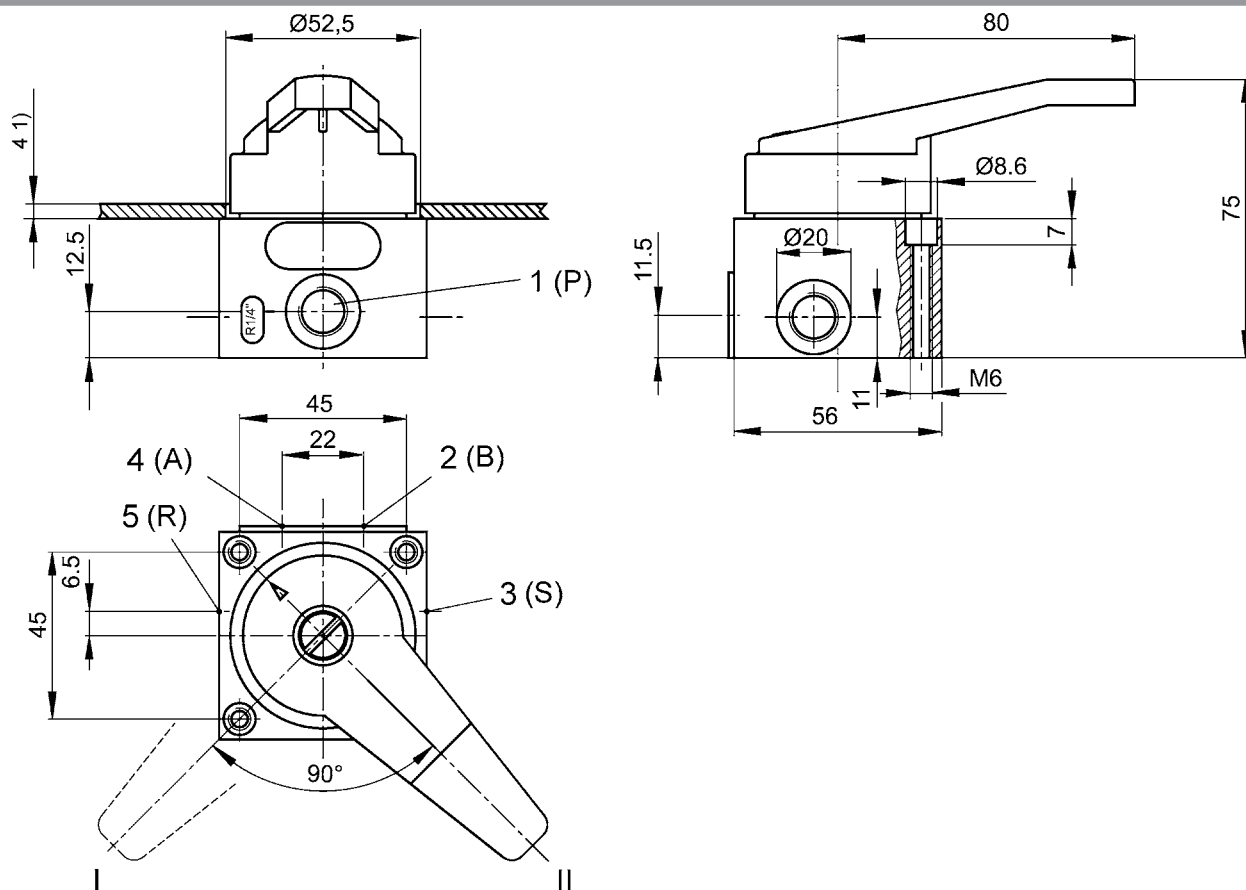
| | |
|-------------------------------|--------------------------------|
| Version | Poppet valve not lockable |
| Actuating element | Hand lever, with detent |
| Sealing principle | Soft sealing |
| Working pressure min./max. | 0 bar / 10 bar |
| Ambient temperature min./max. | -25 °C / +80 °C |
| Medium temperature min./max. | -25 °C / +80 °C |
| Medium | Compressed air |
| Max. particle size | 50 µm |
| Oil content of compressed air | 0 mg/m³ - 5 mg/m³ |
| Materials: | |
| Housing | Die cast zinc |
| Seals | Acrylonitrile Butadiene Rubber |
| Actuating element | Polyarylamide |

| | Compressed air connection | | | Qn | Weight | Part No. |
|---|---------------------------|--------|---------|---------|--------|-------------------|
| | Input | Output | Exhaust | | | |
| | | | | [l/min] | [kg] | |
| | G 1/4 | G 1/4 | G 1/4 | 1100 | 0.71 | 5631310100 |
| Nominal flow Qn at 6 bar and Δp = 1 bar | | | | | | |

5/2-directional valve, Series 563 131

► Qn= 1100 l/min ► pipe connection ► compressed air connection output: G 1/4

Dimensions



1) Max.

Pos. I: port 1 -> port 4; port 2 -> port 3

pos. II: port 1 -> port 2; port 4 -> port 5

D563_131

Directional valves ► Manually operated

5/3-directional valve, Series 563 131

► Qn= 1100 l/min ► pipe connection ► compressed air connection output: G 1/4



5631-311

| | |
|-------------------------------|--------------------------------|
| Version | Poppet valve not lockable |
| Actuating element | Hand lever, with detent |
| Sealing principle | Soft sealing |
| Working pressure min./max. | 0 bar / 10 bar |
| Ambient temperature min./max. | -25 °C / +80 °C |
| Medium temperature min./max. | -25 °C / +80 °C |
| Medium | Compressed air |
| Max. particle size | 50 µm |
| Oil content of compressed air | 0 mg/m³ - 5 mg/m³ |
| Materials: | |
| Housing | Die cast zinc |
| Seals | Acrylonitrile Butadiene Rubber |
| Actuating element | Polyarylamide |

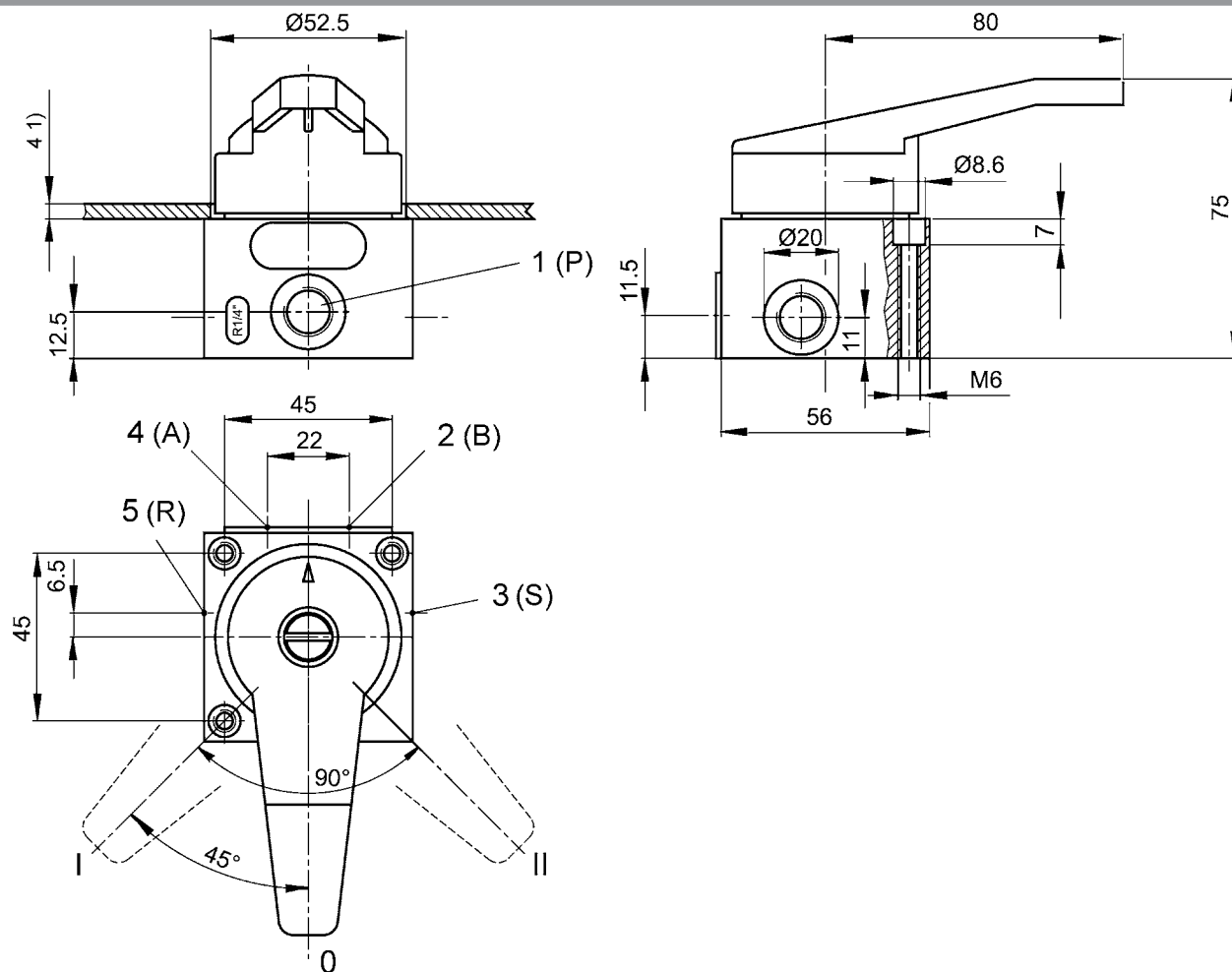
| | Compressed air connection | | | Qn | Weight | Part No. |
|--|---------------------------|--------|---------|---------|--------|-------------------|
| | Input | Output | Exhaust | | | |
| | | | | [l/min] | [kg] | |
| | G 1/4 | G 1/4 | G 1/4 | 1100 | 0.71 | 5631311100 |
| | G 1/4 | G 1/4 | G 1/4 | 1100 | 0.71 | 5631312100 |

Nominal flow Qn at 6 bar and Δp = 1 bar

5/3-directional valve, Series 563 131

► Qn= 1100 l/min ► pipe connection ► compressed air connection output: G 1/4

Dimensions



1) Max.

item 0 (5631311100): port 2 -> port 3; port 4 -> port 5

item 0 (5631312100): closed center

item I: port 1 -> port 4; port 2 -> port 3

item II: port 4 -> port 5; port 1 -> port 2

D563_132