

# Solenoid operated valves pilot operated poppet type

## 2-way normally open

### Special cavity, 019-E

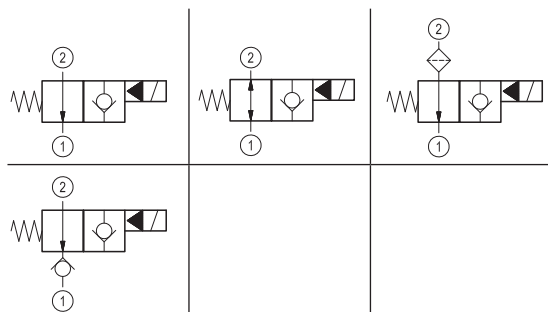
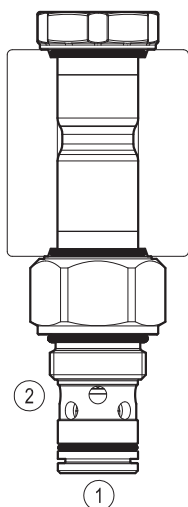
VEI-16-08S-NA

OD.15 - X - 19 - Y - Z-00

**RE 18323-28**

Edition: 04.2018

Replaces: 11.2017

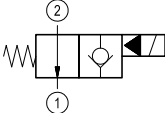
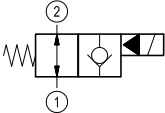
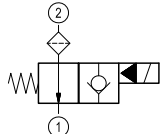
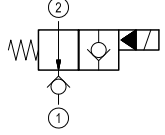
**PATENT PENDING****Technical data**

New VEI-16 family incorporates a new solenoid concept providing excellent performance and enables cartridges to work in severe environment. Cartridges also incorporate advanced design of hydraulic parts providing excellent hydraulic performance.

**Technical data**

General		
Weight		0.15 kg (0.33 lbs)
Installation orientation		Unrestricted
Ambient temperature range		-30 to 90 °C (-22 to 194 °F)
Hydraulic		
Max. operating pressure		350 bar (5000 psi)
Flow range		0.5 - 40 l/min (0.1 - 11 gpm)
Fatigue cycle life		2 million cycles at 350 bar 150000 cycles at 420 bar
Max. internal leakage		5 drops/min.
Switching time		Closing ≤ 100 ms Opening ≤ 30 ms
Fluid temperature range		-20 to 80 °C (-4 to 176 °F)
Fluids: Mineral-based or synthetics with lubricating properties at viscosities of 20 to 380 mm <sup>2</sup> /s (cSt)		
Installation torque		39 - 51 Nm (29 - 38 ft-lbs)
Recommended degree of fluid contamination		Nominal value max. 10 µm (NAS 8) ISO 4406 19/17/14
MTTFd		150 years see RE 18350-51
Special cavity		019-E see 18325-75
Seal kit for X=02,06,08	code	RG19E201052010
	material no.	R934003560
Seal kit for X=12	code	RG19E201053010
	material no.	R934003561
Seal kit coil and standard cap	code	RG02Z0010000100
	material no.	R930067869
Seal kit coil and protective cap only for Y=B	code	RG03Z0010000100
	material no.	R930067870
Seal kit coil and protective cap only for Y=C	code	RG04Z0010000100
	material no.	R930069171
Other technical data		See data sheet 18350-50
Electrical		
Type of voltage		DC voltage
Coil type		D36
Supply voltage		See data sheet 18325-90
Voltage tolerance against ambient temperature		See characteristic curve
Power consumption		20 W
Type of protection		See data sheet 18325-90
Note: Coils must be ordered separately		

Ordering code

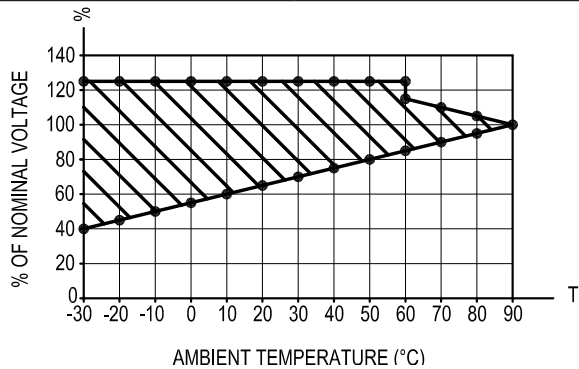
OD.15	X	19	Y	Z	0000	*
Solenoid operated valves pilot operated poppet type 2-way normally open						Series O/A to L unchanged performances and dimensions
monodirectional type 	02					0 = With buna seal V = With Viton seal P = With buna seal and protective cap for override version <b>B</b> and <b>C</b> T = With Viton seal and protective cap for override version <b>B</b> and <b>C</b>
bidirectional type 	06					
monodirectional type with filter 	08					A = Standard B = Push style manual override C = Push and twist style manual override
monodirectional type with check 	12					Special cavity: 019-E

Type	Material number
OD150619A000000	R930058434
OD150619B000000	R930058437
OD150819A000000	R930058426
OD150819B000000	R930060936
OD150219A000000	R930060915

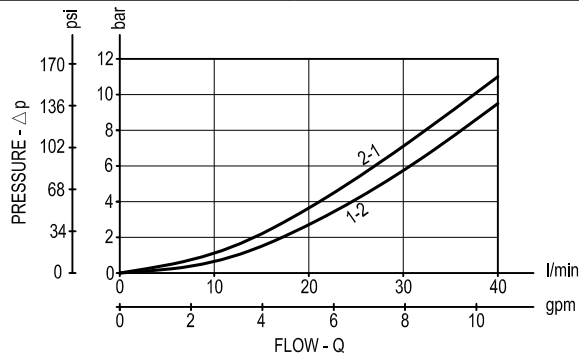
Type	Material number
OD150219B000000	R930060917
OD151219A000000	R930060944
OD151219B000000	R930060946

Characteristic curves

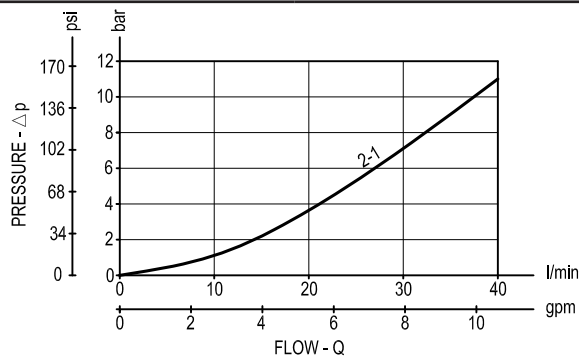
All Versions - Admissible supply voltage Vs. Ambient temperature at 100% duty cycle

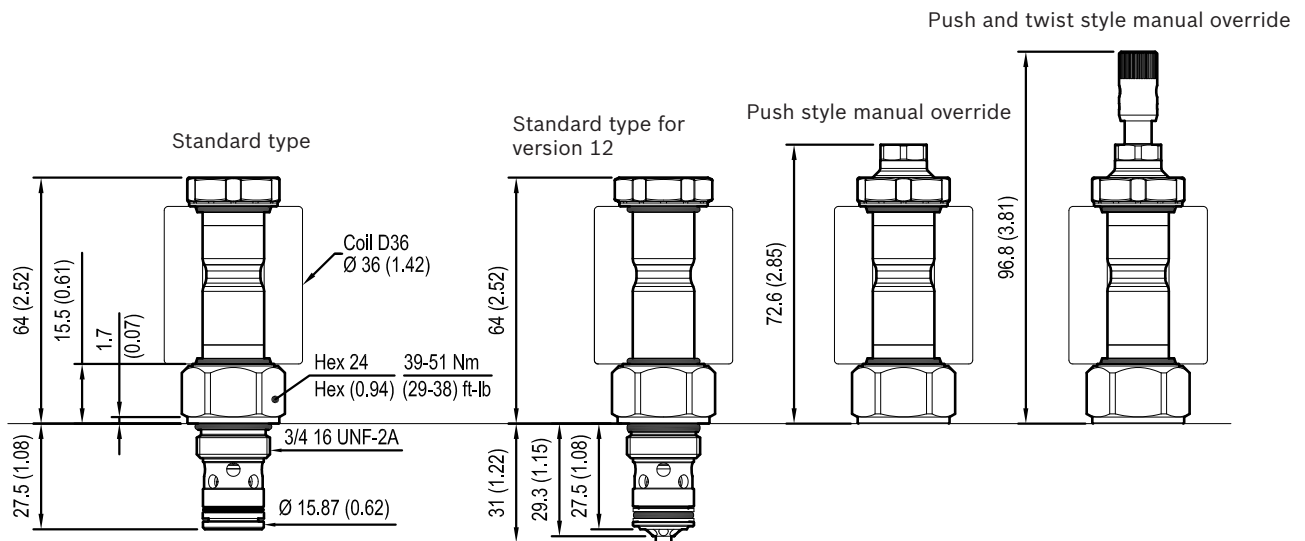


Version 02-06-08



Version 12



**Dimensions****Solenoid operated valves, poppet 2-way  
normally open**

Push style manual override and protective cap  
Push and twist style manual override and protective cap

