

# Pressure reducing, pilot operated spool type

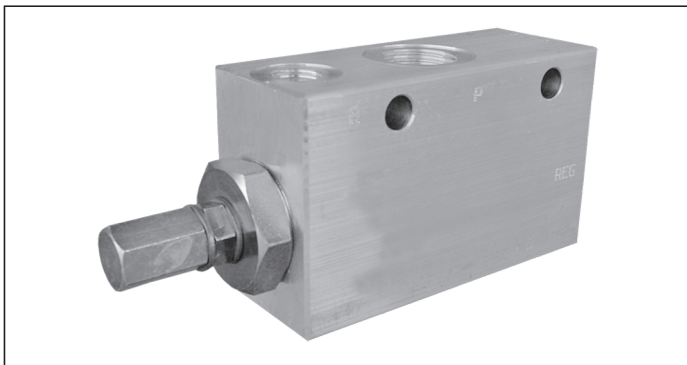
VRPC-150

05.90.33 - X - Y - Z

**RE 18309-74**

Edition: 09.2020

Replaces: 03.2016



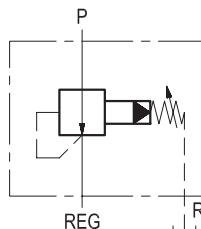
## Description

Initially, flow passes freely from P to REG. When the pressure at REG exceeds the pressure setting, the valve acts to restrict input flow at P. This increases the pressure drop through the valve and maintains consistent pressure at REG. The spring chamber is drained to prevent a build-up of back-pressure against the spool.

## Technical data

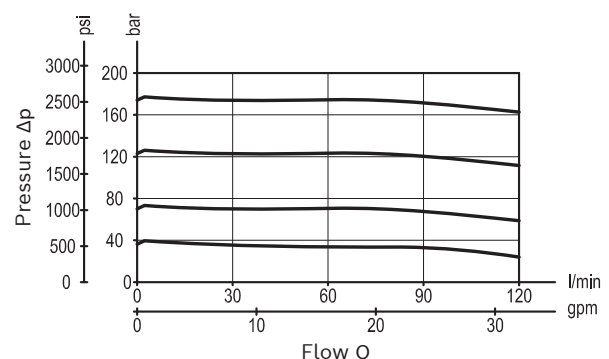
Max. operating pressure	210 bar (3000 psi)
Max. flow	120 l/min. (32 gpm)
Standard internal orifice: 0.6 mm	
Weight	1 kg (2.2 lbs)
Manifold material	Aluminium
Note: aluminium bodies are often strong enough for operating pressures exceeding 210 bar (3000 psi), depending from the fatigue life expected in the specific application. If in doubt, consult our Service Network.	
Fluid	Mineral oil (HL, HLP) according DIN 51524
Fluid temperature range	-30 °C to 100 (-22 to 212 °F)
Viscosity range	10 to 500 mm <sup>2</sup> /s (cSt)
Recommended degree of fluid contamination	Class 19/17/14 according to ISO 4406
Other technical data	see data sheet 18350-50

Note: for applications outside these parameters, please consult us.



P = Inlet  
REG = A (Reduced pressure)  
R = T (Tank)

## Characteristic curve



Ordering code

Pressure reducing  
pilot operated spool type

Adjustments

**03**      Leakproof hex. socket screw



Port sizes	P	R	REG
<b>03</b>	G 1/2	G 1/4	G 1/2

05.90.33	X	Y	Z
----------	---	---	---

SPRINGS		
Adj. pressure range bar (psi)	Pres. increase bar/turn (psi/turn)	Std. setting Q=5 (l/min) bar (psi)
<b>20</b> 20-210 (290-3000)	32 (464)	100 (1450)

Preferred types

Type	Material number
05903303032000A	R930002598
05903303042000A	R930002599

Type	Material number

Dimensions

