

Flow control, 2-way pressure compensated,
fixed setting

Common cavity, Size 10

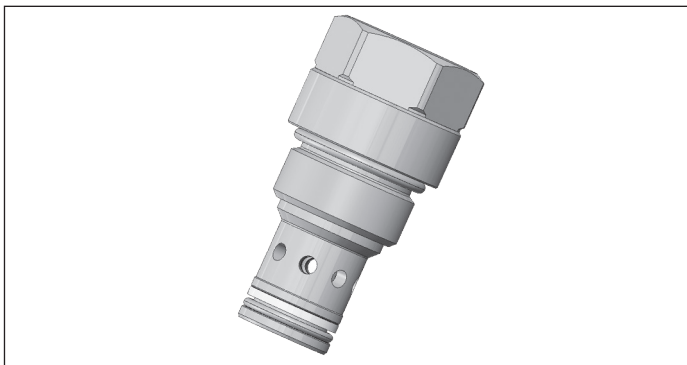
VRFA-10A-TF

04.02.01.00.85 - Z

RE 18321-13

Edition: 03.2016

Replaces: 09.2009



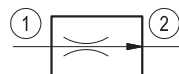
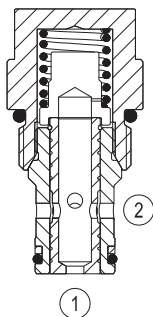
Description

A constant flow rate, regardless of system pressures, is established from 1 to 2 while a minimum pressure differential of 14 bar (200 psi) exists between the two ports. The valve cannot be adjusted for variable flow output. Flow from 2 to 1 is limited by the diameter of the selected control orifice and is not pressure compensated.

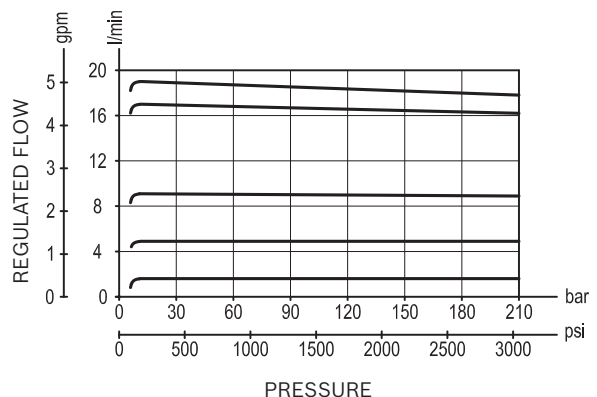
Technical data

Pressure min. - max.	14 - 350 bar (200 - 5000 psi)
Flow range	see "Regulated flow range" table
Fluid temperature range	-30 to 100 °C (-22 to 212 °F)
Installation torque	41 - 47 Nm (30 - 35 ft-lbs)
Weight	0.14 kg (0.31 lbs)
Cavity	CA-10A-2N (see data sheet 18325-70)
Lines bodies and standard assemblies	Please refer to section "Hydraulic integrated circuit" or consult factory
Seal kit ¹⁾	Code: RG10A2010520100 material no: R901111363
Fluids	Mineral-based or synthetics with lubricating properties at viscosities of 10 to 500 mm ² /s (cSt)
Recommended degree of fluid contamination	Nominal value max. 10µm (NAS 8) / ISO 4406 19/17/14
Installation	No restrictions
Other Technical Data	See data sheet 18350-50

¹⁾ Only external seals for 10 valves



Characteristic curve



Ordering code

04.02.01.00	85	Z	00	*
-------------	----	---	----	---

Flow control, 2-way pressure compensated
fixed setting

Series 0/A to L
unchanged performances and dimensions

Version and options standard

85 Common cavity, Size 10

	Regulated flow range l/min. (gpm) ± 10%
02	1.7 (0.5)
04	3.5 (0.9)
05	5 (1.3)
07	7.2 (1.9)
09	8.7 (2.3)
17	17 (4.5)
19	19 (5)

Preferred types

Type	Material number
040201008502000	R930005608
040201008504000	R930005609
040201008505000	R930005610
040201008507000	R930005611

Type	Material number
040201008509000	R930005612
040201008517000	R930005613
040201008519000	R930005614

Dimensions

