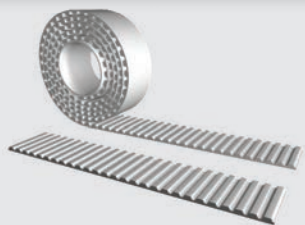


ATL5

Open-Ended "M"

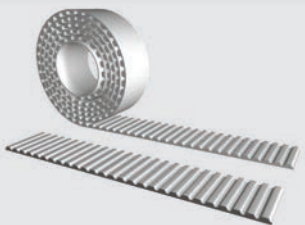


Specifications

Widths (mm) In between widths available	16	20	25	32	
Lengths	Any lengths available - Stock rolls 50 meters				
Available Options	Nylon coating tooth side (PAZ)				
Tension Member Options	Hi-flex steel VA301 Stainless steel VA316 Hi-flex Stainless steel				

ATL10

Open-Ended "M"

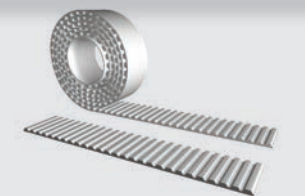


Specifications

Widths (mm) In between widths available	25	32	50	75	
Lengths	Any lengths available - Stock rolls 50 meters				
Available Options	Nylon coating tooth side (PAZ)				
Tension Member Options	Steel standard Hi-flex steel Polyurethane sealed steel VA301 Stainless steel VA316 Hi-flex Stainless steel				

ATL20

Open-Ended "M"



Specifications

Widths (mm) In between widths available	32	50			
Lengths	Any lengths available - Stock rolls 50 meters				
Available Options	Nylon coating tooth side (PAZ)				
Tension Member Options	Steel standard VA301 Stainless steel VA316 Hi-flex Stainless steel				

Specifications

Timing Belt	Pitch (mm)	Code	Ultimate Tensile Strength (N/10mm belt width)	Maximum Allowable Tensile Strength (N/10mm belt width)	Specific Belt Stiffness Steel Reinforced (Per unit width/length)	Specific Belt Mass (per 10mm belt width, steel reinforced)	Min. # of Teeth on Pulley / Flat Idler Min. Ø no back bending	Min. # of Teeth on Pulley / Flat Idler Min. Ø with back bending
ATL-Series®	ATL5	M	3360	840	2.10×10^5 N	0.037 kg/m	25 / 40mm	24 / 60mm
ATL-Series®	ATL10	M	6400	2240	5.60×10^5 N	0.068 kg/m	25 / 80mm	25 / 150mm
ATL-Series®	ATL20	M	6400	3150	7.88×10^5 N	0.110 kg/m	25 / 160mm	25 / 250mm