

Relief, direct acting guided poppet type Common cavity, Size 10

VSBN-10A

04.11.55 - X - 85 - Z

RE 18318-05

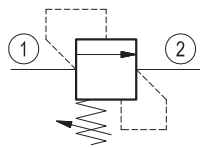
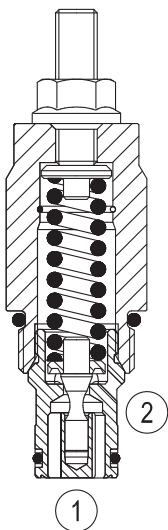
Edition: 10.2021

Replaces: 01.2019



Description

Flow is blocked from 1 to 2 until pressure increases to meet the selected valve setting, lifting the poppet from its seat and allowing relief flow through port 2 to tank. Pressure at port 2 is additive to the relief setting of the valve. The unique Bosch Rexroth Oil Control poppet design provides enhanced stability at all flows and pressures.



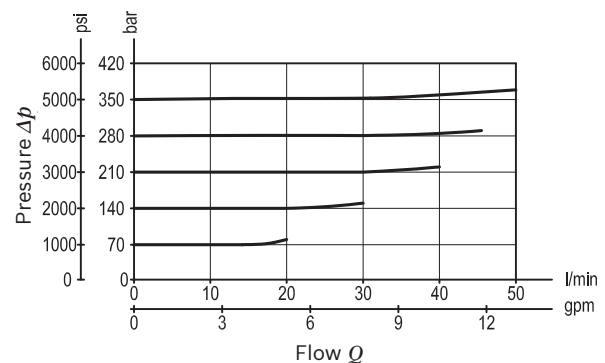
Technical data

Max. operating pressure port 1 (P)	350 bar (5000 psi)
Max. pressure admitted port 2 (T)	350 bar (5000 psi)
Max. flow	50 l/min (13 gpm)
Max. internal leakage ¹⁾	15 drops/min.
Fluid temperature range	-30 to 100 °C (-22 to 212 °F)
Installation torque	41 - 47 Nm (30 - 35 ft-lbs)
Weight	0.2 kg (0.44 lbs)
Cavity	CA-10A-2N (see data sheet 18325-70)
Lines bodies and standard assemblies	Please refer to section "Hydraulic integrated circuit" or consult factory
Seal kit ²⁾	Code: RG10A2010530100 material no: R901111366
Fluids	Mineral-based or synthetics with lubricating properties at viscosities of 10 to 500 mm ² /s (cSt)
Recommended degree of fluid contamination	Nominal value max. 10µm (NAS 8) / ISO 4406 20/18/15
Installation position	No restrictions
Other Technical Data	See data sheet 18350-50

1) At 80% of pressure setting

2) Only external seals for 10 valves

Characteristic curve



Ordering code

04.11.55	X	85	Z	00	*
----------	---	----	---	----	---

Relief, direct acting guided

Series O/A to L
unchanged performances and dimensions

Version and options standard

Adjustments

03 Leakproof hex. socket screw

04 Handknob and locknut

85 Common cavity, Size 10

SPRINGS

		Adj. press. range bar (psi)	Pressure increase bar/turn (psi/turn)	Std. setting bar (psi) Q=5 l/min
for X= 03	05	* 5-70 (75-1000)	16 (232)	50 (725)
	10	35-120 (500-1740)	24 (348)	100 (1450)
	20	105-210 (1500-3000)	54 (783)	200 (2900)
	35	175-350 (2500-5000)	84 (1218)	350 (5000)
for X= 04	10	25-110 (363-1595)	19 (276)	100 (1450)
	35	90-350 (1305-5075)	68 (986)	350 (5000)

Note: Special settings available. Contact factory authorized representative for ordering code.

* minimum pressure setting intended with Q=5 l/min

Preferred types

Type	Material number
041155038505000	R901191831
041155038510000	R901113609
041155038520000	R901113610
041155038535000	R901115702

Type	Material number
041155048510000	R930058261
041155048535000	R930058262

Dimensions

