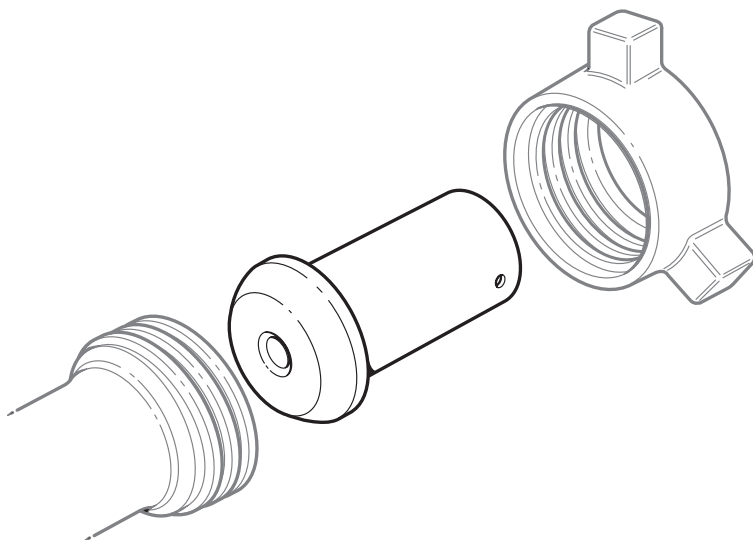
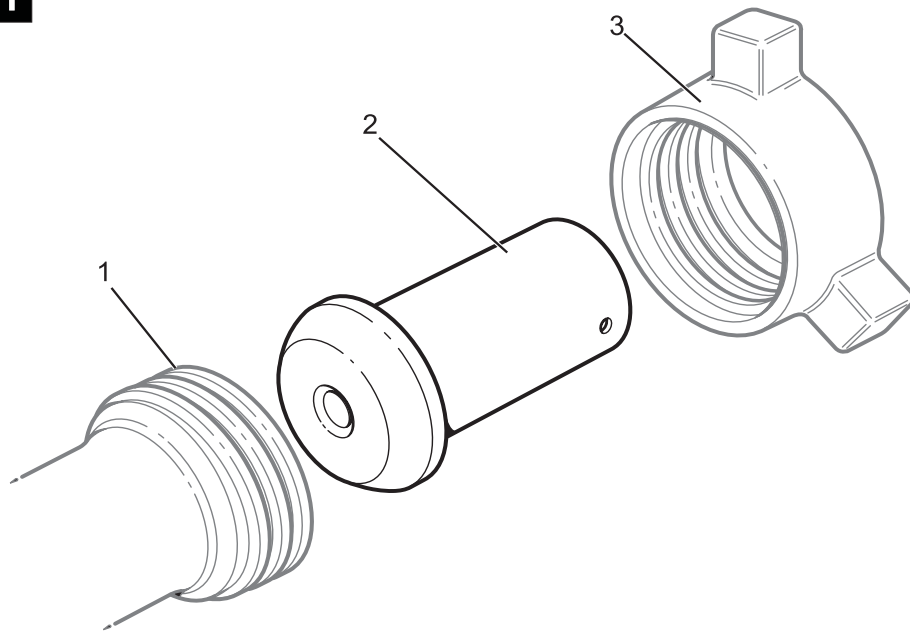


# Druck PTX 661 Hammer Union Transmitter

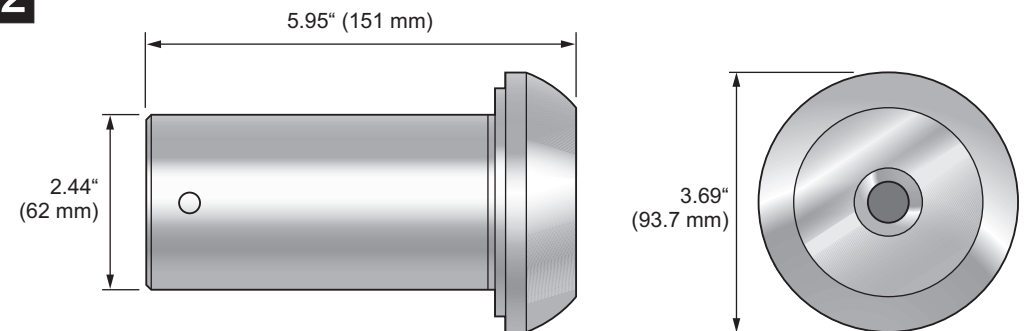
User Instructions - KA233



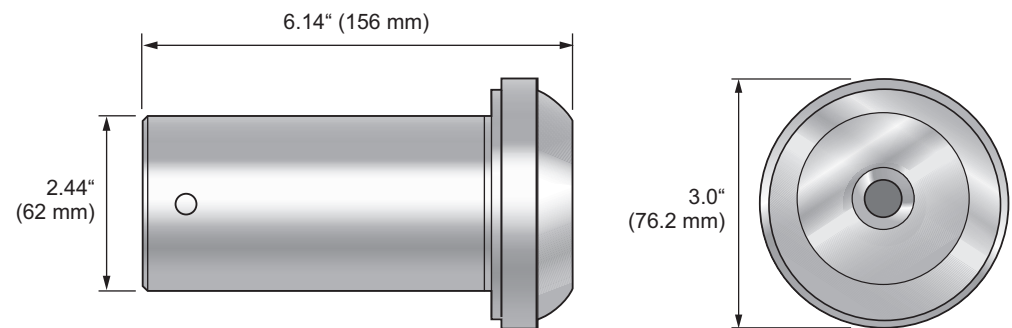
1



2



PTX 661 Hammer Union Transmitter with pressure connection WECO® male sub #1502



PTX 661 Hammer Union Transmitter with pressure connection WECO® male sub #2202

Introduction

The Druck PTX 661 Hammer Union Transmitter accurately measures the pressure of fluids in pressure ranges up to 15,000 psi (0 to 1035 bar). The transmitter assembly has been designed to be located in a WECO® female sub and secured by a WECO® wrought nut.

The transmitter assembly comprises the pressure transmitter PTX 721-8518 contained in a sensor housing with a WECO® male sub pressure connection. A back end assembly and circlip seals the sensor housing; it requires a power supply of 10 to 28 V d.c. and produces an output of 4 to 20 mA.

Key to 1

- 1 WECO® female sub
- 2 WECO® male sub transmitter assembly
- 3 WECO® wrought nut

Installation

- 1. Before installation, inspect the transmitter for obvious signs of damage and distortion.

**Recommended for non-intrinsically safe installations\***  
To avoid electrical interference, use shielded cable with the shield connected to ground at both ends.

- 2. Install the Hammer Union Transmitter Assembly in accordance with the WECO® Union Installation Instructions and, \*for intrinsically safe installations, refer to Druck publication K383.

**CAUTION: THE SENSING DIAPHRAGM CAN BE DAMAGED. WHEN CLEANING, DO NOT INSERT ANY SHARP OBJECT OR APPLY HIGH PRESSURE WATER DIRECTLY INTO THE PRESSURE PORT.**

- 3. Before dismantling or reinstalling the transmitter, remove the mud and debris using a water pressure jet. Remove all encrusted mud and debris.

**Note:** To replace the transmitter refer to Druck Replacement Instructions publication KA234.

Specification

Pressure ranges:

- ..... 0 to 5000 psi (345 bar)
- ..... 0 to 10,000 psi (690 bar)
- ..... 0 to 15,000 psi (1035 bar)

Proof pressure (or maximum working pressure)

- ..... 1.5 x full-scale to 20,000 psi (1380 bar) maximum
- Containment..... 2 x full-scale to 20,000 psi (1380 bar) maximum
- Over-pressure ..... 1.5 x full-scale to 20,000 psi (1380 bar) maximum
- Environmental protection .....IP66

Pressure media: ..... Fluids compatible with NACE sour gas  
..... 316L stainless steel, 625 Inconel and x750 Inconel

# Druck PTX 661 Hammer Union Transmitter User Instructions

## Accuracy:

Combined non-linearity, hysteresis and repeatability error .. $\pm 0.1\%$  BSL  
Temperature error band..... $\pm 1\%$  of full-scale  
Power supply .....10 to 28 V d.c  
Output .....4 to 20 mA  
Zero setting ..... $\pm 0.16$  mA ( $\pm 1\%$  of span @ 42°F [23°C])  
Span setting..... $\pm 0.08$  mA ( $\pm 0.5\%$  of span @ 42°F [23°C])

## Temperature ranges:

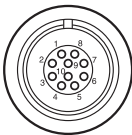
Storage.....-65°F to +302°F [-54°C to +150°C]  
Operating.....-40°F to +248°F [-40°C to +120°C]  
Compensated .....-4°F to +176°F [-20°C to +80°C]

## Weight:

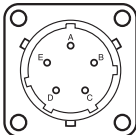
(approximate) ..... 6 lbs (2.7 kg)

Dimensions..... see figure 2 (not to scale)

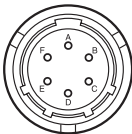
Refer to the data sheet for further details, other pressure ranges available on request.



10-pin  
Lemo connector  
pin 5 +ve  
pin 6 -ve



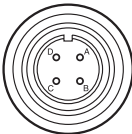
5-pin  
MIL-C-26482 connector  
pin A +ve  
pin B -ve



6-pin  
MIL-C-26482 connector  
pin A +ve  
pin B -ve



6-pin RSFLV-66  
Turck Banner connector  
pin 2 +ve  
pin 3 -ve



4-pin  
MIL-C-5015 connector  
pin C +ve  
pin B -ve

## Connector details



This product complies with the requirements of the relevant EC directives. For data on the applied directives and standards refer to the ‘Declaration of Conformity’.