

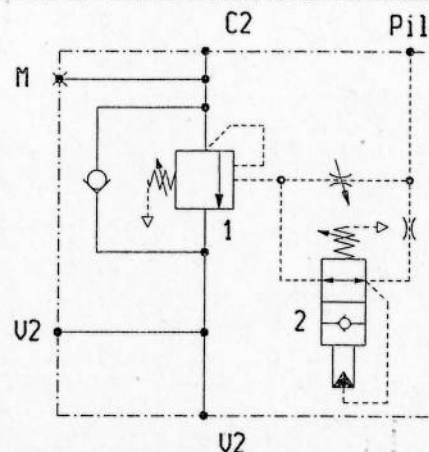
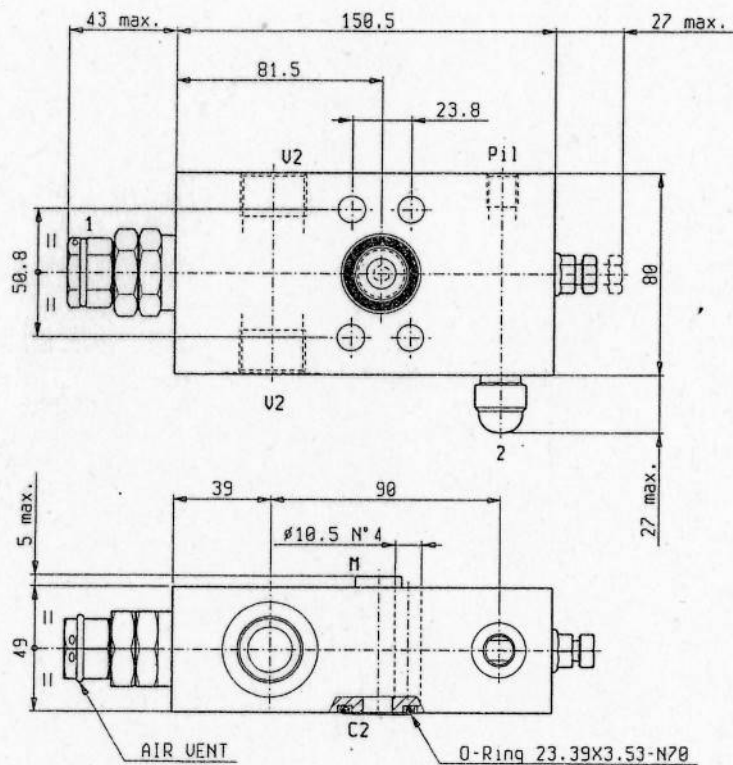


**PILOT ASSISTED, "CCAP" TYPE, SERIES "33"
OVERCENTRE – FULLY PRESSURE COMPENSATED.**



AVBSOSECCAP33PSE34SAE

08.35.62 - X - Y - Z



TECHNICAL DATA

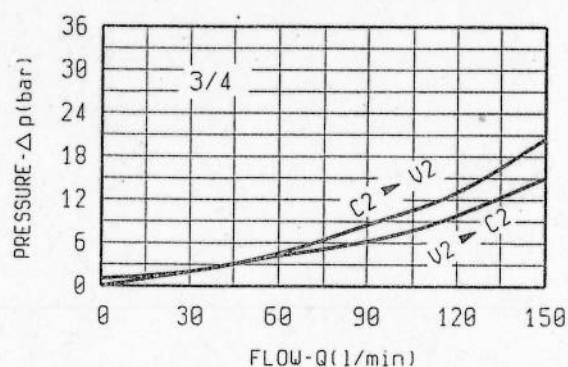
Max. pressure : 350 bar

Max. flow : see performance graph

Steel body

Pressure setting : at least 1.3 times the load induced pressure.

Valve 2 allows quick pressurization of pilot piston, without exceeding the opening threshold.



X PILOT RATIO

65 8:1

Z

SPRINGS

Z		SPRINGS				
		Adj.press. range bar	Press.increase bar/turn	Std.setting bar (Q=5 l/min)	Ordering code	Pilot press. Shut-off (bar)
35	1	100-350	84	350	03.51.01.287	—
	2	15-35	16.5	—	—	30

Y

PORT SIZE

72	V2	C2	Pil - M
	G 3/4	3/4 SAE 6000	G 1/4