

Solenoid operated valves pilot operated poppet type

2-way normally open

Special cavity, 021-E

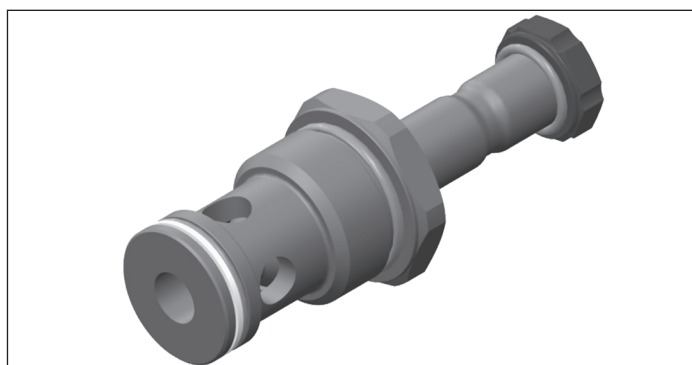
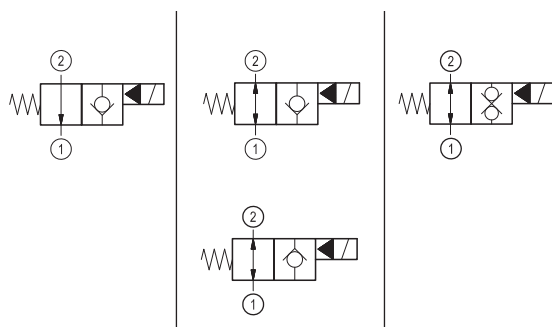
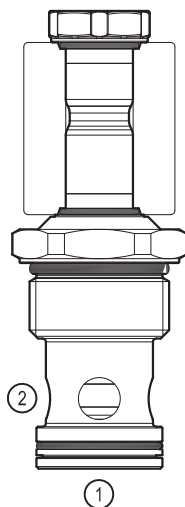
VEI-16-021-NA

OD.15 - X - 21 - Y - Z - 00

RE 18323-38

Edition: 09.2018

Replaces: 06.2018

**PATENT PENDING****Technical data**

New VEI-16 family incorporates a new solenoid concept providing excellent performance and enables cartridges to work in severe environment. Cartridges also incorporate advanced design of hydraulic parts providing excellent hydraulic performance.

Technical data

General		
Weight		0.35 kg (0.77 lbs)
Installation orientation		Unrestricted
Ambient temperature range		-30 to 90 °C (-22 to 194 °F)
Hydraulic		
Max. operating pressure		350 bar (5000 psi)
Flow range		5 - 150 l/min (1 - 40 gpm)
Fatigue cycle life		1 million cycles at 350 bar
Max. internal leakage:		20 drops/min. for X= 02,06
Switching time		Closing ≤ 100 ms Opening ≤ 50 ms
Fluid temperature range		-20 to 80 °C (-4 to 176 °F)
Fluids: Mineral-based or synthetics with lubricating properties at viscosities of 20 to 380 mm ² /s (cSt)		
Installation torque		130 - 150 Nm (96 - 111 ft-lbs)
Recommended degree of fluid contamination		Nominal value max. 10 µm (NAS 8) ISO 4406 19/17/14
MTTFd		150 years see RE 18350-51
Special cavity		021-E see 18325-75
Seal kit for X=02,06	code	RG21E201052010
	material no.	R934003566
Seal kit for X=04,32	code	RG21E201053010
	material no.	R934003567
Seal kit coil and standard cap	code	RG02Z0010000100
	material no.	R930067869
Seal kit coil and protective cap only for Y=B	code	RG03Z0010000100
	material no.	R930067870
Seal kit coil and protective cap only for Y=C	code	RG04Z0010000100
	material no.	R930069171
Other technical data		See data sheet 18350-50
Electrical		
Type of voltage		DC voltage
Coil type		D36
Supply voltage		See data sheet 18325-90
Voltage tolerance against ambient temperature		See characteristic curve
Power consumption		20 W
Type of protection		See data sheet 18325-90
Note: Coils must be ordered separately		

Ordering code

<div> <div>OD.15</div> <div>X</div> <div>21</div> <div>Y</div> <div>Z</div> <div>0000</div> <div>*</div> </div>						
<div> <div>Solenoid operated valves</div> <div>pilot operated poppet type</div> <div>2-way normally open</div> </div>		<div>Series 0/A to L</div> <div>unchanged performances and dimensions</div>				
<div> <div>monodirectional type</div> <div> </div> </div>		02	<div> <div>0 = With buna seal</div> <div>V = With Viton seal</div> <div>P = With buna seal and protective cap for override version B and C</div> <div>T = With Viton seal and protective cap for override version B and C</div> </div>			
<div> <div>bidirectional type</div> <div> </div> </div>		06				
<div> <div>bidirectional type</div> <div> </div> </div>		32	<div> <div>A = Standard</div> <div>B = Push style manual override</div> <div>C = Push and twist style manual override</div> </div>			
<div> <div>bidirectional type</div> <div> </div> </div>		04	<div>Special cavity: 021-E</div>			

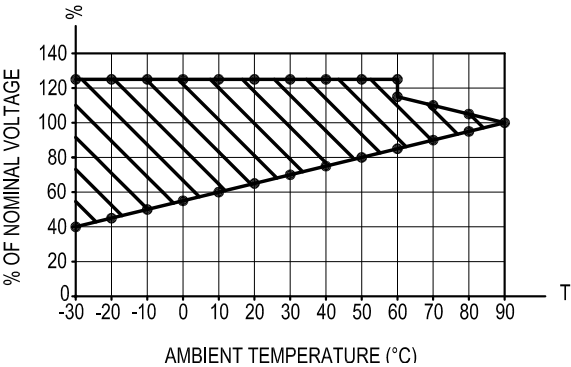
Preferred types

Type	Material number
OD150221A000000	R930063874
OD150621A000000	R930066964
OD150621C000000	R930066969
OD153221A000000	R930067155
OD153221C000000	R930069397
OD153221CP00000	R930068527
OD150621B000000	R930068776
OD150421A000000	R930066970
OD150421C000000	R930069396

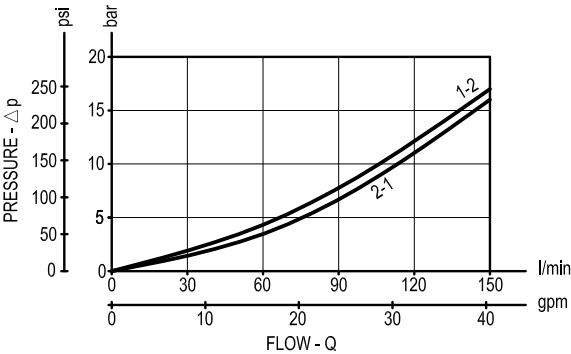
Type	Material number

Characteristic curves

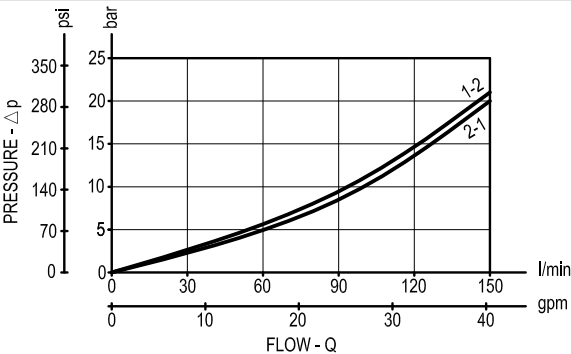
All Versions - Admissible supply voltage Vs. Ambient temperature at 100% duty cycle



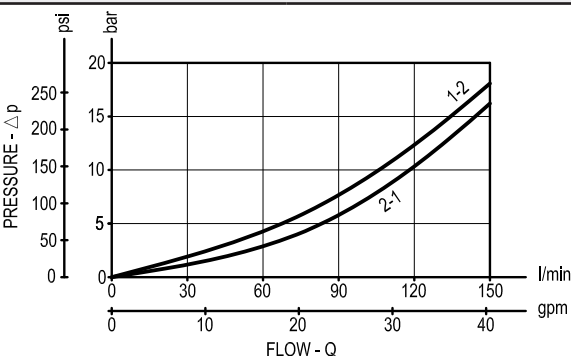
Versions 02, 06



Version 32



Version 04



Dimensions**Solenoid operated valves, poppet 2-way
normally open**