

Solenoid operated valves

2-way 2-positions

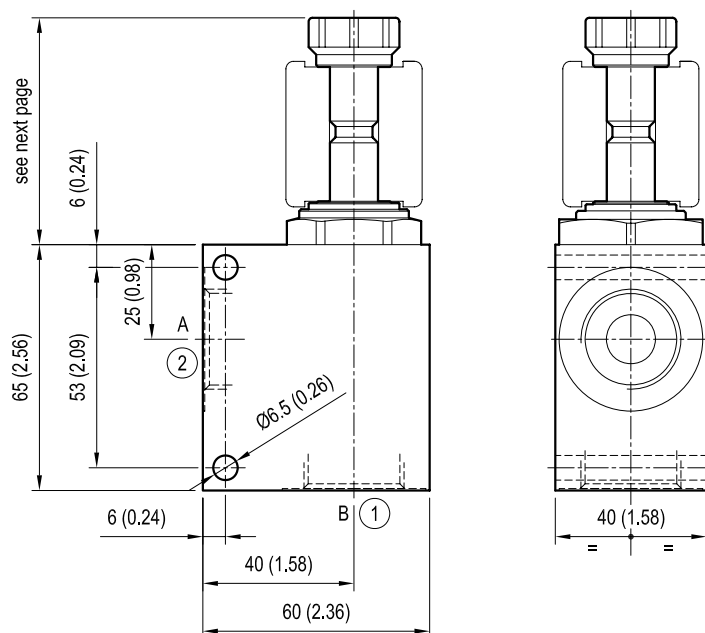
Special cavity

Cartridge style in manifold

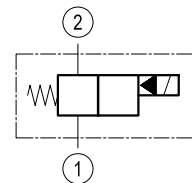
VEI-CS-8A-09

OS.15 - K - 17 - Y - Z - W

Dimensions



[mm (inches)]



Cartridge schemes

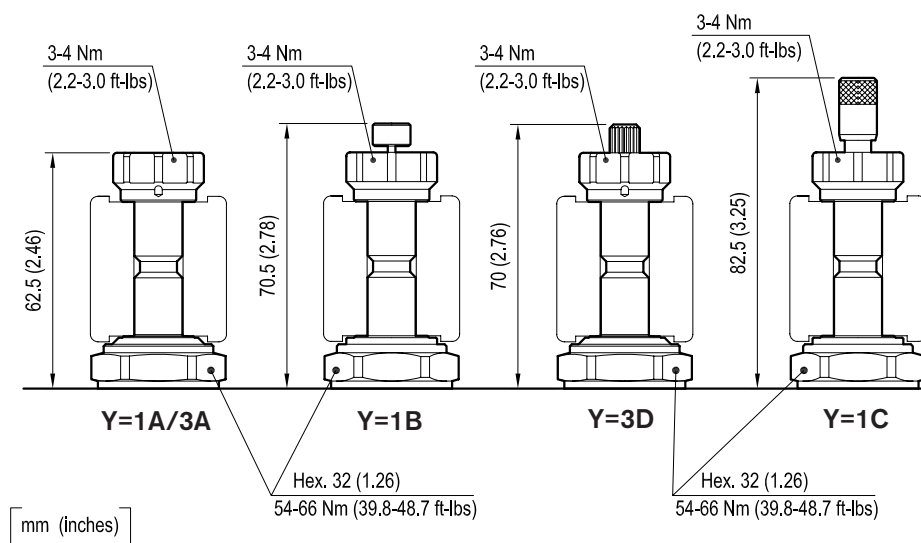
monodirectional type	bidirectional type

Technical data

Max flow:	up to 70 l/min	(19 gpm)
Max operating pressure for steel body:	350 bar	(5000 psi)
Max operating pressure for aluminium body:	210 bar	(3000 psi)

To order only manifold see data sheet RE 18325-85

Dimensions



CARTRIDGE TECHNICAL DATA

Special cavity: **017-E**

Filtration: 25 µm nominal or better

Minimum voltage required: 90% of nominal value

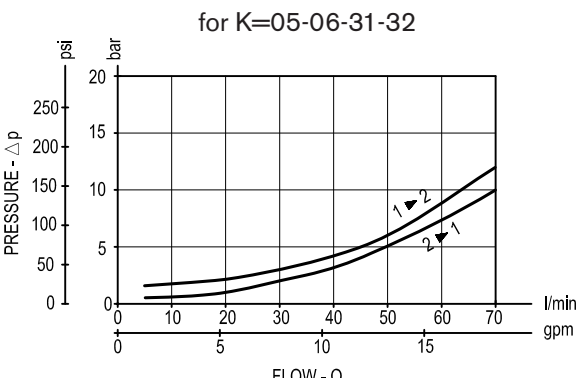
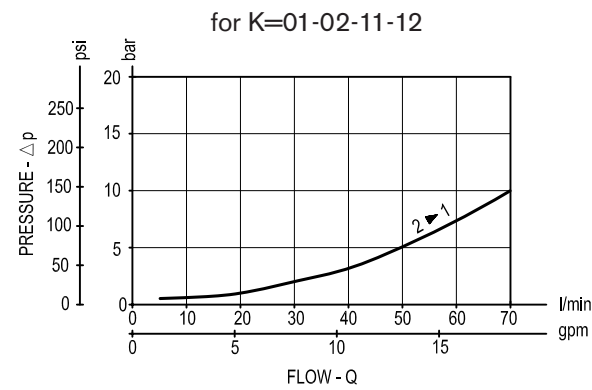
Coil : S8-356 **must be ordered separately** see data sheet RE 18325-90

Mounting position: unrestricted

For other details see cartridge data sheet

OS15		- K -		17	- Y -	- Z -		- W -		CARTRIDGE SCHEME	
		monodir.	bidir.		Rated Flow 70 l/min (19 gpm)	Ports size 1-2 G 1/2 G 3/4		Material Aluminium Steel		monodir.	bidir.
CARTRIDGE CODE	OD15	01	05	17	3A	03	04	00	S0		
	OD15	01	05	17	3D	03	04	00	S0		
	OD15	02	06	17	1A	03	04	00	S0		
	OD15	02	06	17	1B	03	04	00	S0		
	OD15	02	06	17	1C	03	04	00	S0		
	OD15	11		17	3A	03	04	00	S0		
	OD15	11		17	3D	03	04	00	S0		
	OD15	12		17	1A	03	04	00	S0		
	OD15	12		17	1B	03	04	00	S0		
	OD15	12		17	1C	03	04	00	S0		
	OD15		31	17	3A	03	04	00	S0		
	OD15		31	17	3D	03	04	00	S0		
	OD15		32	17	1A	03	04	00	S0		
	OD15		32	17	1B	03	04	00	S0		
	OD15		32	17	1C	03	04	00	S0		

Performance graphs



Ordering code

OS.15		K	17	Y	Z	W		
Manifold with solenoid operated valve, 2-way 2-positions							Manifold material	
							= 00	Aluminium
							= S0	Steel
Cartridge scheme (see page 1 and 2)								
= 01								
= 02								
= 11							Monodirectional	
= 12								
= 05								
= 06								
= 31		Bidirectional						
= 32								
Special cavity 017-E				See table on page 2				

Preferred types (readily available)

Type	Material number	Type	Material number
OS1501173D0400	R934000429	OS1532171A0300	R934002987
OS1502171B0300	R934001259	OS1532171A0400	R934002991
OS1502171C0400	R934002832	OS1532171B0400	R934002887
OS1505173A0300	R901201266	OS1532171B04S0	R934002938
OS1505173A0400	R934002859	OS1532171C0300	R934002995
OS1505173D0300	R934002863		
OS1505173D0300	R934002863		
OS1505173D0400	R934002865		
OS1506171A0300	R934002901		
OS1506171A0400	R934002904		
OS1506171B0300	R934002906		
OS1506171B0400	R934002909		
OS1506171C0300	R934002911		
OS1506171C0400	R934002917		
OS1531173A0300	R934002963		

Further types available by request