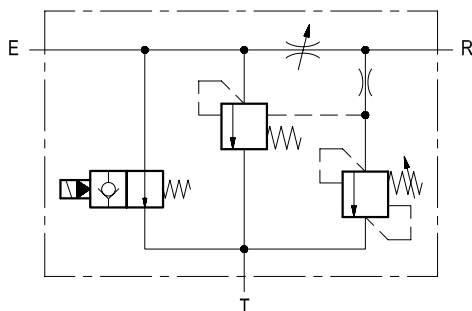


Flow regulator, 3-way, pressure compensated, with relief and solenoid by-pass

VRFC3-VS-BPE

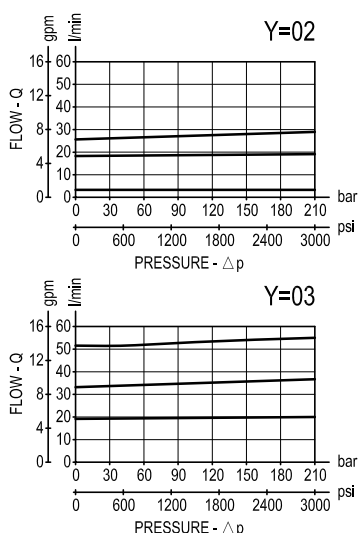
0M.38.03 - X - Y



Description

A constant pressure compensated flow rate is established from E to R, while a minimum pressure differential of appr. 5 bar (70 psi) exists between the two ports. Input flow supplied to E in excess of the regulated output at R is by-passed to T. Regulated flow can be varied from closed to the nominal maximum rating of the valve and its pressure is controlled by a relief cartridge which will dump to Tank the output flow if the maximum pressure is reached. A normally open solenoid cartridge by-passes all Inlet flow to tank when de-energized. Reverse flow from R to E is limited by the selected opening of the restrictor and is not pressure compensated. Flow from T to R is not permitted.

Performance



Technical data

Hydraulic

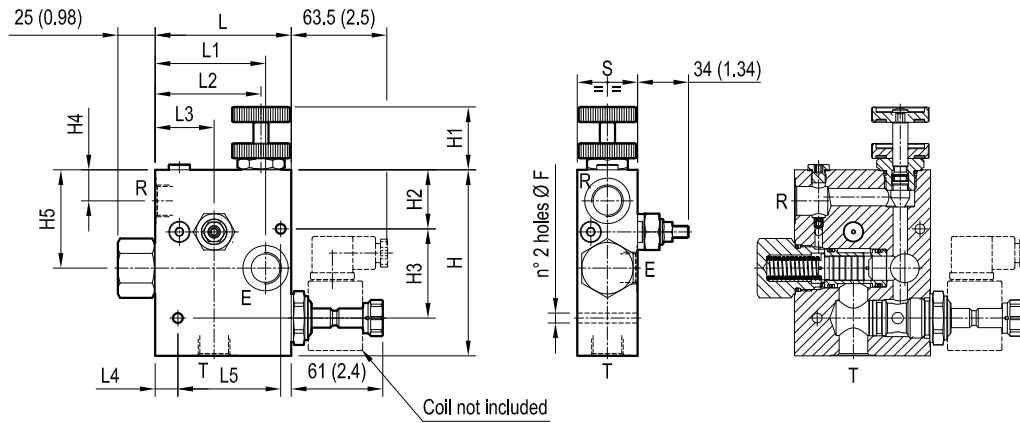
Operating pressure	bar (psi)	up to 210 (3000)
Adj. relief valve: range 35-210 bar (500-3000 psi)		
Standard setting: 210 bar (3000 psi)		
QE = max inlet flow "E" port (see "Dimensions")		
QR = max regulated flow "R" port (see "Dimensions")		
Flow range adjustment : 0 - 3 turns		
The coil must be ordered separately		

General

Manifold material	Aluminium
Note: aluminium bodies are often strong enough for operating pressures exceeding 210 bar (3000 psi), depending from the fatigue life expected in the specific application. If in doubt, consult our Service Network.	
Weight	see "Dimensions"
Viscosity	20 to 380 mm²/s (cSt)
Fluid temperature range	°C (°F) between -20 (-4) and +80 (176)
Other technical data	see data sheet RE 18350-50

Note: for applications outside these parameters, please consult us.

Dimensions



40 (1.58)	68 (2.68)	15 (0.59)	39 (1.54)	70 (2.76)	73 (2.87)	90 (3.54)	65 (2.56)	20.5 (0.81)	59 (2.32)	39 (1.54)	40 (1.58)	123 (4.84)	6.5 (0.26)	55 l/min 10 gpm	90 l/min 24 gpm	G 1/2	1.55 (3.42)
40 (1.58)	68 (2.68)	15 (0.59)	39 (1.54)	70 (2.76)	73 (2.87)	90 (3.54)	65 (2.56)	19.5 (0.77)	59 (2.32)	39 (1.54)	40 (1.58)	123 (4.84)	6.5 (0.26)	30 l/min 8 gpm	55 l/min 15 gpm	G 3/8	1.55 (3.42)
S	L5	L4	L3	L2	L1	L	H5	H4	H3	H2	H1	F	QR	QE	Y	Weight kg (lbs)	

[mm (inches)]

Ordering code

0M.38.03	X	Y
----------	---	---

Flow regulator,
3-way, pressure compensated,
with relief and solenoid by-pass

Adjustments

= 70 Handknob and locknut



= 80 Screw and locknut



= 40 Graduated handknob



Port sizes	E - R - T
= 02	G 3/8
= 03	G 1/2

Type	Material number
0M380370020000B	R930004286
0M380370030000C	R930004287
0M3803800200000	R930000466
0M380380030000B	R930004290
0M3803400200000	R930000465
0M380340030000B	R930004284

[illegible]