

ZT15

Pressure Transmitters

for Semiconductor Industry

Outline

These are pressure transmitters developed for semiconductor industry, in which pressures are converted into electric signals and transmitted by the sensing portion equipped with evaporation coating type semiconductor strain gauge and a built-in electronic circuit. We provide two types of pressure transducers with UC / EP Grade for high-purity gas and BA / GP Grade achieved the cost down of gas piping without impairing the airtightness.

Features

- Highly corrosion-resistant pressure sensors made of Co-Ni alloy or SUS316L are welded directly to the fitting, giving them excellent corrosion resistance, air-tightness, long-term stability, and reliability.

* Please confirm that the gas contact part material is suitable for the gas to be measured.

- Few dead zone, where gas stagnates, exists.
- The pressure range of Gauge, Compound and Absolute were completed.

(For the absolute pressure range, please refer to separate catalogs.)

*1 ZT15-1□□, ZT15-2□□, ZT15-A□□, and ZT15-B□□ are CE marking non-compliant products.



RoHS

CE *1

List of grade

Cleanliness These pressure transmitters have been assembled, adjusted, inspected and packaged in a clean room, paying special attention for maintaining cleanliness.

Grade		UC (Ultra Clean)	BA (Bright Annealing)	EP (Electro Polishing)	GP (General Purpose)
Surface roughness of gas contact		0.18 μm Ra Avg. 0.7 μm Rz Max.	Approx. Rz 2.5 μm	0.18 μm Ra Avg.	0.5 μm Ra Avg.
Gas contact material	Pressure sensor	Co-Ni alloy		SUS316L	
	Fitting *1	SUS316L		SUS316L	
Maximum allowable pressure *2		200% of rated pressure		150% of rated pressure	
Leakage (Helium leak rate)		5 x 10 ⁻¹² Pa · m ³ /s or less		5 x 10 ⁻¹² Pa · m ³ /s or less	
Particle		Zero count for size 0.1 μm or greater (In our inspection standard)	—	Zero count for size 0.1 μm or greater (In our inspection standard)	—
Cleaning		Ultra clearance (Cleaning)	Degreasing	Ultra clearance (Cleaning)	Degreasing
Recommended gas *3		High-purity gas, semiconductor material gas, etc.	Purge gas, exhaust gas, etc.	High-purity gas, semiconductor material gas, etc.	Purge gas, exhaust gas, etc.



*2 For UC Grade, the pressure transmitter can be manufactured in DOUBLE MELT material by request. Please contact us.

*3 Allowable maximum pressure is the upper limit to which pressure may be temporarily increased while still allowing normal pressure to be resumed, when pressure levels return to the normal (rated) range. It is not guaranteed to have no impact on functionality in the case of repeated pressure or static pressure increases lasting 10 minutes or more.

*4 Please confirm that the gas contact part material is suitable for the gas to be measured.

* UC/EP Grade rises with double packing (filled with N₂).

Specification

Item	Description												
Fluid	Various kinds of process gases for semiconductor												
Pressure range	0 to 0.3, 0.5, 1, 2, 3.5, 5, 10, 20MPa -0.1 to 0.3, 0.5, 1, 2MPa												
Fitting shape	Type T  Type S 												
Connection	1/4, 3/8 UJR, VCR, JSK, CVC, etc.												
Pressure sensor seal method	Welding type												
Operating temperature	-20 to 70℃ (No freezing or condensation)												
Storage temperature	-30 to 80℃ (No freezing or condensation)												
Total error band *1	±1.0%F.S. at 23℃ (Standard) or ±0.5%F.S. at 23℃ (Option). However, 0.5MPa range or greater can be specified												
Temperature coefficient	± 0.1%F.S./℃ [Accuracy±1.0%F.S.] (Zero, Span) or ±0.05%F.S./℃ [Accuracy±0.5%F.S.] (Zero, Span)												
Electrical characteristics	<table><tr><td>Transmission system</td><td>2-wire system</td><td>3-wire system</td></tr><tr><td>Power source</td><td>24V DC±10%</td><td>24V DC±10% or 12V DC±10%</td></tr><tr><td>Output</td><td>4 to 20mA DC</td><td>1 to 5V DC</td></tr><tr><td>Load resistance</td><td>500Ω max.</td><td>10kΩ min.</td></tr></table>	Transmission system	2-wire system	3-wire system	Power source	24V DC±10%	24V DC±10% or 12V DC±10%	Output	4 to 20mA DC	1 to 5V DC	Load resistance	500Ω max.	10kΩ min.
Transmission system	2-wire system	3-wire system											
Power source	24V DC±10%	24V DC±10% or 12V DC±10%											
Output	4 to 20mA DC	1 to 5V DC											
Load resistance	500Ω max.	10kΩ min.											
CE marking *2	Applicable Directive: 2004/108/EC (EMC directive) Applicable Standards: EN61326-1:2006 EN61326-2-3:2006 *Please use it to connect to the indoor power distribution network which is not affected by the lightning surge voltage and power supply system switching transients.												
Construction	Indoor use												
Weight	Approx. 180 g (Excluding cable, varies depending on the fitting shape)												

*1 Total error band precision includes linearity, hysteresis and reproducibility.

*2 ZT15-1□□, ZT15-2□□, ZT15-A□□, and ZT15-B□□ are CE marking non-compliant products.

Connector and cable

Connector (Plug):

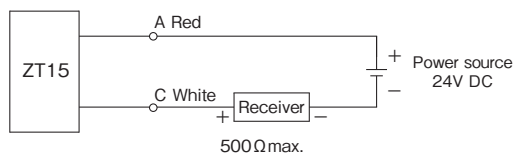
R03-P6M (Manufactured by Tajimi Electronics Co., Ltd.)

Cable:

	Environmental temperature	Conductor		Cable outer diameter	Minimum bending radius (mm)
		Cross-section area (mm ²)	Construction (pc./mm)		
Heat resistant cable	-20 to 105°C	0.3	12/0.18	φ 6.0	25

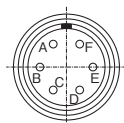
Wiring

2-wire system

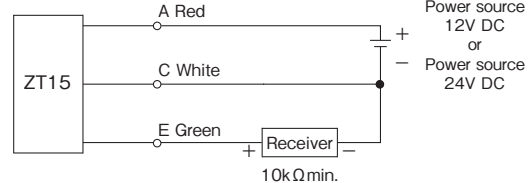


2-wire system Terminal distribution

A-Red: Power source (+)
C-White: Power source (-)



3-wire system



3-wire system Terminal distribution

A-Red: Power source (+)
C-White: Common
E-Green: Output (+)

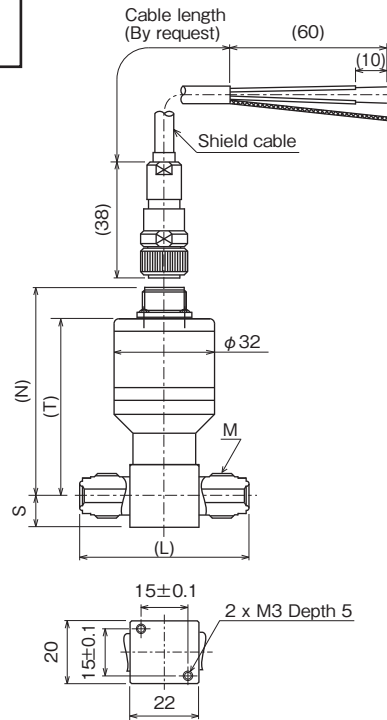
Caution

Under the normal condition, where there is no inflammable gas or liquid which cause the ignition or explosion.

Dimensions 1

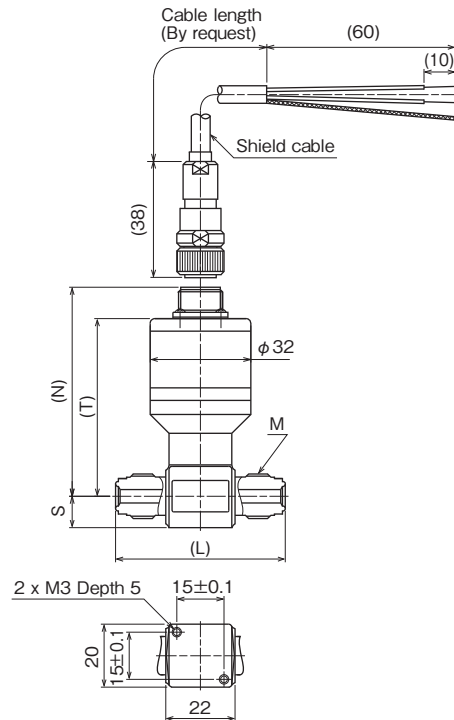
Internal Adjustment
Type T
Male Integrated

UC/BA Grade

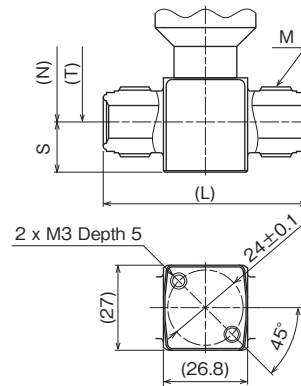


Compatible with 1/4 VCR

EP/GP Grade



Compatible with 1/4 VCR



Compatible with 1/2 (3/8) VCR

Grade	Connection of fitting	Piping DIA.	Screw size M	Dimensions				Model number
				N	T	S	L	
UC	Compatible with VCR Male integrated	1/4	9/16-18UNF	66.5	56.5	10	54	ZT15-136, ZT15-M36

Grade	Connection of fitting	Piping DIA.	Screw size M	Dimensions				Model number
				N	T	S	L	
BA	Compatible with VCR Male integrated	1/4	9/16-18UNF	66.5	56.5	10	54	ZT15-13N, ZT15-M3N

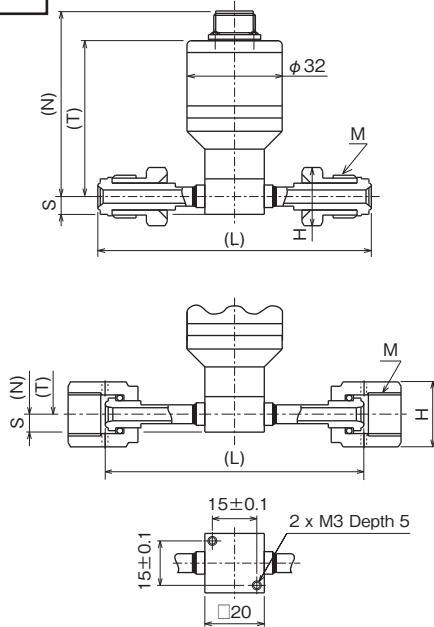
Grade	Connection of fitting	Piping DIA.	Screw size M	Dimensions				Model number
				N	T	S	L	
EP	Compatible with VCR Male integrated	1/4	9/16-18UNF	66.5	56.5	10	54	ZT15-M3E
		1/2 (3/8)	7/8-14UNF	70.5	60.5	16	65	ZT15-M4E

Grade	Connection of fitting	Piping DIA.	Screw size M	Dimensions				Model number
				N	T	S	L	
GP	Compatible with VCR Male integrated	1/4	9/16-18UNF	66.5	56.5	10	54	ZT15-M3G

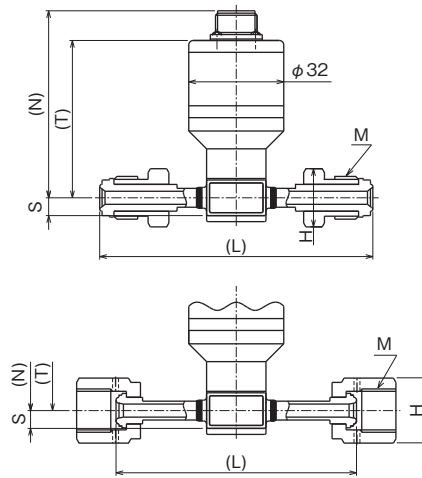
Dimensions 2

Internal Adjustment
Type T
Male nut/Female nut

UC Grade



BA Grade



BA Grade doesn't have screw.

Unit: mm

Grade	Connection of fitting	Piping DIA.	Screw size M	Dimensions					Model number
				N	T	S	H	L	
UC	Compatible with VCR Male nut (TOM JOINT)	1/4	9/16-18UNF	62.5	52.5	6	16 x 18.5 Hex.	90	ZT15-1E6, ZT15-ME6
		3/8	7/8-14UNF	68	58	7	24 x 27.7 Hex.	95	ZT15-1F6, ZT15-MF6
	Compatible with VCR Female nut (SUPER TOMJON)	1/4	9/16-18UNF	62.5	52.5	6	19 x 21.9 Hex.	79	ZT15-1G6, ZT15-MG6
		3/8	7/8-14UNF	68	58	7	27 x 31.2 Hex.	83	ZT15-1H6, ZT15-MH6
	VCR Male nut	1/4	9/16-18UNF	62.5	52.5	6	16 x 18.5 Hex.	86	ZT15-1J6, ZT15-MJ6
		3/8	7/8-14UNF	68	58	7	24 x 27.7 Hex.	90.5	ZT15-1K6, ZT15-MK6
	VCR Female nut (Bearings are not included)	1/4	9/16-18UNF	62.5	52.5	6	19 x 21.9 Hex.	80.8	ZT15-1L6, ZT15-ML6
		3/8	7/8-14UNF	68	58	7	27 x 31.2 Hex.	81.8	ZT15-1M6, ZT15-MM6
	UJR Male nut	1/4	9/16-18UNF	62.5	52.5	6	17 x 19.6 Hex.	87	ZT15-1N6, ZT15-MN6
		3/8	7/8-14UNF	68	58	7	23 x 26.6 Hex.	100	ZT15-1P6, ZT15-MP6
	UJR Female nut (With pure ring)	1/4	9/16-18UNF	62.5	52.5	6	19 x 21.9 Hex.	87	ZT15-1Q6, ZT15-MQ6
		3/8	7/8-14UNF	68	58	7	26 x 30 Hex.	100	ZT15-1R6, ZT15-MR6
	CVC Male nut	1/4	9/16-18UNF	62.5	52.5	6	15.8 x 18.2 Hex.	86	ZT15-1W6, ZT15-MW6
		3/8	7/8-14UNF	68	58	7	23.8 x 27.5 Hex.	90.6	ZT15-1X6, ZT15-MX6
	CVC Female nut (Bearings are not included)	1/4	9/16-18UNF	62.5	52.5	6	19 x 21.9 Hex.	80.8	ZT15-1Y6, ZT15-MY6
		3/8	7/8-14UNF	68	58	7	27 x 31.2 Hex.	82	ZT15-1Z6, ZT15-MZ6

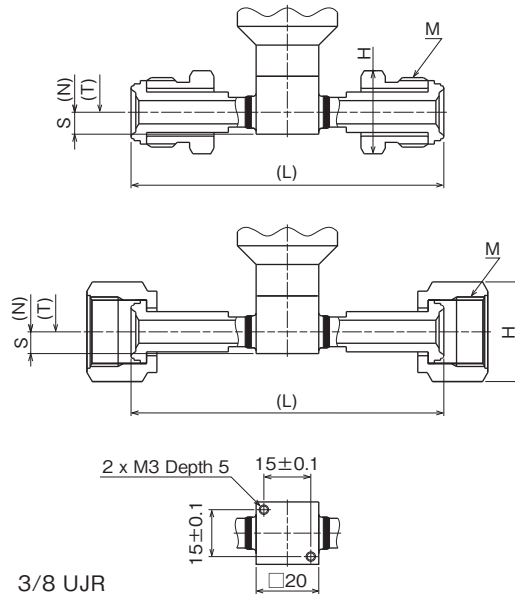
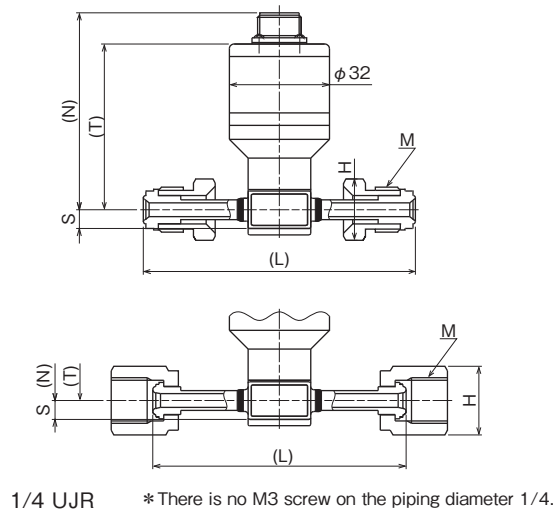
Grade	Connection of fitting	Piping DIA.	Screw size M	Dimensions					Model number
				N	T	S	H	L	
BA	Compatible with VCR Male nut (TOM JOINT)	1/4	9/16-18UNF	63	53	6	16 x 18.5 Hex.	90	ZT15-1EN, ZT15-MEN
	Compatible with VCR Female nut (TOM JOINT Bearings are not included)						19 x 21.9 Hex.	79	ZT15-1GN, ZT15-MGN
	VCR Male nut						16 x 18.5 Hex.	86	ZT15-1JN, ZT15-MJN
	VCR Female nut (Bearings are not included)						19 x 21.9 Hex.	80.8	ZT15-1LN, ZT15-MLN
	UJR Male nut						17 x 19.6 Hex.	92	ZT15-1NN, ZT15-MNN
	UJR Female nut (Without pure ring)						19 x 21.9 Hex.	81	ZT15-1QN, ZT15-MQN
	CVC Male nut						15.8 x 18.2 Hex.	86	ZT15-1WN, ZT15-MWN
	CVC Female nut (Bearings are not included)						19 x 21.9 Hex.	80.8	ZT15-1YN, ZT15-MYN

Dimensions 3

Internal Adjustment
Type T
Male nut/Female nut

EP/GP Grade

Unit: mm



Grade	Connection of fitting	Piping DIA.	Screw size M	Dimensions					Model number
				N	T	S	H	L	
EP	UJR Male nut	1/4	9/16-18UNF	63	53	6	17 x 19.6 Hex.	87	ZT15-MNE
		3/8	7/8-14UNF	68	58	7	23 x 26.6 Hex.	100	ZT15-MPE
	UJR Female nut (Without pure ring)	1/4	9/16-18UNF	63	53	6	19 x 21.9 Hex.	81	ZT15-MQE
		3/8	7/8-14UNF	68	58	7	26 x 30 Hex.	100	ZT15-MRE

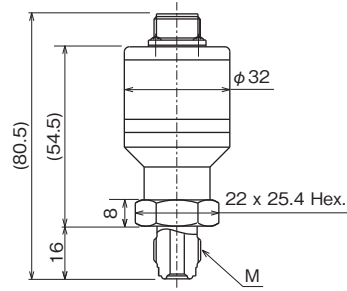
Grade	Connection of fitting	Piping DIA.	Screw size M	Dimensions					Model number
				N	T	S	H	L	
GP	UJR Male nut	1/4	9/16-18UNF	63	53	6	17 x 19.6 Hex.	87	ZT15-MNG
	UJR Female nut (Without pure ring)						19 x 21.9 Hex.	81	ZT15-MQG

Dimensions 4

Internal Adjustment
Type S
Male Integrated

UC/BA/EP/GP Grade Common

Unit: mm



Compatible with 1/4 VCR

Grade	Connection of fitting	Piping DIA.	Screw size M	Model number
UC	Compatible with VCR Male integrated	1/4	9/16-18UNF	ZT15-236, ZT15-N36

Grade	Connection of fitting	Piping DIA.	Screw size M	Model number
BA	Compatible with VCR Male integrated	1/4	9/16-18UNF	ZT15-23N, ZT15-N3N

Grade	Connection of fitting	Piping DIA.	Screw size M	Model number
EP	Compatible with VCR Male integrated	1/4	9/16-18UNF	ZT15-N3E

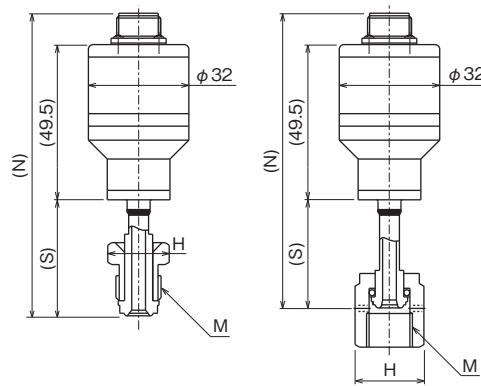
Grade	Connection of fitting	Piping DIA.	Screw size M	Model number
GP	Compatible with VCR Male integrated	1/4	9/16-18UNF	ZT15-N3G

Dimensions 5

Internal Adjustment
Type S
Male nut/Female nut

UC/BA/EP/GP Grade Common

Unit: mm



Grade	Connection of fitting	Piping DIA.	Screw size M	Dimensions			Model number
				N	S	H	
UC	Compatible with VCR Male nut (TOM JOINT)	1/4	9/16-18UNF	90	30.5	16 x 18.5 Hex.	ZT15-2E6, ZT15-NE6
	Compatible with VCR Female nut (SUPER TOMJON)					19 x 21.9 Hex.	ZT15-2G6, ZT15-NG6
	VCR Male nut			93.5	34	16 x 18.5 Hex.	ZT15-2J6, ZT15-NJ6
	VCR Female nut (Bearings are not included)			90.9	31.4	19 x 21.9 Hex.	ZT15-2L6, ZT15-NL6
	UJR Male nut			96.5	37	17 x 19.6 Hex.	ZT15-2N6, ZT15-NN6
	UJR Female nut (With pure ring)			94	34.5	19 x 21.9 Hex.	ZT15-2Q6, ZT15-NQ6
	CVC Male nut			95.5	36	15.8 x 18.2 Hex.	ZT15-2W6, ZT15-NW6
	CVC Female nut (Bearings are not included)			90.9	31.4	19 x 21.9 Hex.	ZT15-2Y6, ZT15-NY6

Grade	Connection of fitting	Piping DIA.	Screw size M	Dimensions			Model number
				N	S	H	
BA	Compatible with VCR Male nut (TOM JOINT)	1/4	9/16-18UNF	90	30.5	16 x 18.5 Hex.	ZT15-2EN, ZT15-NEN
	Compatible with VCR Female nut (TOM JOINT Bearings are not included)					19 x 21.9 Hex.	ZT15-2GN, ZT15-NGN
	VCR Male nut			93.5	34	16 x 18.5 Hex.	ZT15-2JN, ZT15-NJN
	VCR Female nut (Bearings are not included)			81.3	21.8	19 x 21.9 Hex.	ZT15-2LN, ZT15-NLN
	UJR Male nut			96.5	37	17 x 19.6 Hex.	ZT15-2NN, ZT15-NNN
	UJR Female nut (Without pure ring)			81.2	21.7	19 x 21.9 Hex.	ZT15-2QN, ZT15-NQN
	CVC Male nut			95.5	36	15.8 x 18.2 Hex.	ZT15-2WN, ZT15-NWN
	CVC Female nut (Bearings are not included)			90.9	31.4	19 x 21.9 Hex.	ZT15-2YN, ZT15-NYN

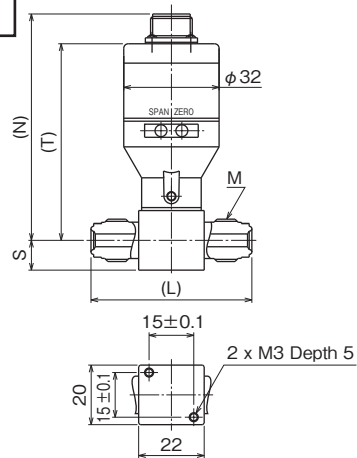
Grade	Connection of fitting	Piping DIA.	Screw size M	Dimensions			Model number
				N	S	H	
EP	UJR Male nut	1/4	9/16-18UNF	94	34.5	17 x 19.6 Hex.	ZT15-NNE
	UJR Female nut (Without pure ring)			91	31.5	19 x 21.9 Hex.	ZT15-NQE

Grade	Connection of fitting	Piping DIA.	Screw size M	Dimensions			Model number
				N	S	H	
GP	UJR Male nut	1/4	9/16-18UNF	94	34.5	17 x 19.6 Hex.	ZT15-NNG
	UJR Female nut (Without pure ring)			91	31.5	19 x 21.9 Hex.	ZT15-NQG

Dimensions 6

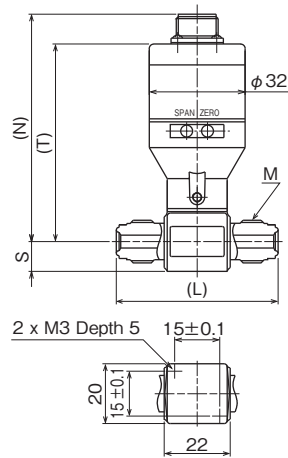
External Adjustment
Type T
Male Integrated

UC/BA Grade

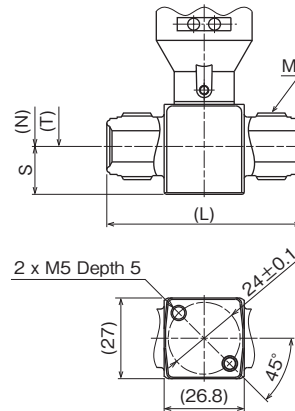


Compatible with 1/4 VCR

EP/GP Grade



Compatible with 1/4 VCR



Compatible with 1/2 (3/8) VCR

Grade	Connection of fitting	Piping DIA.	Screw size M	Dimensions				Model number
				N	T	S	L	
UC	Compatible with VCR Male integrated	1/4	9/16-18UNF	76	66	10	54	ZT15-A36, ZT15-C36

Grade	Connection of fitting	Piping DIA.	Screw size M	Dimensions				Model number
				N	T	S	L	
BA	Compatible with VCR Male integrated	1/4	9/16-18UNF	76	66	10	54	ZT15-A3N, ZT15-C3N

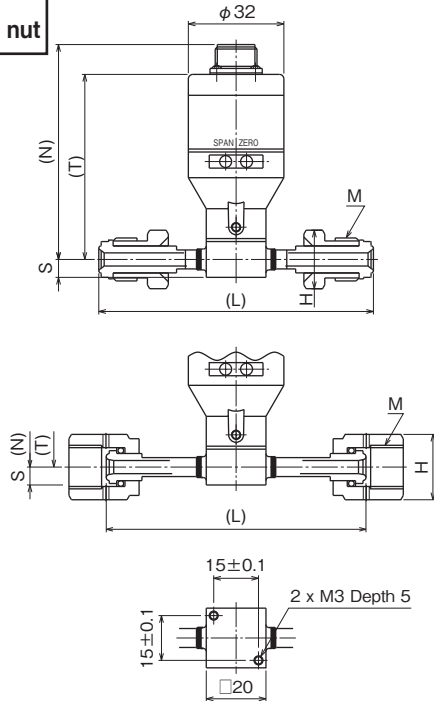
Grade	Connection of fitting	Piping DIA.	Screw size M	Dimensions				Model number
				N	T	S	L	
EP	Compatible with VCR Male integrated	1/4	9/16-18UNF	76	66	10	54	ZT15-C3E
		1/2 (3/8)	7/8-14UNF	80	70	16	65	ZT15-C4E

Grade	Connection of fitting	Piping DIA.	Screw size M	Dimensions				Model number
				N	T	S	L	
GP	Compatible with VCR Male integrated	1/4	9/16-18UNF	76	66	10	54	ZT15-C3G

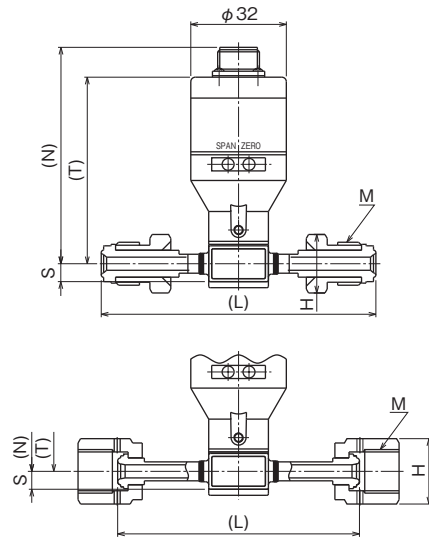
Dimensions 7

External Adjustment
Type T
Male nut/Female nut

UC Grade



BA Grade



BA Grade doesn't have screw.

Unit: mm

Grade	Connection of fitting	Piping DIA.	Screw size M	Dimensions					Model number
				N	T	S	H	L	
UC	Compatible with VCR Male nut (TOM JOINT)	1/4	9/16-18UNF	72	62	6	16 x 18.5 Hex.	90	ZT15-AE6, ZT15-CE6
		3/8	7/8-14UNF	77.5	67.5	7	24 x 27.7 Hex.	95	ZT15-AF6, ZT15-CF6
	Compatible with VCR Female nut (SUPER TOMJON)	1/4	9/16-18UNF	72	62	6	19 x 21.9 Hex.	79	ZT15-AG6, ZT15-CG6
		3/8	7/8-14UNF	77.5	67.5	7	27 x 31.2 Hex.	83	ZT15-AH6, ZT15-CH6
	VCR Male nut	1/4	9/16-18UNF	72	62	6	16 x 18.5 Hex.	86	ZT15-AJ6, ZT15-CJ6
		3/8	7/8-14UNF	77.5	67.5	7	24 x 27.7 Hex.	90.5	ZT15-AK6, ZT15-CK6
	VCR Female nut (Bearings are not included)	1/4	9/16-18UNF	72	62	6	19 x 21.9 Hex.	80.8	ZT15-AL6, ZT15-CL6
		3/8	7/8-14UNF	77.5	67.5	7	27 x 31.2 Hex.	81.8	ZT15-AM6, ZT15-CM6
	UJR Male nut	1/4	9/16-18UNF	72	62	6	17 x 19.6 Hex.	87	ZT15-AN6, ZT15-CN6
		3/8	7/8-14UNF	77.5	67.5	7	23 x 26.6 Hex.	100	ZT15-AP6, ZT15-CP6
	UJR Female nut (With pure ring)	1/4	9/16-18UNF	72	62	6	19 x 21.9 Hex.	87	ZT15-AQ6, ZT15-CQ6
		3/8	7/8-14UNF	77.5	67.5	7	26 x 30 Hex.	100	ZT15-AR6, ZT15-CR6
	CVC Male nut	1/4	9/16-18UNF	72	62	6	15.8 x 18.2 Hex.	86	ZT15-AW6, ZT15-CW6
		3/8	7/8-14UNF	77.5	67.5	7	23.8 x 27.5 Hex.	90.6	ZT15-AX6, ZT15-CX6
	CVC Female nut (Bearings are not included)	1/4	9/16-18UNF	72	62	6	19 x 21.9 Hex.	80.8	ZT15-AY6, ZT15-CY6
		3/8	7/8-14UNF	77.5	67.5	7	27 x 31.2 Hex.	82	ZT15-AZ6, ZT15-CZ6

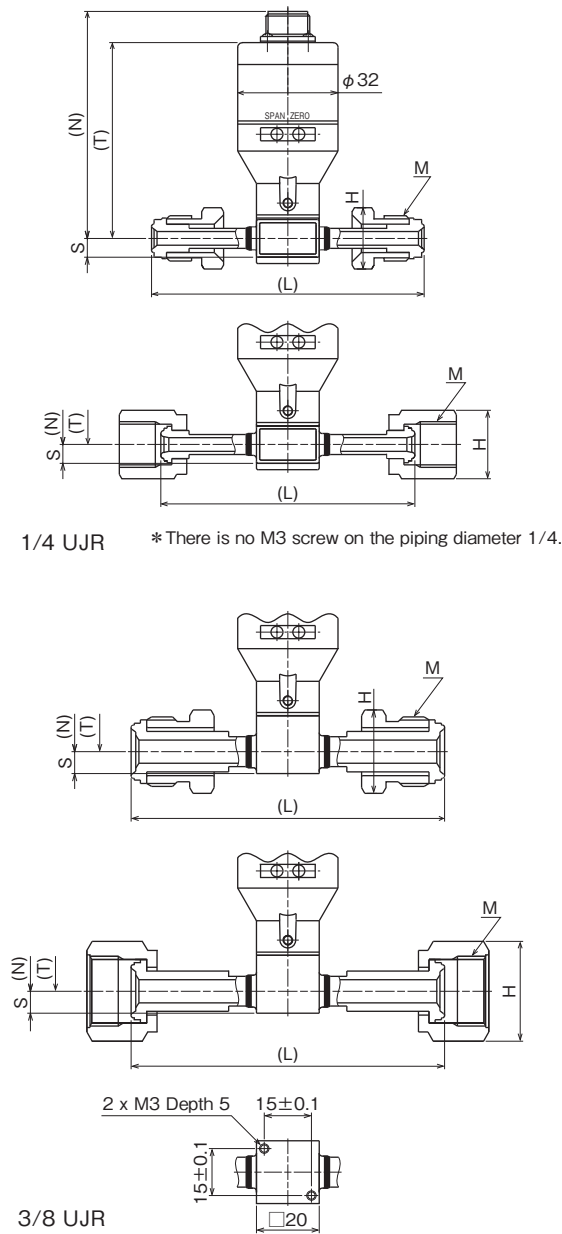
Grade	Connection of fitting	Piping DIA.	Screw size M	Dimensions					Model number
				N	T	S	H	L	
BA	Compatible with VCR Male nut (TOM JOINT)	1/4	9/16-18UNF	72.5	62.5	6	16 x 18.5 Hex.	90	ZT15-AEN, ZT15-CEN
	Compatible with VCR Female nut (TOM JOINT Bearings are not included)						19 x 21.9 Hex.	79	ZT15-AGN, ZT15-CGN
	VCR Male nut						16 x 18.5 Hex.	86	ZT15-AJN, ZT15-CJN
	VCR Female nut (Bearings are not included)						19 x 21.9 Hex.	80.8	ZT15-ALN, ZT15-CLN
	UJR Male nut						17 x 19.6 Hex.	92	ZT15-ANN, ZT15-CNN
	UJR Female nut (Without pure ring)						19 x 21.9 Hex.	81	ZT15-AQN, ZT15-CQN
	CVC Male nut						15.8 x 18.2 Hex.	86	ZT15-AWN, ZT15-CWN
	CVC Female nut (Bearings are not included)						19 x 21.9 Hex.	80.8	ZT15-AYN, ZT15-CYN

Dimensions 8

External Adjustment
Type T
Male nut/Female nut

EP/GP Grade

Unit: mm



Grade	Connection of fitting	Piping DIA.	Screw size M	Dimensions					Model number
				N	T	S	H	L	
EP	UJR Male nut	1/4	9/16-18UNF	72.5	62.5	6	17 x 19.6 Hex.	87	ZT15-CNE
		3/8	7/8-14UNF	77.5	67.5	7	23 x 26.6 Hex.	100	ZT15-CPE
	UJR Female nut (Without pure ring)	1/4	9/16-18UNF	72.5	62.5	6	19 x 21.9 Hex.	81	ZT15-CQE
		3/8	7/8-14UNF	77.5	67.5	7	26 x 30 Hex.	100	ZT15-CRE

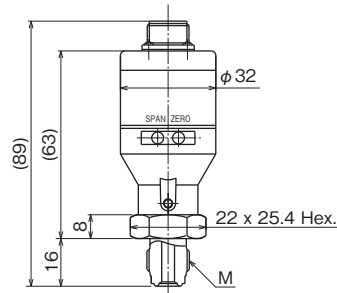
Grade	Connection of fitting	Piping DIA.	Screw size M	Dimensions					Model number
				N	T	S	H	L	
GP	UJR Male nut	1/4	9/16-18UNF	72.5	62.5	6	17 x 19.6 Hex.	87	ZT15-CNG
	UJR Female nut (Without pure ring)						19 x 21.9 Hex.	81	ZT15-CQG

Dimensions 9

External Adjustment
Type S
Male Integrated

UC/BA/EP/GP Grade Common

Unit: mm



Compatible with 1/4 VCR

Grade	Connection of fitting	Piping DIA.	Screw size M	Model number
UC	Compatible with VCR Male integrated	1/4	9/16-18UNF	ZT15-B36, ZT15-D36

Grade	Connection of fitting	Piping DIA.	Screw size M	Model number
BA	Compatible with VCR Male integrated	1/4	9/16-18UNF	ZT15-B3N, ZT15-D3N

Grade	Connection of fitting	Piping DIA.	Screw size M	Model number
EP	Compatible with VCR Male integrated	1/4	9/16-18UNF	ZT15-D3E

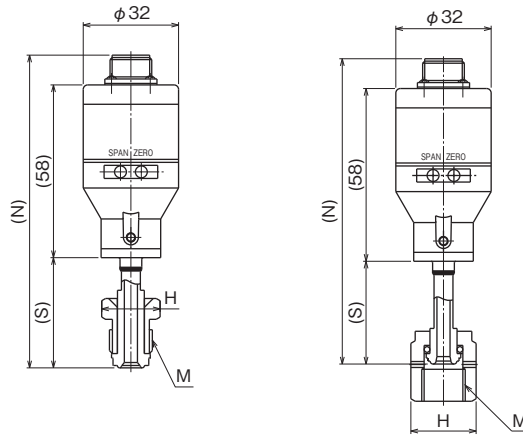
Grade	Connection of fitting	Piping DIA.	Screw size M	Model number
GP	Compatible with VCR Male integrated	1/4	9/16-18UNF	ZT15-D3G

Dimensions 10

External Adjustment
Type S
Male nut/Female nut

UC/BA/EP/GP Grade Common

Unit: mm



Grade	Connection of fitting	Piping DIA.	Screw size M	Dimensions			Model number
				N	S	H	
UC	Compatible with VCR Male nut (TOM JOINT)	1/4	9/16-18UNF	98.5	30.5	16 x 18.5 Hex.	ZT15-BE6, ZT15-DE6
	Compatible with VCR Female nut (SUPER TOMJON)					19 x 21.9 Hex.	ZT15-BG6, ZT15-DG6
	VCR Male nut			102	34	16 x 18.5 Hex.	ZT15-BJ6, ZT15-DJ6
	VCR Female nut (Bearings are not included)			99.4	31.4	19 x 21.9 Hex.	ZT15-BL6, ZT15-DL6
	UJR Male nut			105	37	17 x 19.6 Hex.	ZT15-BN6, ZT15-DN6
	UJR Female nut (With pure ring)			102.5	34.5	19 x 21.9 Hex.	ZT15-BQ6, ZT15-DQ6
	CVC Male nut			104	36	15.8 x 18.2 Hex.	ZT15-BW6, ZT15-DW6
	CVC Female nut (Bearings are not included)			99.4	31.4	19 x 21.9 Hex.	ZT15-BY6, ZT15-DY6

Grade	Connection of fitting	Piping DIA.	Screw size M	Dimensions			Model number
				N	S	H	
BA	Compatible with VCR Male nut (TOM JOINT)	1/4	9/16-18UNF	98.5	30.5	16 x 18.5 Hex.	ZT15-BEN, ZT15-DEN
	Compatible with VCR Female nut (TOM JOINT Bearings are not included)					19 x 21.9 Hex.	ZT15-BGN, ZT15-DGN
	VCR Male nut			102	34	16 x 18.5 Hex.	ZT15-BJN, ZT15-DJN
	VCR Female nut (Bearings are not included)			89.8	21.8	19 x 21.9 Hex.	ZT15-BLN, ZT15-DLN
	UJR Male nut			105	37	17 x 19.6 Hex.	ZT15-BNN, ZT15-DNN
	UJR Female nut (Without pure ring)			89.7	21.7	19 x 21.9 Hex.	ZT15-BQN, ZT15-DQN
	CVC Male nut			104	36	15.8 x 18.2 Hex.	ZT15-BWN, ZT15-DWN
	CVC Female nut (Bearings are not included)			99.4	31.4	19 x 21.9 Hex.	ZT15-BYN, ZT15-DYN

Grade	Connection of fitting	Piping DIA.	Screw size M	Dimensions			Model number
				N	S	H	
EP	UJR Male nut	1/4	9/16-18UNF	102.5	34.5	17 x 19.6 Hex.	ZT15-DNE
	UJR Female nut (Without pure ring)			99.5	31.5	19 x 21.9 Hex.	ZT15-DQE

Grade	Connection of fitting	Piping DIA.	Screw size M	Dimensions			Model number
				N	S	H	
GP	UJR Male nut	1/4	9/16-18UNF	102.5	34.5	17 x 19.6 Hex.	ZT15-DNG
	UJR Female nut (Without pure ring)			99.5	31.5	19 x 21.9 Hex.	ZT15-DQG

Model number configuration

Please specify the model number, each specs and the range for ordering.

Model																			
Z T 1 5		<div style="display: flex; justify-content: space-around; align-items: center;"> <div style="border: 1px solid black; padding: 2px 5px;">6</div> <div style="border: 1px solid black; padding: 2px 5px;">X</div> <div style="border: 1px solid black; padding: 2px 5px;">X</div> <div style="border: 1px solid black; padding: 2px 5px;">X</div> <div style="border: 1px solid black; padding: 2px 5px;">X</div> <div style="border: 1px solid black; padding: 2px 5px;">X</div> <div style="border: 1px solid black; padding: 2px 5px;">X</div> </div>																	
Pressure Transmitter UC Grade		①	②	③	④	⑤	⑥	⑦	⑧	⑨	⑩	⑪	⑫	⑬	⑭	⑮			
Model number		Selective spec.				Additional spec. (Option)													
① Mounting *1		C	Type T, External adjustment connector type, CE marking compliant products																
		D	Type S, External adjustment connector type, CE marking compliant products																
		M	Type T, Internal adjustment connector type, CE marking compliant products																
		N	Type S, Internal adjustment connector type, CE marking compliant products																
② Connection of fitting		3	1/4	Compatible with VCR Male integrated											Type S	Type T			
		E	1/4	Compatible with VCR Male nut (TOM JOINT)											○	○			
		F	3/8												×	○			
		G	1/4	Compatible with VCR Female nut (SUPER TOM JON)											○	○			
		H	3/8												×	○			
		J	1/4	VCR Male nut											○	○			
		K	3/8												×	○			
		L	1/4	VCR Female nut (Bearings are not included)											○	○			
		M	3/8												×	○			
		N	1/4	UJR Male nut											○	○			
		P	3/8												×	○			
		Q	1/4	UJR Female nut (With pure ring)											○	○			
		R	3/8												×	○			
		W	1/4	CVC Male nut											○	○			
		X	3/8												×	○			
		Y	1/4	CVC Female nut (Bearings are not included)											○	○			
		Z	3/8												×	○			
		③ Grade, Gas contact parts materials *2		6	UC Grade • Pressure sensor: Co-Ni alloy (All welding) • Fitting: SUS316L														
		④ Pressure range		C	-0.1 to 0.3MPa														
D	-0.1 to 0.5MPa																		
E	-0.1 to 1MPa																		
F	-0.1 to 2MPa																		
1	0 to 0.3MPa																		
2	0 to 0.5MPa																		
3	0 to 1MPa																		
4	0 to 2MPa																		
5	0 to 3.5MPa																		
⑤ Accuracy		5	±0.5%F.S. (0.5MPa range or greater can be specified)																
		7	±1.0%F.S.																
		⑥ Power source		1	24V DC±10%														
				6	12V DC±10% (3-wire system only)														
		⑦ Output		1	4 to 20 mA DC (2-wire system)														
				8	1 to 5V DC (3-wire system)														
		⑧ Adjustment cable specification (A heat resistant shield cable)		0	Nil														
				1	Cable length: 1 m														
2	Cable length: 2 m																		
3	Cable length: 3 m (Standard)																		
5	Cable length: 5 m																		
9	Others length specification																		

Please specify the pressure range and units separately besides selection of range code.

* 1 ZT15-1□□, ZT15-2□□, ZT15-A□□, and ZT15-B□□ are CE marking non-compliant products.

* 2 For UC Grade, the pressure transmitter can be manufactured in DOUBLE MELT material by request. Please contact us.

⑮ Document

0	Nil
1	Required (Please specify the desired documents separately.) Submission drawings, instruction manual, inspection procedure, mill sheet, test report (1 pc 1 copy), inspection / traceability certificate, strength calculation, attended inspection

* Specify "X" if there is no specification item.

Pressure Transmitters, UC Grade

CE marking non-compliant product

Model number configuration

Please specify the model number, each specs and the range for ordering.

Model																
Z T 1 5		<div style="display: flex; justify-content: space-around; align-items: center;"> <div style="border: 1px solid black; padding: 2px 10px;">6</div> <div style="border: 1px solid black; padding: 2px 10px;"> </div> <div style="border: 1px solid black; padding: 2px 10px;"> </div> <div style="border: 1px solid black; padding: 2px 10px;"> </div> <div style="border: 1px solid black; padding: 2px 10px;"> </div> <div style="border: 1px solid black; padding: 2px 10px;"> </div> <div style="border: 1px solid black; padding: 2px 10px;"> </div> <div style="border: 1px solid black; padding: 2px 10px;"> </div> <div style="border: 1px solid black; padding: 2px 10px;"> </div> <div style="border: 1px solid black; padding: 2px 10px;"> </div> <div style="border: 1px solid black; padding: 2px 10px;"> </div> <div style="border: 1px solid black; padding: 2px 10px;"> </div> <div style="border: 1px solid black; padding: 2px 10px;"> </div> <div style="border: 1px solid black; padding: 2px 10px;"> </div> <div style="border: 1px solid black; padding: 2px 10px;"> </div> </div>														
Pressure transmitter UC Grade (CE marking non-compliant product)																
Model number		Selective spec. Additional spec. (Option)														
① Mounting *1	<div style="display: flex; justify-content: space-between;"> <div style="border: 1px solid black; padding: 2px 5px;">1</div> <div style="border: 1px solid black; padding: 2px 5px;">2</div> <div style="border: 1px solid black; padding: 2px 5px;">A</div> <div style="border: 1px solid black; padding: 2px 5px;">B</div> </div>	<div style="display: flex; justify-content: space-between;"> <div style="width: 30%;">Type T, Internal adjustment connector type</div> <div style="width: 30%;">Type S, Internal adjustment connector type</div> <div style="width: 30%;">Type T, External adjustment connector type</div> <div style="width: 30%;">Type S, External adjustment connector type</div> </div>														
② Connection of fitting	<div style="display: flex; justify-content: space-between;"> <div style="border: 1px solid black; padding: 2px 5px;">3</div> <div style="border: 1px solid black; padding: 2px 5px;">E</div> <div style="border: 1px solid black; padding: 2px 5px;">F</div> <div style="border: 1px solid black; padding: 2px 5px;">G</div> <div style="border: 1px solid black; padding: 2px 5px;">H</div> <div style="border: 1px solid black; padding: 2px 5px;">J</div> <div style="border: 1px solid black; padding: 2px 5px;">K</div> <div style="border: 1px solid black; padding: 2px 5px;">L</div> <div style="border: 1px solid black; padding: 2px 5px;">M</div> <div style="border: 1px solid black; padding: 2px 5px;">N</div> <div style="border: 1px solid black; padding: 2px 5px;">P</div> <div style="border: 1px solid black; padding: 2px 5px;">Q</div> <div style="border: 1px solid black; padding: 2px 5px;">R</div> <div style="border: 1px solid black; padding: 2px 5px;">W</div> <div style="border: 1px solid black; padding: 2px 5px;">X</div> <div style="border: 1px solid black; padding: 2px 5px;">Y</div> <div style="border: 1px solid black; padding: 2px 5px;">Z</div> </div>	<div style="display: flex; justify-content: space-between;"> <div style="width: 30%;">1/4</div> <div style="width: 30%;">1/4</div> <div style="width: 30%;">3/8</div> <div style="width: 30%;">1/4</div> <div style="width: 30%;">3/8</div> <div style="width: 30%;">1/4</div> <div style="width: 30%;">3/8</div> <div style="width: 30%;">1/4</div> <div style="width: 30%;">3/8</div> <div style="width: 30%;">1/4</div> <div style="width: 30%;">3/8</div> <div style="width: 30%;">1/4</div> <div style="width: 30%;">3/8</div> <div style="width: 30%;">1/4</div> <div style="width: 30%;">3/8</div> <div style="width: 30%;">1/4</div> <div style="width: 30%;">3/8</div> </div>														
		<div style="display: flex; justify-content: space-between;"> <div style="width: 30%;">Compatible with VCR Male integrated</div> <div style="width: 30%;">Compatible with VCR Male nut (TOM JOINT)</div> <div style="width: 30%;">Compatible with VCR Female nut (SUPER TOM JON)</div> <div style="width: 30%;">VCR Male nut</div> <div style="width: 30%;">VCR Female nut (Bearings are not included)</div> <div style="width: 30%;">UJR Male nut</div> <div style="width: 30%;">UJR Female nut (With pure ring)</div> <div style="width: 30%;">CVC Male nut</div> <div style="width: 30%;">CVC Female nut (Bearings are not included)</div> </div>														
③ Grade, Gas contact parts materials *2	6	<div style="display: flex; justify-content: space-between;"> <div style="width: 30%;">UC Grade</div> <div style="width: 30%;">Pressure sensor: Co-Ni alloy (All welding)</div> <div style="width: 30%;">Fitting: SUS316L</div> </div>														
④ Pressure range	<div style="display: flex; justify-content: space-between;"> <div style="border: 1px solid black; padding: 2px 5px;">C</div> <div style="border: 1px solid black; padding: 2px 5px;">D</div> <div style="border: 1px solid black; padding: 2px 5px;">E</div> <div style="border: 1px solid black; padding: 2px 5px;">F</div> <div style="border: 1px solid black; padding: 2px 5px;">1</div> <div style="border: 1px solid black; padding: 2px 5px;">2</div> <div style="border: 1px solid black; padding: 2px 5px;">3</div> <div style="border: 1px solid black; padding: 2px 5px;">4</div> <div style="border: 1px solid black; padding: 2px 5px;">5</div> <div style="border: 1px solid black; padding: 2px 5px;">6</div> <div style="border: 1px solid black; padding: 2px 5px;">7</div> <div style="border: 1px solid black; padding: 2px 5px;">8</div> </div>	<div style="display: flex; justify-content: space-between;"> <div style="width: 30%;">-0.1 to 0.3MPa</div> <div style="width: 30%;">-0.1 to 0.5MPa</div> <div style="width: 30%;">-0.1 to 1MPa</div> <div style="width: 30%;">-0.1 to 2MPa</div> <div style="width: 30%;">0 to 0.3MPa</div> <div style="width: 30%;">0 to 0.5MPa</div> <div style="width: 30%;">0 to 1MPa</div> <div style="width: 30%;">0 to 2MPa</div> <div style="width: 30%;">0 to 3.5MPa</div> <div style="width: 30%;">0 to 5MPa</div> <div style="width: 30%;">0 to 10MPa</div> <div style="width: 30%;">0 to 20MPa</div> </div>														
⑤ Accuracy	<div style="display: flex; justify-content: space-between;"> <div style="border: 1px solid black; padding: 2px 5px;">5</div> <div style="border: 1px solid black; padding: 2px 5px;">7</div> </div>	<div style="display: flex; justify-content: space-between;"> <div style="width: 30%;">±0.5%F.S. (0.5MPa range or greater can be specified)</div> <div style="width: 30%;">±1.0%F.S.</div> </div>														
⑥ Power source	<div style="display: flex; justify-content: space-between;"> <div style="border: 1px solid black; padding: 2px 5px;">1</div> <div style="border: 1px solid black; padding: 2px 5px;">6</div> </div>	<div style="display: flex; justify-content: space-between;"> <div style="width: 30%;">24V DC±10%</div> <div style="width: 30%;">12V DC±10% (3-wire system only)</div> </div>														
⑦ Output	<div style="display: flex; justify-content: space-between;"> <div style="border: 1px solid black; padding: 2px 5px;">1</div> <div style="border: 1px solid black; padding: 2px 5px;">8</div> </div>	<div style="display: flex; justify-content: space-between;"> <div style="width: 30%;">4 to 20 mA DC (2-wire system)</div> <div style="width: 30%;">1 to 5V DC (3-wire system)</div> </div>														
⑧ Adjustment cable specification (A heat resistant shield cable)	<div style="display: flex; justify-content: space-between;"> <div style="border: 1px solid black; padding: 2px 5px;">0</div> <div style="border: 1px solid black; padding: 2px 5px;">1</div> <div style="border: 1px solid black; padding: 2px 5px;">2</div> <div style="border: 1px solid black; padding: 2px 5px;">3</div> <div style="border: 1px solid black; padding: 2px 5px;">5</div> <div style="border: 1px solid black; padding: 2px 5px;">9</div> </div>	<div style="display: flex; justify-content: space-between;"> <div style="width: 30%;">Nil</div> <div style="width: 30%;">Cable length: 1 m</div> <div style="width: 30%;">Cable length: 2 m</div> <div style="width: 30%;">Cable length: 3 m (Standard)</div> <div style="width: 30%;">Cable length: 5 m</div> <div style="width: 30%;">Others length specification</div> </div>														

*1 ZT15-1□□, ZT15-2□□, ZT15-A□□, and ZT15-B□□ are CE marking non-compliant products.

*2 For UC Grade, the pressure transmitter can be manufactured in DOUBLE MELT material by request. Please contact us.

⑮ Document

0	Nil
1	Required (Please specify the desired documents separately.) Submission drawings, instruction manual, inspection procedure, mill sheet, test report (1 pc 1 copy), inspection / traceability certificate, strength calculation, attended inspection

* Specify "X" if there is no specification item.

Model number configuration

Please specify the model number, each specs and the range for ordering.

Model																
Z T 1 5																
Pressure Transmitter BA Grade																
		①	②	③	④	⑤	⑥	⑦	⑧	⑨	⑩	⑪	⑫	⑬	⑭	⑮
Model number					Selective spec.			Additional spec. (Option)								
① Mounting *1	C	Type T, External adjustment connector type, CE marking compliant products														
	D	Type S, External adjustment connector type, CE marking compliant products														
	M	Type T, Internal adjustment connector type, CE marking compliant products														
	N	Type S, Internal adjustment connector type, CE marking compliant products														
② Connection of fitting	3	1/4	Compatible with VCR Male integrated													
	E	1/4	Compatible with VCR Male nut (TOM JOINT)													
	G	1/4	Compatible with VCR Female nut (TOM JOINT)													
	J	1/4	VCR Male nut													
	L	1/4	VCR Female nut (Bearings are not included)													
	N	1/4	UJR Male nut													
	Q	1/4	UJR Female nut (Without pure ring)													
	W	1/4	CVC Male nut													
	Y	1/4	CVC Female nut (Bearings are not included)													
③ Grade, Gas contact parts materials	N	BA Grade • Pressure sensor: Co-Ni alloy (All welding) • Fitting: SUS316L														
④ Pressure range	C	-0.1 to 0.3MPa														
	D	-0.1 to 0.5MPa														
	E	-0.1 to 1MPa														
	F	-0.1 to 2MPa														
	1	0 to 0.3MPa														
	2	0 to 0.5MPa														
	3	0 to 1MPa														
	4	0 to 2MPa														
	5	0 to 3.5MPa														
	6	0 to 5MPa														
	7	0 to 10MPa														
	8	0 to 20MPa														
⑤ Accuracy	5	±0.5%F.S. (0.5MPa range or greater can be specified)														
	7	±1.0%F.S.														
⑥ Power source	1	24V DC±10%														
	6	12V DC±10% (3-wire system only)														
⑦ Output	1	4 to 20 mA DC (2-wire system)														
	8	1 to 5V DC (3-wire system)														
⑧ Adjustment cable specification (A heat resistant shield cable)	0	Nil														
	1	Cable length: 1 m														
	2	Cable length: 2 m														
	3	Cable length: 3 m (Standard)														
	5	Cable length: 5 m														
⑮ Document	0	Nil														
	1	Required (Please specify the desired documents separately.) Submission drawings, instruction manual, inspection procedure, mill sheet, test report (1 pc 1 copy), inspection / traceability certificate, strength calculation, attended inspection														

Please specify the pressure range and units separately besides selection of range code.

* 1 ZT15-1□□, ZT15-2□□, ZT15-A□□, and ZT15-B□□ are CE marking non-compliant products.

* Specify "X" if there is no specification item.

Pressure Transmitters, BA Grade

CE marking non-compliant product

Model number configuration

Please specify the model number, each specs and the range for ordering.

Model																
Z T 1 5		<div style="display: flex; justify-content: space-around; align-items: center;"> <div style="border: 1px solid black; padding: 2px 10px;">N</div> <div style="display: flex; gap: 5px;"> <div style="border: 1px solid black; width: 20px; height: 20px;"></div> <div style="border: 1px solid black; width: 20px; height: 20px;"></div> <div style="border: 1px solid black; width: 20px; height: 20px;"></div> <div style="border: 1px solid black; width: 20px; height: 20px;"></div> <div style="border: 1px solid black; width: 20px; height: 20px;"></div> <div style="border: 1px solid black; width: 20px; height: 20px;"></div> <div style="border: 1px solid black; width: 20px; height: 20px;"></div> <div style="border: 1px solid black; width: 20px; height: 20px;"></div> <div style="border: 1px solid black; width: 20px; height: 20px;"></div> <div style="border: 1px solid black; width: 20px; height: 20px;"></div> <div style="border: 1px solid black; width: 20px; height: 20px;"></div> <div style="border: 1px solid black; width: 20px; height: 20px;"></div> <div style="border: 1px solid black; width: 20px; height: 20px;"></div> <div style="border: 1px solid black; width: 20px; height: 20px;"></div> <div style="border: 1px solid black; width: 20px; height: 20px;"></div> </div> </div>														
Pressure transmitter BA Grade (CE marking non-compliant product)																
Model number		Selective spec.					Additional spec. (Option)									
① Mounting *1	1	Type T, Internal adjustment connector type														
	2	Type S, Internal adjustment connector type														
② Connection of fitting	A	Type T, External adjustment connector type														
	B	Type S, External adjustment connector type														
	3	1/4	Compatible with VCR Male integrated													
	E	1/4	Compatible with VCR Male nut (TOM JOINT)													
③ Grade, Gas contact parts materials	G	1/4	Compatible with VCR Female nut (TOM JOINT)													
	J	1/4	VCR Male nut													
	L	1/4	VCR Female nut (Bearings are not included)													
	N	1/4	UJR Male nut													
	Q	1/4	UJR Female nut (Without pure ring)													
	W	1/4	CVC Male nut													
	Y	1/4	CVC Female nut (Bearings are not included)													
	N	BA Grade • Pressure sensor: Co-Ni alloy (All welding) • Fitting: SUS316L														
④ Pressure range	C	-0.1 to 0.3MPa														
	D	-0.1 to 0.5MPa														
	E	-0.1 to 1MPa														
	F	-0.1 to 2MPa														
	1	0 to 0.3MPa														
	2	0 to 0.5MPa														
	3	0 to 1MPa														
	4	0 to 2MPa														
	5	0 to 3.5MPa														
	6	0 to 5MPa														
⑤ Accuracy	7	±1.0%F.S.														
	5	±0.5%F.S. (0.5MPa range or greater can be specified)														
⑥ Power source	1	24V DC±10%														
	6	12V DC±10% (3-wire system only)														
⑦ Output	1	4 to 20 mA DC (2-wire system)														
	8	1 to 5V DC (3-wire system)														
⑧ Adjustment cable specification (A heat resistant shield cable)	0	Nil														
	1	Cable length: 1 m														
	2	Cable length: 2 m														
	3	Cable length: 3 m (Standard)														
	5	Cable length: 5 m														
⑨ Others length specification	9	Others length specification														
	0	Nil														
⑩ Document	1	Required (Please specify the desired documents separately.) Submission drawings, instruction manual, inspection procedure, mill sheet, test report (1 pc 1 copy), inspection / traceability certificate, strength calculation, attended inspection														
	0	Nil														

Please specify the pressure range and units separately besides selection of range code.

* 1 ZT15-1□□, ZT15-2□□, ZT15-A□□, and ZT15-B□□ are CE marking non-compliant products.

* Specify "X" if there is no specification item.

Model number configuration

Please specify the model number, each specs and the range for ordering.

Model																
Z T 1 5																
Pressure Transmitter EP Grade																
		①	②	③	④	⑤	⑥	⑦	⑧	⑨	⑩	⑪	⑫	⑬	⑭	⑮
				E						×	×	×	×	×	×	
Model number		Selective spec.				Additional spec. (Option)										
①	Mounting	C	Type T, External adjustment connector type, CE marking compliant products													
		D	Type S, External adjustment connector type, CE marking compliant products													
		M	Type T, Internal adjustment connector type, CE marking compliant products													
		N	Type S, Internal adjustment connector type, CE marking compliant products													
②	Connection of fitting	3	1/4	Compatible with VCR Male integrated										Type S	Type T	
		4	1/2 (3/8)	Compatible with VCR Male integrated										×	○	
		N	1/4	UJR Male nut										○	○	
		P	3/8											×	○	
		Q	1/4	UJR Female nut (Without pure ring)										○	○	
		R	3/8											×	○	
③	Grade, Gas contact parts materials	E	EP Grade • Pressure sensor: SUS316L (All welding) • Fitting: SUS316L													
④	Pressure range	C	-0.1 to 0.3MPa													
		D	-0.1 to 0.5MPa													
		E	-0.1 to 1MPa													
		F	-0.1 to 2MPa													
		1	0 to 0.3MPa													
		2	0 to 0.5MPa													
		3	0 to 1MPa													
		4	0 to 2MPa													
		5	0 to 3.5MPa													
		6	0 to 5MPa													
		7	0 to 10MPa													
		8	0 to 20MPa													
⑤	Accuracy	5	±0.5%F.S. (0.5MPa range or greater can be specified)													
		7	±1.0%F.S.													
⑥	Power source	1	24V DC±10%													
		6	12V DC±10% (3-wire system only)													
⑦	Output	1	4 to 20 mA DC (2-wire system)													
		8	1 to 5V DC (3-wire system)													
⑧	Adjustment cable specification (A heat resistant shield cable)	0	Nil													
		1	Cable length: 1 m													
		2	Cable length: 2 m													
		3	Cable length: 3 m (Standard)													
		5	Cable length: 5 m													
		9	Others length specification													
⑮	Document	0	Nil													
		1	Required (Please specify the desired documents separately.) Submission drawings, instruction manual, inspection procedure, mill sheet, test report (1 pc 1 copy), inspection / traceability certificate, strength calculation, attended inspection													

* Specify "X" if there is no specification item.

Model number configuration

Please specify the model number, each specs and the range for ordering.

Model																
Z T 1 5																
Pressure Transmitter GP Grade																
		①	②	③	④	⑤	⑥	⑦	⑧	⑨	⑩	⑪	⑫	⑬	⑭	⑮
				G						×	×	×	×	×	×	
Model number				Selective spec.		Additional spec. (Option)										
① Mounting	C	Type T, External adjustment connector type, CE marking compliant products														
	D	Type S, External adjustment connector type, CE marking compliant products														
	M	Type T, Internal adjustment connector type, CE marking compliant products														
	N	Type S, Internal adjustment connector type, CE marking compliant products														
② Connection of fitting	3	1/4	Compatible with VCR Male integrated													
	N	1/4	UJR Male nut													
	Q	1/4	UJR Female nut (Without pure ring)													
③ Grade, Gas contact parts materials	G	GP Grade • Pressure sensor: SUS316L (All welding) • Fitting: SUS316L														
④ Pressure range	C	-0.1 to 0.3MPa														
	D	-0.1 to 0.5MPa														
	E	-0.1 to 1MPa														
	F	-0.1 to 2MPa														
	1	0 to 0.3MPa														
	2	0 to 0.5MPa														
	3	0 to 1MPa														
	4	0 to 2MPa														
	5	0 to 3.5MPa														
⑤ Accuracy	5	±0.5%F.S. (0.5MPa range or greater can be specified)														
	7	±1.0%F.S.														
⑥ Power source	1	24V DC±10%														
	6	12V DC±10% (3-wire system only)														
⑦ Output	1	4 to 20 mA DC (2-wire system)														
	8	1 to 5V DC (3-wire system)														
⑧ Adjustment cable specification (A heat resistant shield cable)	0	Nil														
	1	Cable length: 1 m														
	2	Cable length: 2 m														
	3	Cable length: 3 m (Standard)														
	5	Cable length: 5 m														
⑮ Document	0	Nil														
	1	Required (Please specify the desired documents separately.) Submission drawings, instruction manual, inspection procedure, mill sheet, test report (1 pc 1 copy), inspection / traceability certificate, strength calculation, attended inspection														

Please specify the pressure range and units separately besides selection of range code.