

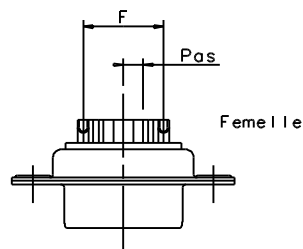
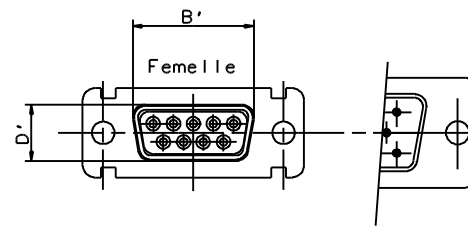
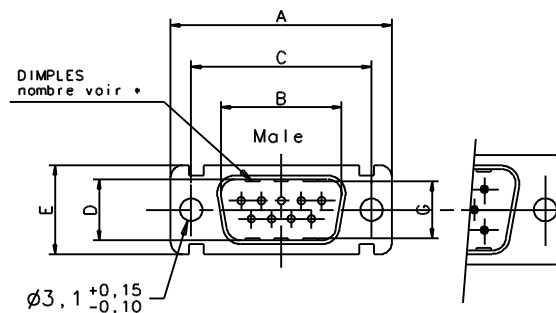
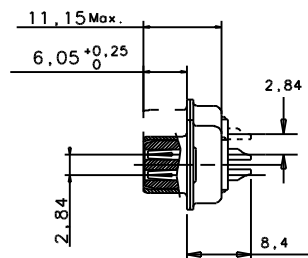
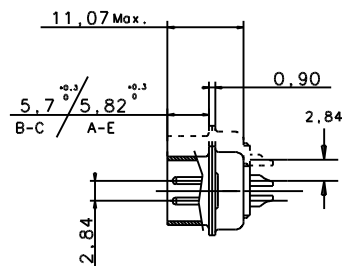
17D-80

DATE DU TIRAGE

N CLIENT

N OUTIL

N ETUDE



Taille boîtier	A	B'	B	C	D'	D	E	F ±0,05	Pas	G	*
E	11,07	11,15	11,07	11,15	11,07	11,15	11,07	11,15	11,07	11,15	2x3
A	11,07	11,15	11,07	11,15	11,07	11,15	11,07	11,15	11,07	11,15	2x5
B	11,07	11,15	11,07	11,15	11,07	11,15	11,07	11,15	11,07	11,15	2x8
C	11,07	11,15	11,07	11,15	11,07	11,15	11,07	11,15	11,07	11,15	2x12
D	11,07	11,15	11,07	11,15	11,07	11,15	11,07	11,15	11,07	11,15	2x12

TECHNICAL DATA

" D " SUBMINIATURE CONNECTORS

SHELL : Material : Steel
Plating : 100µ" Tin over 78µ" Nickel

BODY : Glass filled thermoplastic
Flame retardant to UL 94 V-0
Colour : black

CONTACTS Material for sockets : Brass
Material for pins : Brass
Plating of mating area : 8µ" Gold over 78µ" Nickel

ELECTRICAL Voltage rating 300 V Rms to 50Hz
Nominal current 7,5 A (size20)
Voltage proof >1000 V Rms to 50 Hz
Contact resistance <8,5m Ohms
Insulator resistance >5000 M Ohms

CLIMATIC Temperature range -55°C +85°C
Damp heart 21 days (40°C - 95 % RH)

MECHANICAL Insertion force per contact 1,2N < F < 2,5 N
Extraction force per contact 0,4 N mini
Mating and unmating force size

E 30N maxi 3,5N mini
A 50N maxi 4,5N mini
B 83N maxi 8,0N mini
C 123N maxi 11N mini
D 166N maxi 14,5N mini

(With or without dimples)

MARKING Amphenol - ... (serie number)
Commercial reference
Manufacturing date

*** * ** *

L77D Tinned shells for receptacle
RoHS version
L717D Tinned shells with dimples
for plug, RoHS version

Shell size :
E-A-B-C-D

Mounting type

Configuration :
09-15-25-37-50

contact type :
Solder pot

Contact type : S = female
P = male

Amphenol Socapex				Usine de Dole	
Echelle: 1:5				PLAN NOTICE	
IND. MODIFICATION DATE				DOSSIER:	
N SERIE 017F				DESIGNATION a souder / solder pot 17D+++++	

COMMUNICATION ET UTILISATION INTERDITES SAUF AUTORISATION

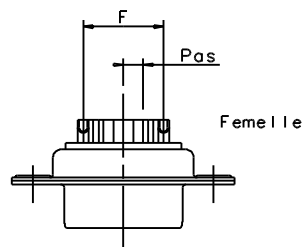
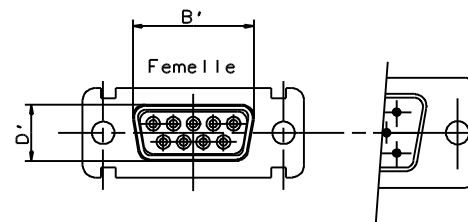
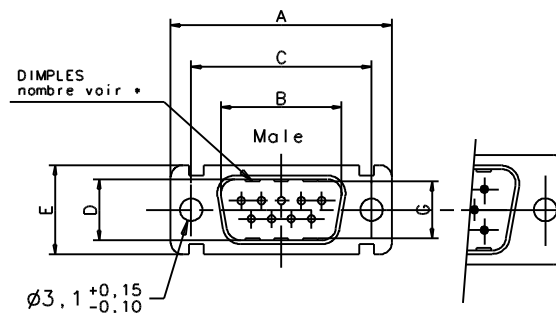
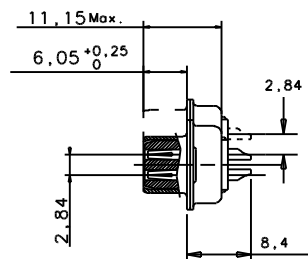
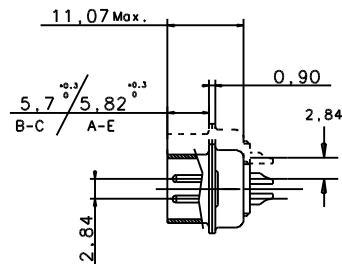
17D-80

DATE DU TIRAGE

N CLIENT

N OUTIL

N ETUDE



Taille boîtier	A	B'	B	C	D'	D	E	F ±0,05	Pas	G	*
E	11,07	11,15	11,07	11,15	11,07	11,15	11,07	11,15	11,07	11,15	2x3
A	19,20	19,20	19,20	19,20	19,20	19,20	19,20	19,20	19,20	19,20	2x5
B	33,12	33,12	33,12	33,12	33,12	33,12	33,12	33,12	33,12	33,12	2x8
C	49,68	49,68	49,68	49,68	49,68	49,68	49,68	49,68	49,68	49,68	2x12
D	44,20	44,20	44,20	44,20	44,20	44,20	44,20	44,20	44,20	44,20	2x12

TECHNICAL DATA

" D " SUBMINIATURE CONNECTORS

SHELL : Material : Steel
Plating : 100µ" Tin over 78µ" Nickel

BODY : Glass filled thermoplastic
Flame retardant to UL 94 V-0
Colour : black

CONTACTS Material for sockets : Brass
Material for pins : Brass
Plating of mating area : 8µ" minimum Gold over 78µ" Nickel

ELECTRICAL Voltage rating 300 V Rms to 50Hz
Nominal current 7,5 A (size20)
Voltage proof >1000 V Rms to 50 Hz
Contact resistance <8,5m Ohms
Insulator resistance >5000 M Ohms

CLIMATIC Temperature range -55°C +85°C
Damp heart 21 days (40°C - 95 % RH)

MECHANICAL Insertion force per contact 1,2N < F < 2,5 N
Extraction force per contact 0,4 N mini
Mating and unmating force size

E 30N maxi 3,5N mini
A 50N maxi 4,5N mini
B 83N maxi 8,0N mini
C 123N maxi 11N mini
D 166N maxi 14,5N mini

(With or without dimples)

MARKING Amphenol - ... (serie number)
Commercial reference
Manufacturing date

*** * ** *

L77D Tinned shells for receptacle
RoHS version
L717D Tinned shells with dimples
for plug, RoHS version

Shell size :
E-A-B-C-D

Mounting type

Configuration :
09-15-25-37-50

contact type :
Solder pot

Contact type : S = female
P = male

Amphenol Socapex				Usine de Dole	
Echelle: 1:5				PLAN NOTICE	
IND. MODIFICATION DATE				DOSSIER:	
N SERIE 017F				DESIGNATION a souder / solder pot 17D+++++	

COMMUNICATION ET UTILISATION INTERDITES SAUF AUTORISATION