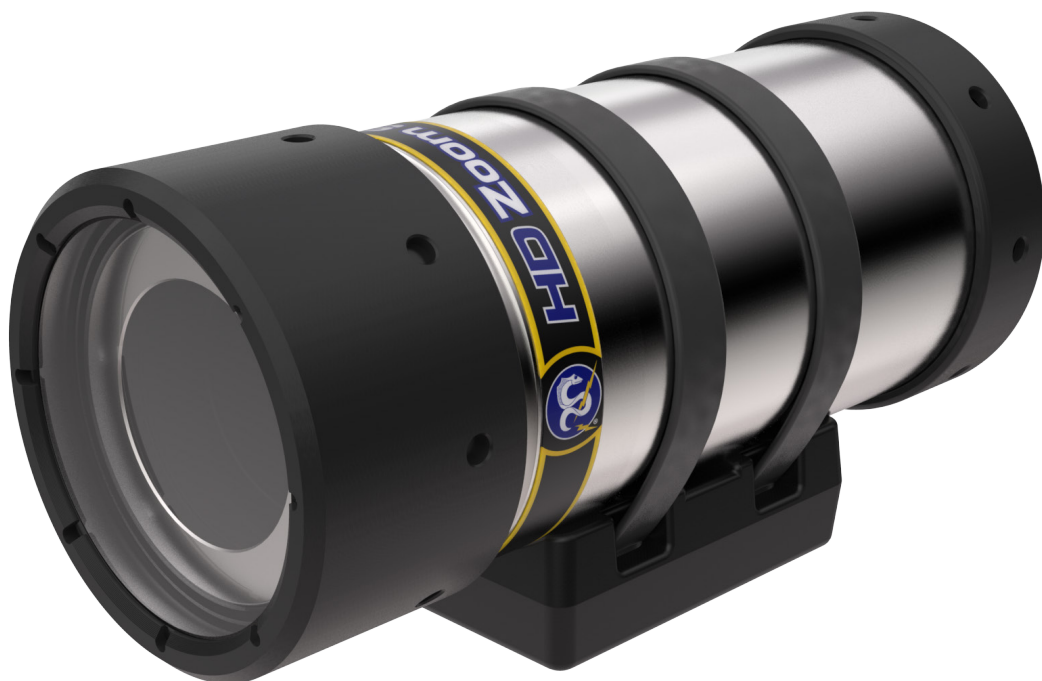


# HD Zoom SeaCam<sup>®</sup>



## FEATURES

**HD 30x Optical Zoom**

**Aluminum or Titanium Housing**

**Up to 6,000 m Depth Rating**

**Available with Flexlink<sup>®</sup>**

# HD Zoom SeaCam®

	HDZSC-3045
<b>Optical Specifications</b>	
<b>Lens</b>	4.3 mm ~ 129 mm, F/1.6 to F/4.7
<b>Focus</b>	Wide: 10 mm ~ infinity Telephoto: 1200 mm ~ infinity
<b>FOV in Water</b>	Wide: 47° H x 27° V x 53° D Telephoto: 1.7° H x 1° V x 2° D
<b>Video Specifications</b>	
<b>Image Sensor</b>	1/2.8 in. 2.1MP CMOS
<b>Sensor Resolution</b>	1920 H x 1080 V
<b>Measured Resolution</b>	850 TVL
<b>Faceplate Illumination</b>	0.024 Lux (50IRE)
<b>Signal to Noise</b>	>50dB
<b>Video Output</b>	HD-SDI 1.5Gb/s 1080p/30, 1080p/29.97, 1080p/25, 1080i/59.94, 1080i/50, 1080i/60, 1080i/30
<b>Serial Protocol</b>	VISCA
<b>Environmental Specifications</b>	
<b>Depth Rating</b>	Ti: 6,000 m Al: 2,000 m
<b>Operating Temp</b>	-5° C to 60° C [23° F to 140° F]
<b>Storage Temp</b>	-20° C to 60° C [-4° F to 140° F]
<b>Electrical Specifications</b>	
<b>Voltage</b>	10~36 VDC
<b>Power</b>	9W max
<b>Mechanical Specifications</b>	
<b>Housing</b>	6061 Aluminum 6Al-4V Titanium
<b>Port</b>	Optically polished glass
<b>Outer Diameter</b>	95.5 mm [3.76 in.]
<b>Overall Length</b>	226.6 mm [8.92 in.]
<b>Weight in Air</b>	Al: 2.18 kg [4.80 lbs] Ti: 2.73 kg [6.02 lbs]
<b>Weight in Water</b>	Al: 0.62 kg [1.37 lbs] Ti: 1.16 kg [2.56 lbs]
<b>Connector</b>	
<b>Default</b>	Flexlink®: SEACON MCBH8-NET Coax: SubConn 75CXBHM

