

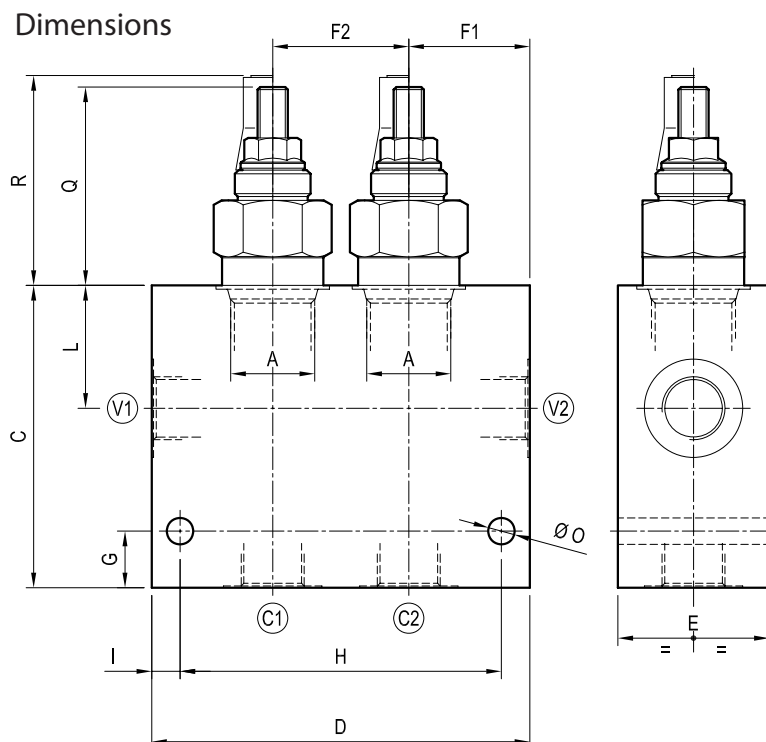
## Dual counterbalance, standard poppet type

## Double common cavity

## Cartridge style in manifold

VBSN-DE-C

2Y.02 - K - X - Y - Z - W



## Technical data

Max flow:	up to 320 l/min	(85 gpm)
Max operating pressure for steel body:	350 bar	(5000 psi)
Max operating pressure for aluminium body:	210 bar	(3000 psi)

To order only manifold see data sheet RE 18325-85

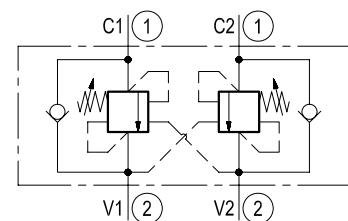
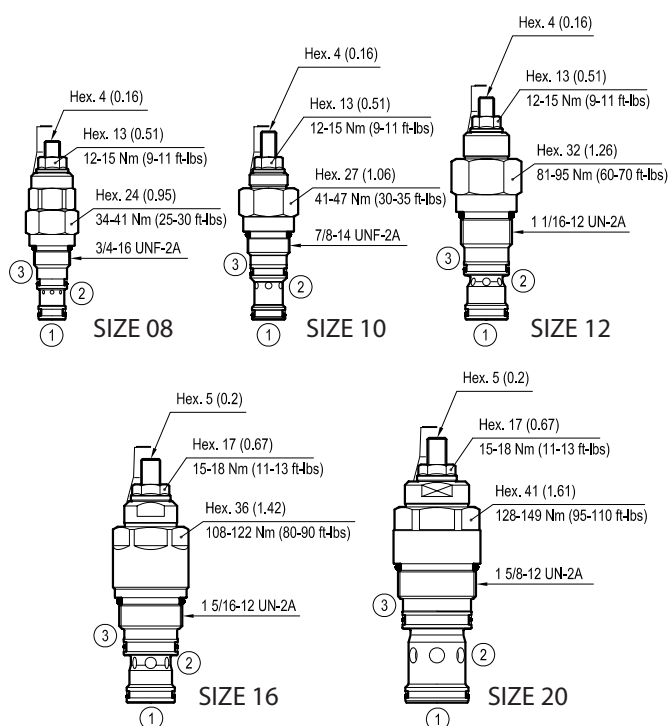


Table "Y"

[illegible]

## Cartridge style



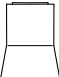
[mm (inches)]

Table "K"

Table "K"			K				
CARTRIDGE CODE	04	52	20	X	56	Z	VBSN-08AA
	04	52	31	X	85	Z	VBSN-10A
	04	52	28	X	57	Z	VBSN-12A
	04	52	29	X	27	Z	VBSN-16A
	04	52	25	X	58	Z	VBSN-20A

Table "X"

X	PILOT RATIO	
03	4 : 1	3:1 only for K=31 version
10	8 : 1	
33	4 : 1	With sealed pilot (only for K=20 version)

OPTIONS	
	
Ordering code	
K=20,31,28	11.04.23.002
K=29,25	11.04.23.004

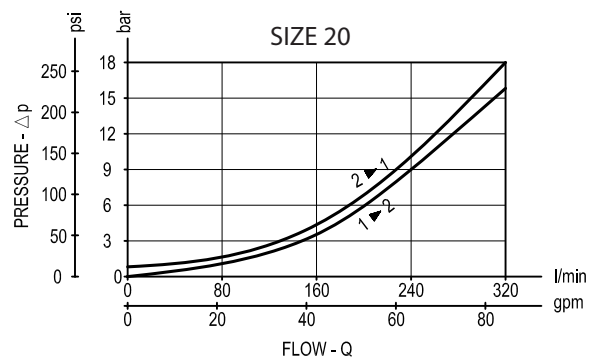
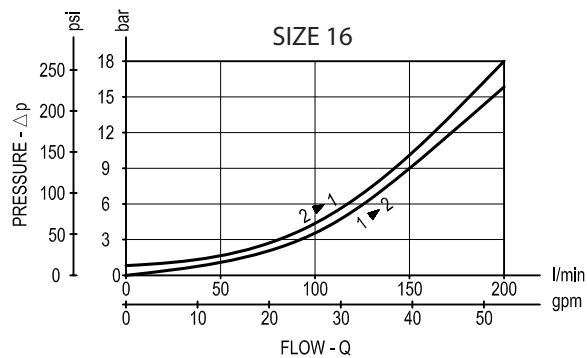
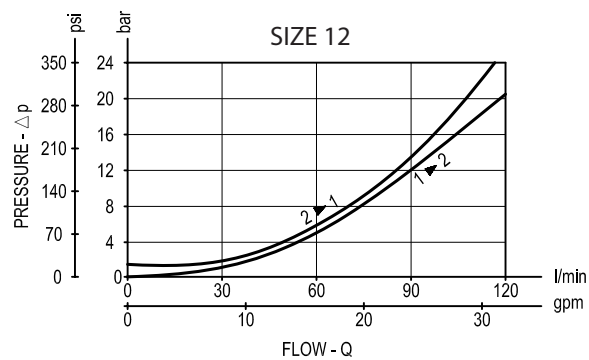
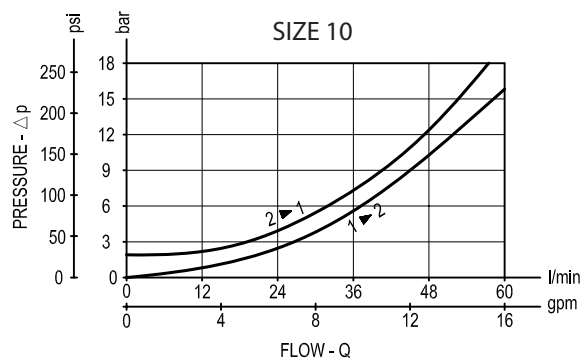
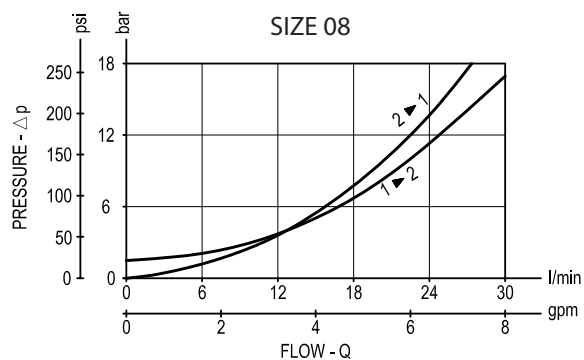
## CARTRIDGE TECHNICAL DATA

Common cavity: CA-08A-3C / CA-10A-3C / CA-12A-3C / CA-16A-3C / CA-20A-3C  
For other details see data sheet RE 18320-01, RE 18320-02, RE 18320-03, RE 18320-04 and RE 18320-05

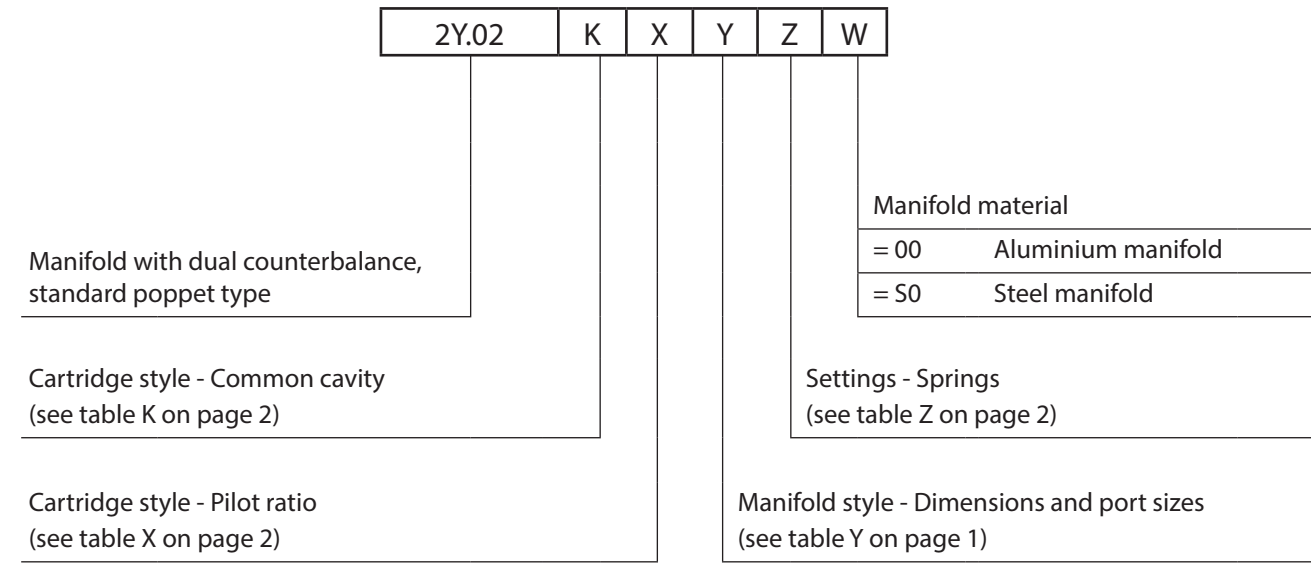
Table "Z"

[illegible]

## Performance graphs



Ordering code



Preferred types (readily available)

Type	Material number	Type	Material number
2Y0220030220S0	R934001415	2Y0229100540S0	R934000807
2Y0220030235S0	R934001416	2Y023103022000	R934000726
2Y0231030320S0	R934001426	2Y0231030235S0	R934000876
2Y0231030335S0	R934001428	2Y023103032000	R934000725
2Y0228030420S0	R934001432	2Y0231100335S0	R934003491
2Y0228030435S0	R934001435		
2Y0229030520S0	R934001436		
2Y0229030535S0	R934003341		
2Y0225030620S0	R934001439		
2Y0225030635S0	R934003340		
2Y022003022000	R934000653		
2Y0225100640S0	R934003365		
2Y022803032000	R934000656		
2Y022803042000	R934000658		
2Y0228100435S0	R934003490		

Further types available by request