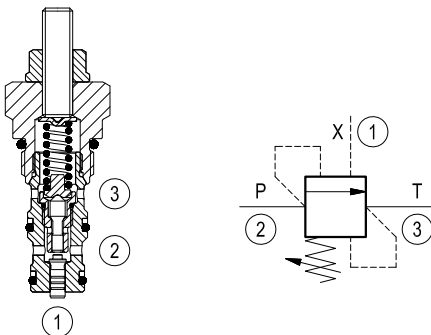


Priority unloading pilot operated

Common cavity, Size 08

VMSN-08A

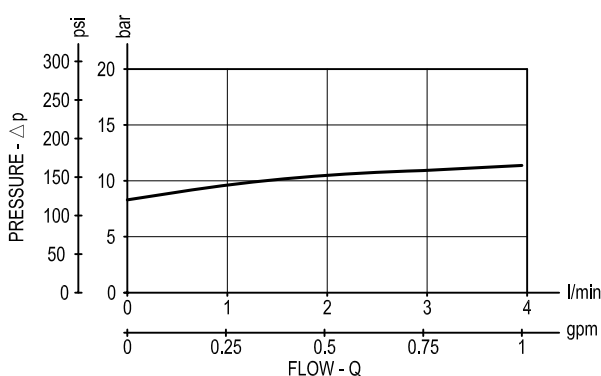
04.75.21 - X - 56 - Z



Description

Flow is blocked from 2 to 3 until pressure increases to meet the selected valve setting, lifting the small, pilot-stage poppet from its seat. This action exhausts oil above the main-stage piston (spool type), allowing it to shift fully and unload flow from 2 through 3 with minimal pressure drop. Similarly, when remote pilot pressure at 1 exceeds the pressure setting, a secondary piston lifts the pilot-stage poppet from its seat, again exhausting fluid from 2 through 3.

Performance



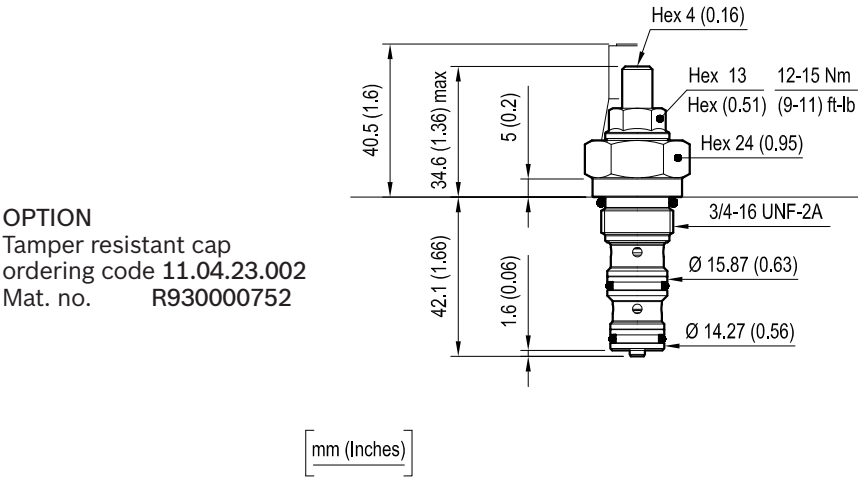
Technical data

| | | |
|----------------------------------|----------------------|--|
| Max. operating pressure port 1-2 | bar (psi) | 350 (5000) |
| Max. pressure admitted port 3 | bar (psi) | 50 (750) |
| Max. flow | l/min. (gpm) | 3 (1) |
| Max. internal leakage (*) | drops/min. | 15 |
| Fluid temperature range | °C (°F) | -30 to 100 (-22 to 212) |
| Installation torque | Nm (ft-lbs) | 34-41 (25-30) |
| Weight | kg (lbs) | 0.14 (0.31) |
| Cavity | | CA-08A-3N see data sheet RE 18325-70 |
| Seal kit (**) | code material no. | RG08A3010520100 R930000861 |
| Fluids | | Mineral-based or synthetics with lubricating properties at viscosities of 10 to 500 mm ² /s (cSt) |
| Filtration | | Nominal value max. 10µm (NAS 8) ISO 4406 19/17/14 |
| Installation | | No restrictions |
| Other general technical data | | See data sheet RE 18350-50 |

(*) at 80% of pressure setting

(**) Only external seals for 10 valves

Dimensions



Ordering code

| | | | | | |
|----------|---|----|---|----|---|
| 04.75.21 | X | 56 | Z | 00 | * |
|----------|---|----|---|----|---|

Priority unloading pilot operated

Differential unload / reload
= 06 Re-seat at (66 ± 2.5) % of pressure setting
Version with re-seat at (57±2.5)% of pressure setting available by request, please consult factory.
Common cavity, Size 08

Series 0/A to L
unchanged performances and dimensions

Version and options standard

| | SPRINGS | |
|------|--------------------------------|---|
| | Adj. press. range bar (psi) | Std. setting bar (psi) Q= 1 l/min |
| = 03 | 20-40 (290-580) | 30 (435) |
| = 05 | 35-70 (500-1000) | 50 (725) |
| = 10 | 70-140 (1000-2000) | 100 (1450) |
| = 20 | 105-210 (1500-3000) | 200 (2900) |
| = 35 | 175-350 (2500-5000) | 350 (5000) |

Note: Special settings available. Contact factory authorized representative for ordering code

| Type | Material number |
|-----------------|-----------------|
| 047521065603000 | R901109763 |
| 047521065605000 | R901109764 |
| 047521065610000 | R901109765 |
| 047521065620000 | R901109766 |
| 047521065635000 | R901109767 |

| Type | Material number |
|------|-----------------|
| | |
| | |
| | |
| | |
| | |