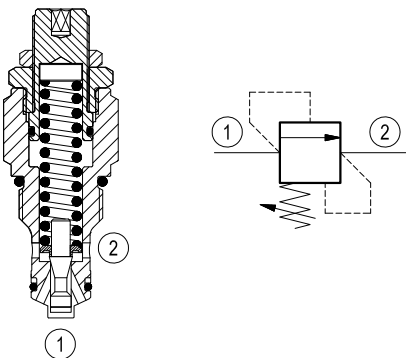


Relief, direct acting guided poppet type

Common cavity, Size 10

VMD1.040

OT.M1.03 - X - 99 - Z



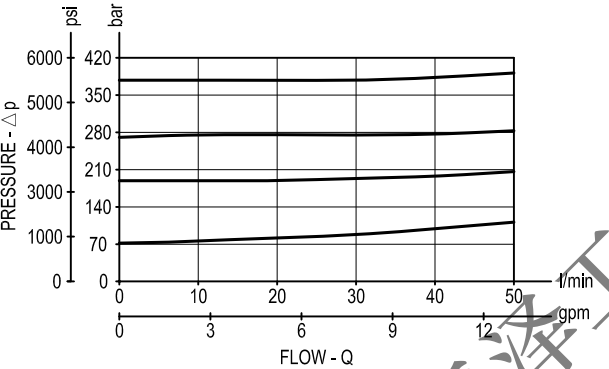
Description

Flow is blocked from 1 to 2 until pressure increases to meet the selected valve setting, lifting the poppet from its seat and allowing relief flow through port 2 to tank. Pressure at port 2 is additive to the relief setting of the valve. The unique Bosch Rexroth Oil Control poppet design provides enhanced stability at all flows and pressures.

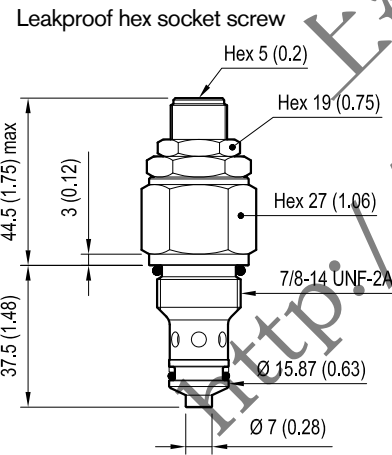
Technical data

Max pressure	bar (psi)	350 (5000)
Max flow	l/min (gpm)	50 (13)
Installation torque	Nm (ft-lb)	55-65 (41-48)
Cavity		CA-10A-2N
Weight	kg (lbs)	0.17 (0.38)
Fluid temperature range	°C (°F)	between -30 (-22) and +100 (+212)

Performance



Dimensions



Ordering code

OT.M1.03	X	99	Z
----------	---	----	---

Relief, direct acting
guided poppet type

Adjustments
= 03 Leakproof hex. socket
screw

Common cavity Size 10

SPRINGS

	Adj. press. range bar (psi)	Press. increase bar/turn (psi/turn)	Std. setting press. bar (psi) (Q=5 l/min)
= 10	25-120 (350-1750)	16.5 (239)	100 (1450)
= 20	40-200 (580-2900)	26.5 (384)	180 (2600)
= 35	200-350 (2900-5000)	51 (740)	350 (5000)

mm(Inches)

Type	Material number
OTM103039910000	R901099401
OTM103039920000	R901099402
OTM103039935000	R901114696

Type	Material number