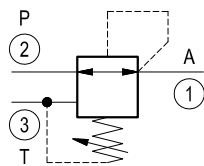
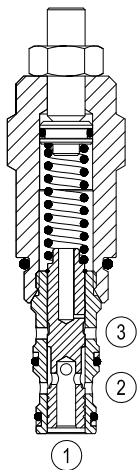


Pressure reducing and relieving, direct acting spool type

Common cavity, Size 10

VRPR-10A

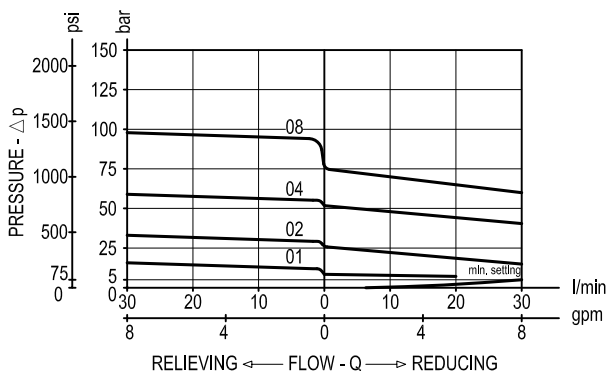
04.95.04 - X - 85 - Z



Description

Initially, flow passes freely from 2 to 1. When the pressure at 1 exceeds the pressure setting, the valve acts to restrict input flow at 2. This increases the pressure drop through the valve and maintains consistent pressure at 1. The spring chamber is drained at 3 to prevent a build-up of back-pressure against the spool. Additionally, if pressure at 1 rises above the pressure setting, flow is relieved to 3 until the setting is re-attained.

Performance



Technical data

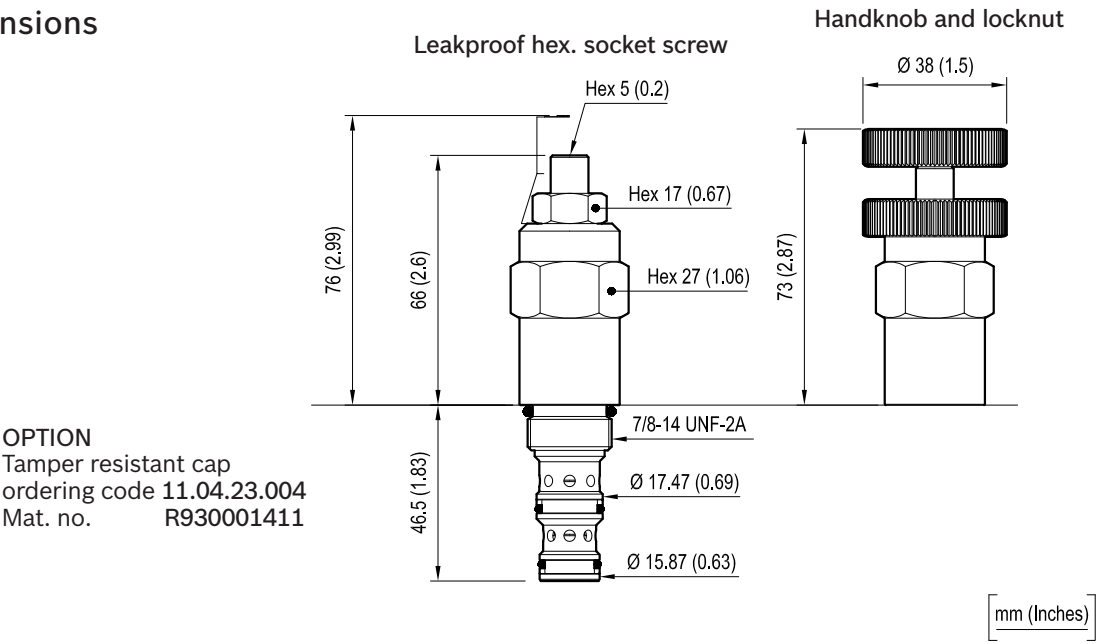
| | | |
|------------------------------------|-------------------------------------|--|
| Max. operating pressure port 2 (P) | bar (psi) | 350 (5000) 210 (3000) for version Z=01 |
| Max. pressure admitted port 1 (A) | bar (psi) | 105 (1500) |
| Max. flow | l/min. (gpm) | 30 (8) |
| Max. internal leakage (*) | cm ³ /min. (cu.in./min.) | 50 (3) |
| Fluid temperature range | °C (°F) | -30 to 100 (-22 to 212) |
| Installation torque | Nm (ft-lbs) | 41-47 (30-35) |
| Weight (**) | kg (lbs) | 0.26 (0.57) |
| Cavity | | CA-10A-3N see data sheet RE 18325-70 |
| Seal kit (***) | code material no. | RG10A3010520100 R901111369 |
| Fluids | | Mineral-based or synthetics with lubricating properties at viscosities of 10 to 500 mm ² /s (cSt) |
| Filtration | | Nominal value max. 10µm (NAS 8) ISO 4406 19/17/14 |
| Installation | | No restrictions |
| Other general technical data | | See data sheet RE 18350-50 |

(*) 1 - 3 to 80% of pressure setting

(**) Standard version X=03 type

(***) Only external seals for 10 valves

Dimensions



Ordering code

| | | | | | | | | |
|---|------------------|----------|-----------------|----|--|--------------------------------|---|--|
| 04.95.04 | X | 85 | Z | 00 | * | | | |
| Pressure reducing and relieving, direct acting spool type | | | | | Series O/A to L unchanged performances and dimensions | | | |
| | | | | | Version and options standard | | | |
| | | | | | | SPRINGS | | |
| | | | | | | Adj. press. range bar (psi) | Pressure increase bar/turn (psi/turn) | Std. setting bar (psi) (reduc. mode) |
| | | | | | | = 01 | 2-14 (30-200) | 2 (29) |
| = 02 | 2-25 (30-350) | 3 (44) | 7-10 (100-145) | | | | | |
| = 04 | 10-50 (145-725) | 7 (102) | 35-40 (500-580) | | | | | |
| = 08 | 28-80 (400-1160) | 14 (203) | 45-50 (650-725) | | | | | |

Note: Special settings available. Contact factory authorized representative for ordering code

| Type | Material number | Type | Material number |
|-----------------|-----------------|-----------------|-----------------|
| 04950403850100A | R901104066 | 04950404850200A | R901109744 |
| 04950403850200A | R901109740 | 04950404850400A | R901109745 |
| 04950403850400A | R901102333 | 04950404850800A | R901109747 |
| 04950403850800A | R901109742 | | |
| 049504048501000 | R901109743 | | |