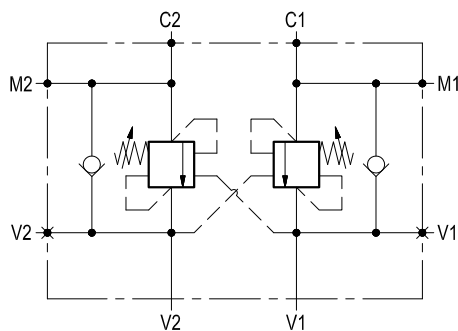


Dual counterbalance

A-VBSO-DE-90-FC2

08.44.89 - X - Y - Z

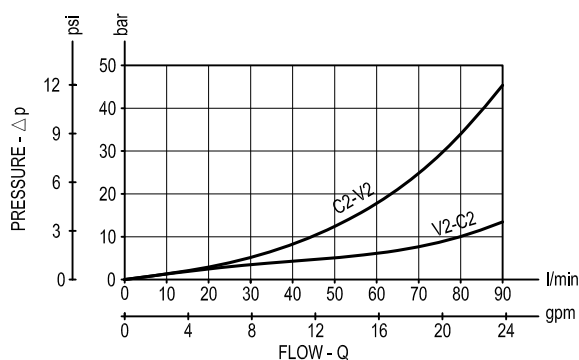


Description

It provides static and dynamic control of load by regulating the flow IN and OUT of the actuator, through ports C1 and C2. This valve module includes 2 sections, each one composed by a check and a relief valve pilot assisted by pressure in the opposite line: the check section allows free flow into the actuator, then holds the load against reverse movement; with pilot pressure applied at the line across, the pressure setting of the relief is reduced in proportion to the stated ratio until opening and allowing controlled reverse flow. Back-pressure at V1 or V2 is additive to the pressure setting in all functions. For better safety and compact assembly, the C1 and C2 ports are gasket mounted directly on the actuator.

Note: port identified with M are not protected with calibrated orifice but in direct connection with pressure channels.

Performance



Technical data

Hydraulic

Max. operating pressure	bar (psi)	350 (5000)
Max. flow	l/min (gpm)	90 (24)

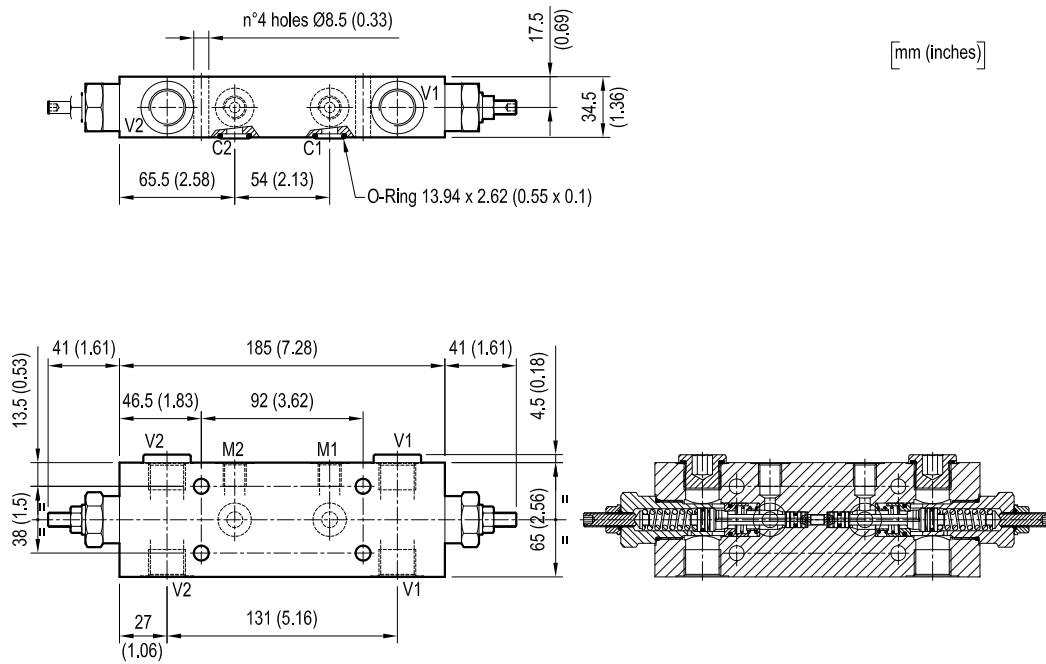
Relief setting: at least 1.3 times the highest expected load.

General

Manifold material	Steel	
Weight	kg (lbs)	3 (6.6)
Fluid temperature range	°C (°F)	between -30 (-22) and +100 (212)
Other technical data	see data sheet RE 18350-50	

Note: for applications outside these parameters, please consult us.

Dimensions



Ordering code

08.44.89	X	Y	Z
----------	---	---	---

Dual counterbalance

Pilot ratio

= 03 4.2:1

	SPRINGS		
	Adj. pressure range bar (psi)	Pres. increase bar/turn (psi/turn)	Std. setting Q=5 (l/min.) bar (psi)
= 35	100-350 (1450-5000)	138 (2001)	350 (5000)

Port sizes	V1-V2	C1-C2	M1-M2
= 03	G 1/2	Ø 9 (0.35)	G 1/4

[illegible][illegible]