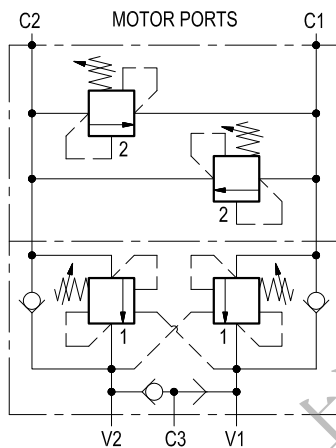
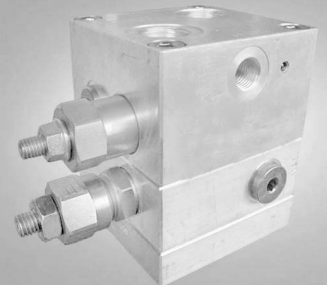


Dual counterbalance and cross over relief with brake release port

VBSO-DE-VF-30-VSDI-FM

06.03.01 - X



Description

It provides static and dynamic motion control by regulating flow and pressure IN and OUT of the hydraulic motor at ports C1 and C2. It includes 2 motion control sections (ref. 2), each one composed by a check and a relief valve pilot assisted by pressure in the opposite line: the check allows free flow into the motor, then locks and prevents reverse movement. With pilot pressure applied at the line across, the pressure setting of the relief is reduced in proportion to the stated ratio until opening and allowing controlled reverse motion. It also includes 2 cross-over direct operated relief sections (ref. 1) which control inlet pressure at starting and motor outlet pressure at stopping. Back-pressure at V1 or V2 is additive to the pressure settings in all functions. Through port C3, a shuttle valve directs either V1 or V2 line pressure to the spring actuated brake for brake releasing.

Technical data

Hydraulic

Operating pressure	bar (psi)	up to 210 (3000)
Max flow	l/min (gpm)	60 (16)

Flangeable on SAUER-DANFOSS orbital motors OMP-OMR series.

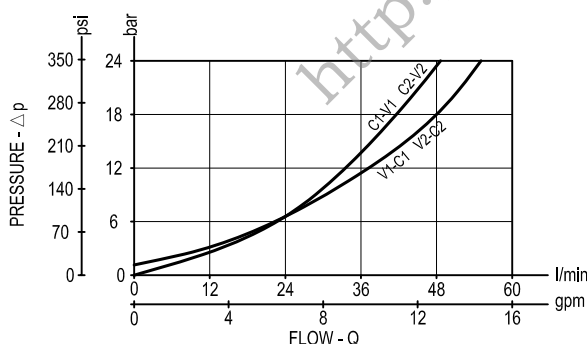
Relief setting: at least 1.3 times the highest expected load. In addition, both the relief setting and the pilot ratio must be determined in order to achieve building-up of pilot pressure in V1 or V2 high enough to release the brake prior to any valve opening.

General

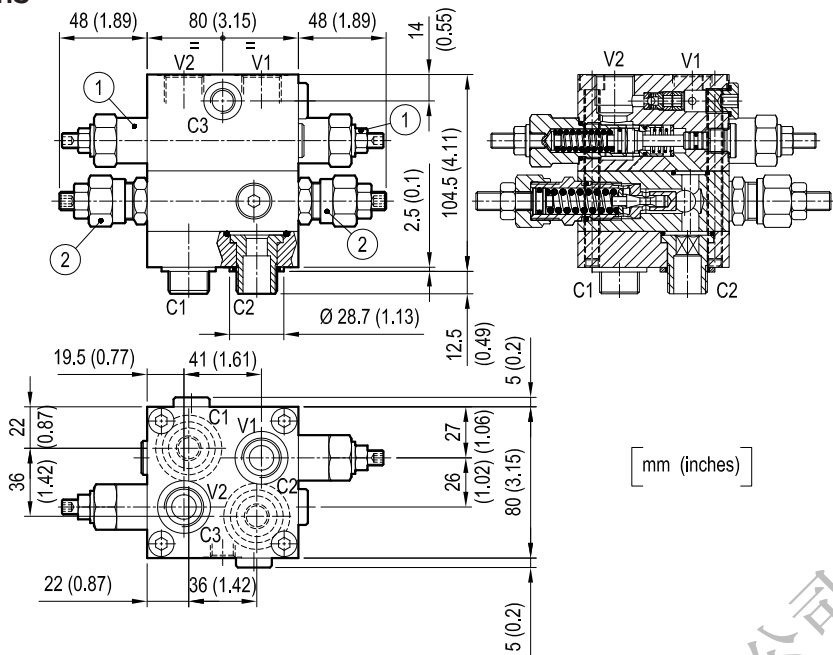
Manifold material	Aluminium	
Note: aluminium bodies are often strong enough for operating pressures exceeding 210 bar (3000 psi), depending from the fatigue life expected in the specific application. If in doubt, consult our Service Network.		
Weight	kg (lbs)	2.5 (5.5)
Fluid temperature range	°C (°F)	between -30 (-22) and +100 (212)
Other technical data	see data sheet RE 18350-50	

Note: for applications outside these parameters, please consult us.

Performance



Dimensions



Ordering code

06.03.01

X

Dual counterbalance
with brake release port

Pilot ratio

= 018

4.2:1

= 064

11:1

Port sizes	V1 - V2	C1 - C2	C3
	G 1/2	G 1/2	G 1/4

SPRINGS			
	Adj. pressure range bar (psi)	Pres. increase bar/turn (psi/turn)	Std. setting Q=5 (l/min.) bar (psi)
for X=018	Valve 1 60-210 (900-3000)	56 (812)	200 (2900)
	Valve 2 50-210 (725-3000)	47 (682)	130 (1900)
for X=064	Valve 1 60-250 (900-3600)	70 (1015)	250 (3600)
	Valve 2 30-100 (435-1450)	24 (348)	50 (725)

Tamper resistant cap
code 11.04.23.002 R930000752 for Valve 1
code 11.04.23.003 R930000754 for Valve 2

Type	Material number
06030101800000C	R930002745
060301064000000	R930001945

Type	Material number

© This document, as well as the data, specifications and other information set forth in it, are the exclusive property of Bosch Rexroth Oil Control S.p.a.. It may not be reproduced or given to third parties without its consent.

The data specified above only serve to describe the product. No statements concerning a certain condition or suitability for a certain application can be derived from our information. The information given does not release the user from the obligation of own judgment and verification. It must be remembered that our products are subject to a natural process of wear and aging.

Subject to change.