

SubConn® Circular

12, 16 and 25 contacts

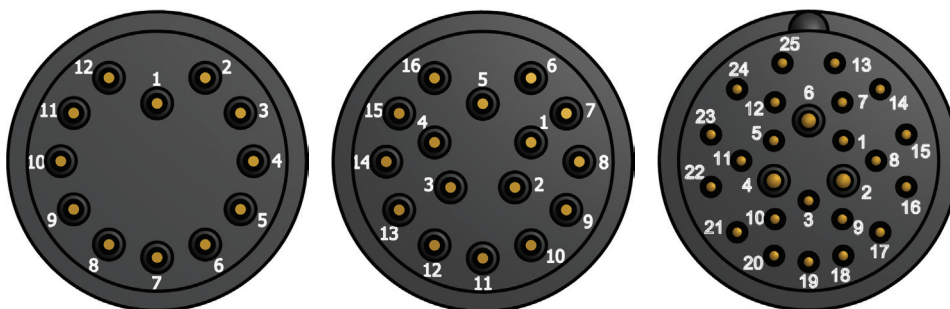
Connector specifications

Voltage rating	600 V AC rms
DC rating	85% of above AC rating
12 and 16 contacts current rating	10 A per contact (max 60 A per connector)
25 contacts current rating	3 power contacts 10 A per contact, 22 signal contacts 5 A per contact (max 60 A per connector)
Insulation resistance	> 200 Mohm
Contact resistance	< 0.01 ohm
Wet matings	> 500
Temperature rating (water)	- 4 to 60°C, 25 to 140°F
Temperature rating (air)	- 40 to 60°C, - 40 to 140°F
Storage temperature rating	- 40 to 60°C, - 40 to 140°F
12 and 16 contacts connector depth rating	1,400 bar, 20,000 psi
25 contacts connector depth rating	700 bar, 10,000 psi
Depth rating PEEK	300 bar, 4,350 psi

Material specifications

Connector body	Chloroprene rubber
Bulkhead body	Brass, stainless steel, titanium, anodised aluminium or PEEK
12 and 16 contacts	Gold plated brass UNS - C36000
25 contacts	Contacts 2, 4 and 6: Gold plated brass UNS - C36000 Contacts 1, 3, 5, 7 - 25: Gold plated beryllium copper
O-rings	Nitrile
Locking sleeves	POM
Snap rings	Stainless steel AISI 302
12 and 16 conductor inline cable (60 cm, 2 ft)	18 AWG 0.82 mm ² chloroprene rubber
25 conductor inline cable (60 cm, 2 ft)	3 x 18 AWG 0.82 mm ² , 22 x 20 AWG 0.52 mm ² polyurethane
12 and 16 contacts bulkhead leads (30 cm, 1 ft)	18 AWG 0.82 mm ² coloured PTFE
25 contacts bulkhead leads (30 cm, 1 ft)	3 x 18 AWG 0.82 mm ² , 22 x 22 AWG 0.33 mm ² tagged PTFE

Face view (male)



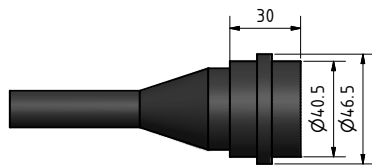
Inline cable colour code

1 Black	4 Green	7 White/black	10 Orange/black	13 Red/white	16 Black/red
2 White	5 Orange	8 Red/black	11 Blue/black	14 Green/white	
3 Red	6 Blue	9 Green/black	12 Black/white	15 Blue/white	

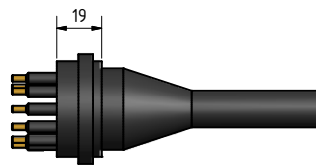
(Except 25 conductor cable - tagged numbering, 1-25)

Nominal cable outside diameter (OD)

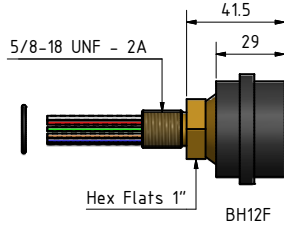
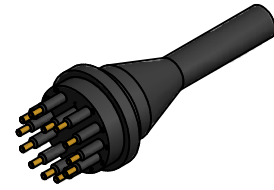
12 conductor cable 0.605", 15.4 mm
16 conductor cable 0.704", 17.9 mm
25 conductor cable 0.589", 15.0 mm



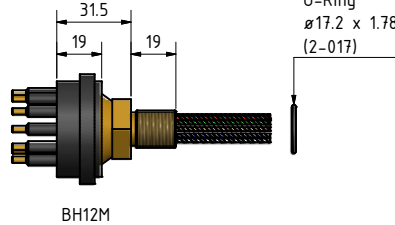
IL12F



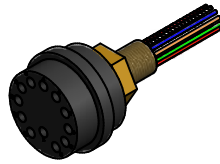
IL12M



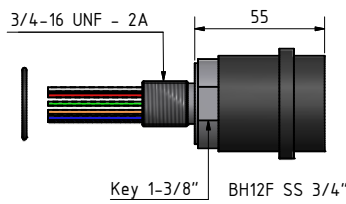
BH12F



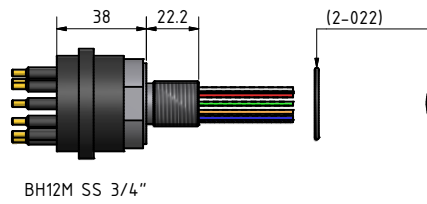
BH12M



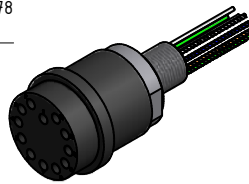
Note:
BH 5/8" only in 12 pin



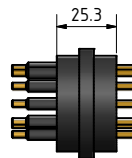
BH12F SS 3/4"



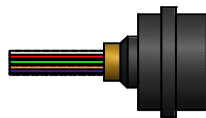
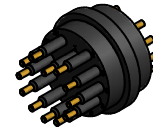
BH12M SS 3/4"



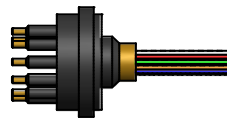
AT12F



AT12M



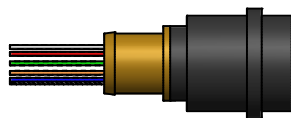
OM12F



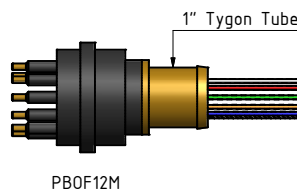
OM12M



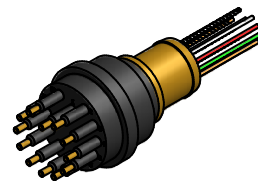
Note:
OM only 12 and 16 pins



PB0F12F



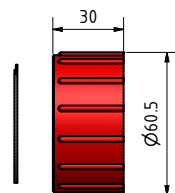
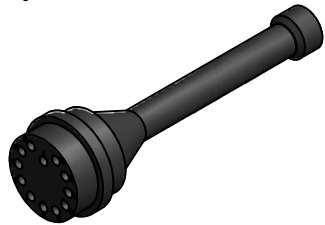
PB0F12M



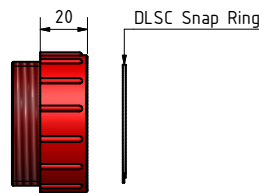
DC12F



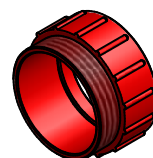
DC12M



DLSC-F



DLSC-M



Drawing information

Dimensions in mm (1 mm = 0.03937 inch)
Threads in inches (1 inch = 25.4 mm)