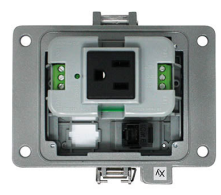


# Part Number: P-R2-K3RF0

Panel Interface Connector with Category 5e RJ45; Panel Mount Housing; UL Type 4; GFCI Duplex Inside-Outlet; No Circuit Breaker



## Product Specifications

### Description Detail

Panel Interface Connector that typically mounts to the outside of a control panel housing. These programming ports eliminate the need to open the panel door and improve safety and compliance to NFPA 70e. We offer 15,000+ combinations of components and outlets.

### Component Details

Component Code	R2
Component Quantity	1
Component Description	Category 5e RJ45
Component Type	Bulkhead
Gender Front	RJ45 Female
Gender Back	RJ45 Female




### Electrical Specifications

Power Type	Domestic GFCI Inside-Outside Rear Outlet
Power VAC	125
Power AMPS	15
SCCR Rating	2kA



Mechanical Specifications	
Enclosure Rating	IP65
Housing Size	K Size Housing
Housing Type	Cast Aluminum Base
UL Type	Type 4
Latch	Type 304 Stainless Steel
Cover	Polycarbonate, UV rated
Geometric Data	
Width	5.08 in
Height	3.54 in
Depth	1.60 in
Commercial Data	
Country of Origin	US
Schedule B Code	8537.10.9090
UPC Code	842864101468

## Approval Certifications

Logo	Approval	Additional Text	Certificate Name	
	UL Underwriters Laboratories Inc.	Outlets UL Recognized for 15A	E207344	
	CSA Canadian Standards Association	Outlets Rated for 5A Max for Computer Use Only	File # LR110845	
<b>RoHS</b>	RoHS Restriction of Hazardous Substances		GP0004-0616-B-RH	
	CE European Conformity		GP0013-0317-A-CE	