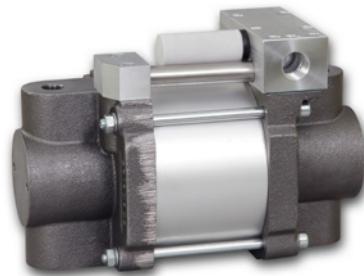


(14,500 psi)



## S...D-Pumps

- » Double-acting
- » With one air drive piston
- » Operating pressures of up to 1,000 bar (14,500 psi)

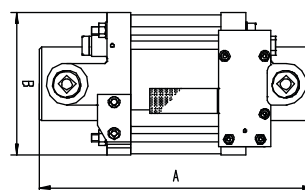
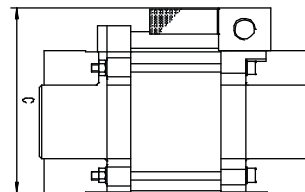
The S...D pumps run with lower pulsation than the single-acting S pumps and achieve an approx. 50% higher pump capacity.

- Connection for direct pilot valve air for switching the pump on and off via solenoid valves with small nominal size

- Air control unit for S pumps, consisting of a filter/pressure regulator combination, control pressure gauge and shut-off valve

**Order code: S35(D) with C1.5**

Other options available on request.



Type	Pressure ratio*	Displ. Volume **		Outlet pressure ***		Flow capacity l/min ****	Connections			Dimensions in mm			Weight kg
		cm <sup>3</sup>	cu.inch	bar	psi		Air Drive L	Inlet A	Outlet B	A	B	C	
S15D	1:16	57.0	3.48	160	2320	17.56	1/2 BSPP	3/4 BSPP	3/4 BSPP	260	135	175.5	14.5
S25D	1:24	39.0	2.39	240	3480	12.00	1/2 BSPP	3/4 BSPP	3/4 BSPP	260	135	175.5	14.5
S35D	1:38	25.2	1.54	380	5510	7.58	1/2 BSPP	3/4 BSPP	3/4 BSPP	260	135	175.5	14.5
S60D	1:60	16.0	0.98	600	8700	4.80	1/2 BSPP	1/2 BSPP	3/8 BSPP	260	135	175.5	14.5
S100D	1:107	9.0	0.55	1000	14500	2.68	1/2 BSPP	1/2 BSPP	3/8 BSPP	260	135	175.5	14.5
S150D	1:155	6.2	0.38	1000	14500	1.85	1/2 BSPP	1/2 BSPP	3/8 BSPP	260	135	175.5	14.5