

## COMPRESSED AIR FILTER - HIGH FLOW

### SF18 (G 1½, G 2)

**SHAVO**  
FIRST NAME IN PNEUMATICS

#### FEATURES

Shavo's Very High Flow capacity direct ported Air Filter with high water removal efficiency and minimal pressure drop are used for removal of liquids and solid contaminants to protect air tools and equipment.

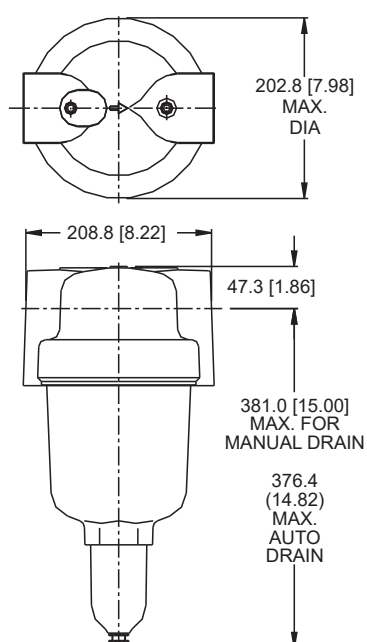
Ideally suited for header lines and very high flow applications.



| PARAMETERS  | SPECIFICATIONS  |
|---|---|
| Pipe Threads  | G 1 ½, 2 Parallel (F) - Standard  |
| Filter Element Size   | 5,25, 40 micron   |
| Element Material  | Sintered Bronze - Standard  |
| Body Material   | Al. Alloy die-cast  |
| Bowl Material   | Al. Alloy Metal with sight glass - Standard   |
| Maximum Inlet Pressure  | with Metal Bowl (Manual drain) : 250 psig (17.5 bar)<br>with Metal Bowl (Auto, Semiauto drain): 150 psig (10.5 bar) |
| Maximum Operating Temperature (ambient)   | 80° C (175° F)  |
| Standard Nominal Flow Rate<br>At 6 bar (87 PSI) supply pressure<br>and 14.5 PSI (1 bar) pressure drop | 1890 scfm (900 dm³ / sec) CV(35.66)   |
| Drain   | Automatic - Standard<br>Manual - Optional<br>Semi Automatic - Optional  |

+ Values indicated are with 40 micron elements, with finer elements these values will be lower.

Note: Automatic and Semi-automatic drain available with Nitrile elastomer only.



\* Technical know-how, design and drawings originally from C.A. Norgren Co. USA

**SHAVO**

Mumbai, India.

# COMPRESSED AIR FILTER - HIGH FLOW

**SHAVO**

FIRST NAME IN PNEUMATICS

## SF18 (G 1½, G 2)

| Size  | Flow (dm³/s)            | Element (um) | Drain | Bowl  | Model         |
|-------|-------------------------|--------------|-------|-------|---------------|
| G 1 ½ | 1890 scfm (900 dm³/sec) | 40           | Auto  | Metal | SF18-B00-A3DD |
| G 2   | 1890 scfm (900 dm³/sec) | 40           | Auto  | Metal | SF18-C00-A3DD |

### Option Selector

Sample Model Number → **S F 1 8 - C O O - M 3 D D - X - X X X - X X X**

Position → **0 1 2 3 - 4 5 6 - 7 8 9 10 - 11 - 12 13 14 - 15 16 17**

|    |                |         |        |                             |                  |    |  |     |   |   |     |   |                         |
|----|----------------|---------|--------|-----------------------------|------------------|----|--|-----|---|---|-----|---|-------------------------|
| 0  | S              | =       | Shavo  |                             |                  |    |  |     |   |   |     |   |                         |
| 1  | Unit           | F       | =      | Filter                      |                  |    |  |     |   |   |     |   |                         |
| 2  | 3              | Series  | 18     | =                           | High Flow Series |    |  |     |   |   |     |   |                         |
| 4  | Pipe Size      | B       | =      | 1 1/2"                      | C                | =  | 2"   |     |   |   |     |   |                         |
| 5  | 6              | Options | 00     | =                           | Standard         |    |  |     |   |   |     |   |                         |
| 7  | Drain          | M       | =      | Manual                      | A                | =  | Automatic (only available with Nitrile elastomers) | S   | = | Semi Automatic (only available with Nitrile elastomers) |     |   |                         |
| 8  | Filter Element | Size    | Micron | 5                           | 25               | 40 | Sintered Bronze                                    | 1   | 2 | 3   |     |   |                         |
| 9  | Bowl           | D       | =      | Metal Bowl with Sight Glass | [M]              | =  | Metal Bowl without sight glass                     |     |   |   |     |   |                         |
| 10 | Thread         | A       | =      | NPT                         | D                | =  | BSP  | B   | = | BSPT  |     |   |                         |
| 11 | Elastomer      | [X]     | =      | Standard Nitrile            | [E]              | =  | EPDM   | [V] | = | Viton   | [L] | = | Low Temperature Nitrile |

## SF18 (G 1½, G 2)

12 13 14 Test / Approval

|     |     |     |   |
|-----|-----|-----|---|
| C   | 0   | 0   | CE  |
| C   | 0   | 1   | UKCA  |
| C   | 0   | 2   | CE,UKCA   |
| E   | 0   | 0   | EAC   |
| E   | 0   | 1   | EAC, UKCA   |
| S   | 0   | 0   | SIL3  |
| S   | 0   | 1   | SIL3, UKCA  |
| G   | 0   | 0   | CE, EAC   |
| G   | 0   | 1   | CE, EAC, UKCA                                       |
| H   | 0   | 0   | CE, SIL3  |
| H   | 0   | 1   | CE, SIL3, UKCA                                      |
| K   | 0   | 0   | CE, EAC, SIL3                                       |
| K   | 0   | 1   | CE, EAC, SIL3, UKCA                                 |
| X   | X   | X   | Standard Units Without Any Certificatios / Approval |
| [O] | [0] | [0] | Other Customer Special Requirement if Any           |

15 16 17 Compliance

|   |   |   |   |
|---|---|---|---|
| X | X | X | Standard Unit Without any Compliance                              |
| A | 0 | 1 | RoHS 3 Compliance   |
| A | 0 | 2 | REACH Compliance  |
| A | 0 | 3 | Copper Free (Only Applicable Aluminium Version)                   |
| A | 0 | 4 | RoHS3, REACH Compliance   |
| A | 0 | 5 | RoHS3, REACH, Copper Free (Only Applicable for Aluminium Version) |
| A | 0 | 6 | RoHS3, Copper Free (Only Applicable for Aluminium Version)        |
| A | 0 | 7 | REACH, Copper Free (Only Applicable for Aluminium Version)        |

Note: Option shown in the [ ] bracket are special, Please contact Sales HQ/Manufacturing.

\* Technical know-how, design and drawings originally from C.A. Norgren Co. USA