

### Technical description

The pneumatic pump unit of type no. 2566 supplies the lubrication points via dynamic metering valves.

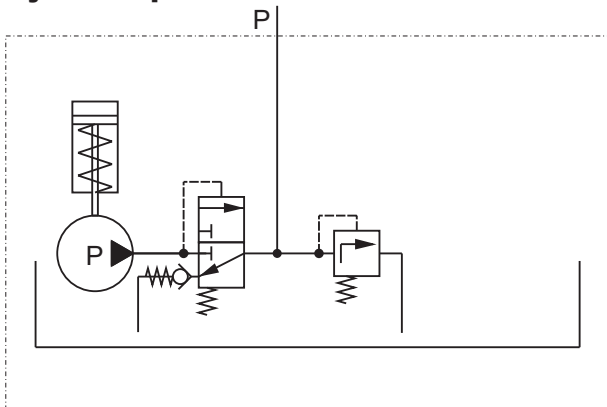
### Method of operation

Lubrication starts when the piston is pressurized. The compressed air has to be adjusted in a way that the pressure relief valve only opens when all metering valves have lubricated. This ensures that all metering valves supply enough lubricant to the lub points.

When the 3/2-way solenoid valve switches, the piston is pushed into its original position. The main line is relieved down to  $< 1$  bar by the relief valve and the metering valves restack the lubricant for the next lubrication pulse. At the same time, the lubricant is sucked out of the reservoir for the next stroke.

The metering valves' total dosage should not exceed 60% of the pump's delivery quantity.

### Hydraulic plan



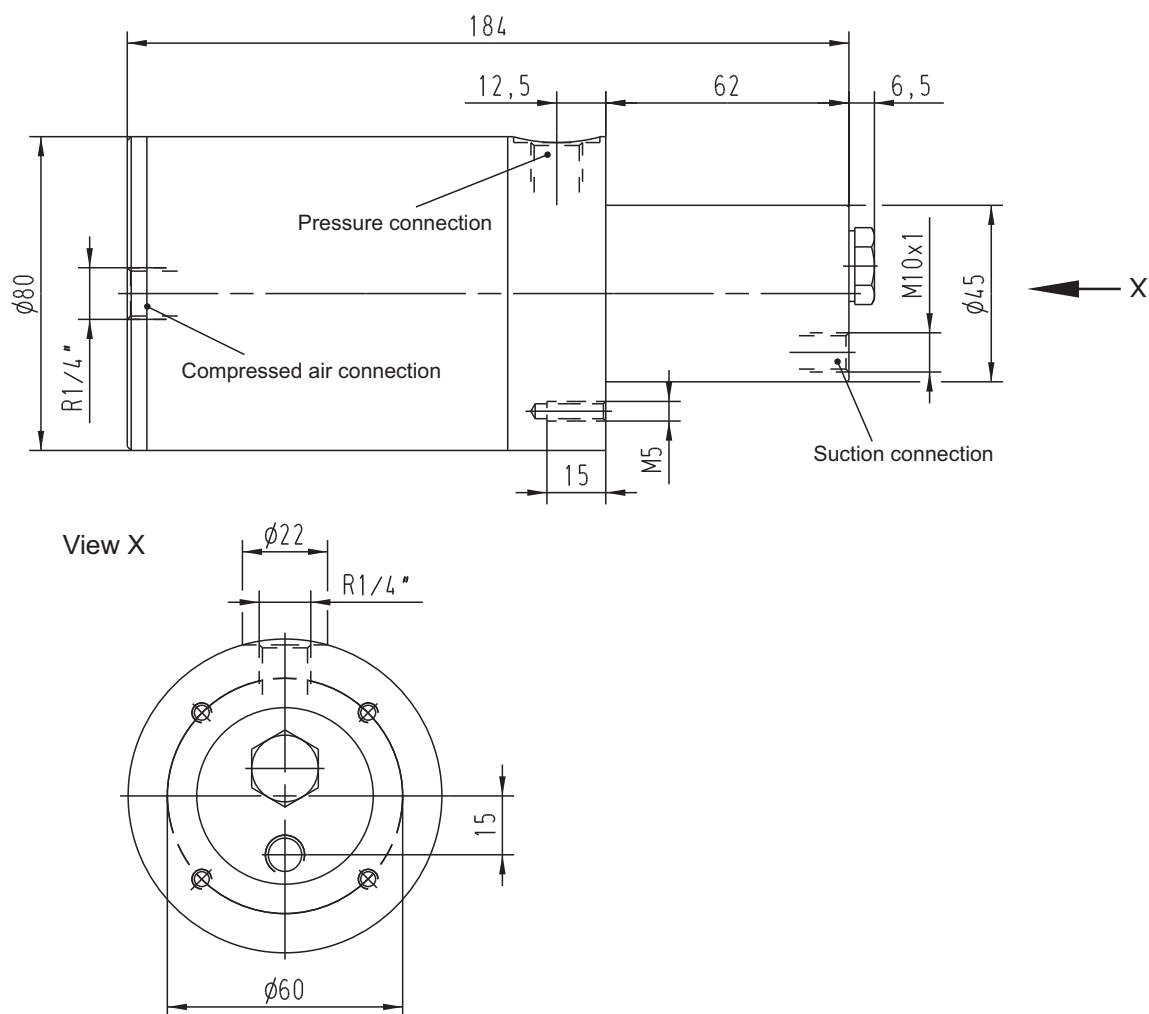
### Technical Data

#### Pneumatic pump

Output rate:	3 cm <sup>3</sup> /stroke 9,5 cm <sup>3</sup> /stroke 15 cm <sup>3</sup> /stroke
Ratio:	with 3 cm <sup>3</sup> /stroke 1 : 32 with 9,5 cm <sup>3</sup> /stroke 1 : 12 with 15 cm <sup>3</sup> /stroke 1 : 8
Flow pressure:	3 - 8 bar
Lubricant:	oil, 20 - 700 mm <sup>2</sup> /s fluid grease (according to release list)
Temperature range:	medium 0 - 70°C ambient 0 - 40°C

#### Operating mode:

Pneumatic actuation via 3/2-way solenoid valve.  
Repositioning of the pump by spring force.



FAZ01834-00

**Order key type-no. 2566**

**2566.03.00.000**

<b>Delivery rate</b>	3 cm <sup>3</sup> /stroke	9,5 cm <sup>3</sup> /stroke	15 cm <sup>3</sup> /stroke
Code-no.	03	09	15

## Special models