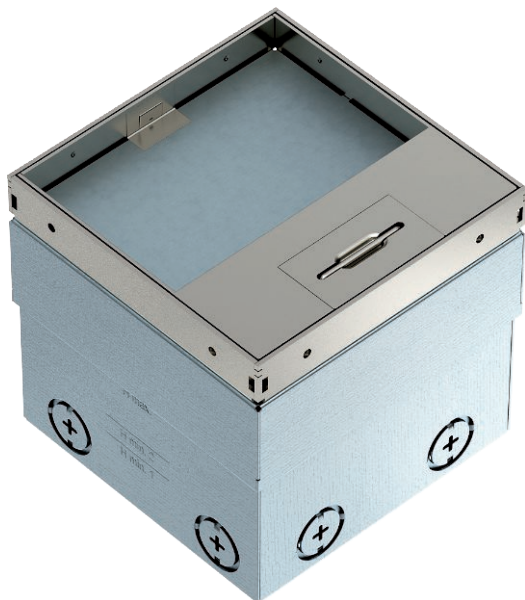


# Technical data sheet

**UDHOME2 floor socket, with floor covering recess,  
freely equippable, stainless steel**  
Item no. 7368340



Square floor socket for use in dry-care cavity and screed floors in indoor areas. Installation housing with pre-marked insertion openings for pipes (M20/M25). Cover adjustable to top edge of floor covering using four height-adjustment supports. The minimum installation depth is 110 mm, the height-adjustment range is +25 mm.

Frame and cover made of stainless steel and visible in the floor covering. Up to 2 modular data sockets can be installed in the optional mounting support. The load-bearing capacity of 15 kN is only guaranteed when in an unused state.

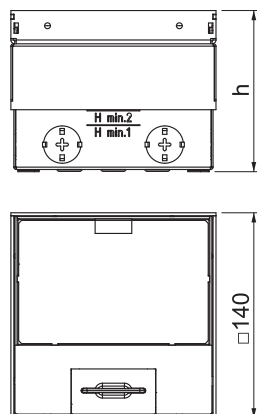


**A2** Stainless steel, rustproof

## Master data

Item no.	7368340
Type	UDHOME2 GV15
Description 1	Floor socket
Description 2	unequipped
Dimension	140x140x110
Material	Stainless steel, material A2
Material symbol	A2
Smallest sales unit (VG)	1 Piece
Weight	230,00 kg/100 pc.

## Technical data



Length	140,00 mm
Width	140,00 mm
Height	110,00 mm
Dimension h	110,00 mm
Number of installable devices	2
Cable outlet version	Swivellable cord outlet
Floor covering thickness	15,00 mm
Floor covering protection frame	<input type="checkbox"/>
Floor care	Dry
Version for	Square
Seal installation option	<input type="checkbox"/>
Application when used	6.101.1 Dry floor care
Application when unused	6.101.1 Dry floor care
Floor height	110-135 mm
Device support to accept mounting boxes	<input type="checkbox"/>
Suitable for wet care	<input type="checkbox"/>
Suitable for screed-flush closed underfloor ducts	<input type="checkbox"/>
Suitable for screed-covered underfloor ducts	<input type="checkbox"/>
Suitable for raised floor installation	<input checked="" type="checkbox"/>

# Technical data sheet

UDHOME2 floor socket, with floor covering recess,  
freely equippable, stainless steel  
Item no. 7368340



## Technical data

Suitable for cavity floor installation	<input checked="" type="checkbox"/>
Suitable for underfloor ducts	<input type="checkbox"/>
With floor covering recess	<input checked="" type="checkbox"/>
Nominal size for device installation units	2
Standard	EN 50085-2-2
Opening mechanism	Handle
Frame version	Floor covering contact edge
Heavy-duty version	<input type="checkbox"/>
Protection rating (IP) when used	IP20
Protection rating (IP) when unused	IP40
Protection rating IK code	IK10
Approvals	VDE
Vertical load, small area	to 3,000 N