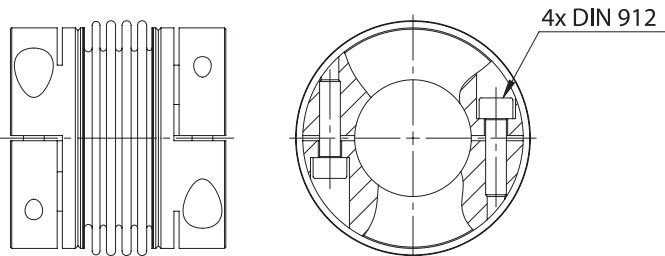


Metallbalgkupplung MKJ-S mit Klemmnabe

Metal bellow coupling MKJ-S with clamping hub



Merkmale

- Spielfreie Drehmomentübertragung
- Kleiner Einbauraum
- Hohe Temperaturbeständigkeit
- Niedriges Massenträgheitsmoment
- Ideal für Servomotoren
- Kleinste Rückstellkräfte auf die Lagerstellen

Werkstoff der Naben: Stahl
Werkstoff des Metallbalges: Edelstahl
Verbindung Balg-Nabe: geschweißt

Bestellbezeichnung / Beispiel:

MKJ-S-150 - 22H7 - 40H7
Typ+Größe Bohrung D1 Bohrung D2

Characteristics

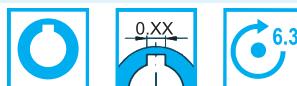
- Backlash-free torque transmission
- A small space for assembly
- High level of thermal stability
- Very low mass moment of inertia
- Ideal for servomotors
- Low restore forces on bearing points

Material of hubs: Steel
Material of bellows: Stainless steel
Connection of bellows to hub: Welded

Order description / example:

MKJ-S-150 - 22H7 - 40H7
Type+Size Bore D1 Bore D2

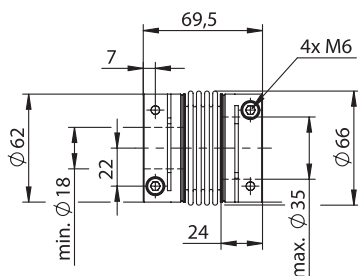
Standard Optionen / Standardized options



Gewünschte Optionen müssen im Bestelltext angegeben werden (Legende Symbole S. 7).
Desired options have to be mentioned in the order text (key symbols p. 7).

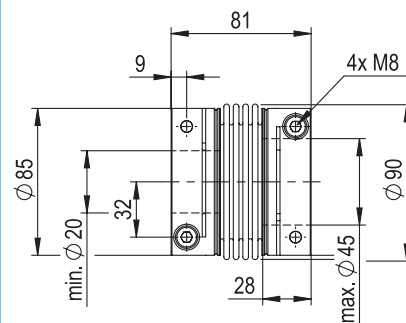
MKJ-S-15		MKJ-S-40
	15 [Nm]	40 [Nm]
	24 [10 ³ Nm/rad]	37.5 [10 ³ Nm/rad]
	400 [N/mm]	530 [N/mm]
	38 [N/mm]	39.5 [N/mm]
	±0.1 [mm]	±0.1 [mm]
	±0.8 [mm]	±0.8 [mm]
	±0.8 [Grad]	±0.8 [Grad]
	0.27 [10 ⁻³ kgm ²]	0.57 [10 ⁻³ kgm ²]
	0.70 [kg]	1 [kg]
	M5 [DIN 912-12.9]	M6 [DIN 912-12.9]
	8 M _A [Nm]	14 M _A [Nm]
	Nennmoment Nominal torque Torsionssteife Torsional stiffness Laterale Federsteife Lateral spring stiffness Axiale Federsteife Axial spring stiffness Max. lateraler Wellenversatz Max. lateral shaft misalignment Max. axialer Wellenversatz Max. axial shaft misalignment Max. angularer Wellenversatz Max. angular shaft misalignment Trägheitsmoment Inertia torque Masse Mass Klemmschrauben Clamping screws Anzugsmoment der Schrauben Tightening torque of screws	

MKJ-S-60

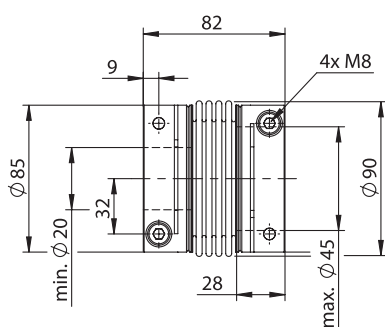


60 [Nm]	Nennmoment Nominal torque	100 [Nm]
47 [10 ³ Nm/rad]	Torsionssteife Torsional stiffness	95 [10 ³ Nm/rad]
790 [N/mm]	Laterale Federsteife Lateral spring stiffness	680 [N/mm]
71.50 [N/mm]	Axiale Federsteife Axial spring stiffness	51 [N/mm]
±0.1 [mm]	Max. lateraler Wellenversatz Max. lateral shaft misalignment	±0.1 [mm]
±0.7 [mm]	Max. axialer Wellenversatz Max. axial shaft misalignment	±0.9 [mm]
±0.8 [Grad] [Degree]	Max. angularer Wellenversatz Max. angular shaft misalignment	±0.8 [Grad] [Degree]
0.58 [10 ⁻³ kgm ²]	Trägheitsmoment Inertia torque	2.40 [10 ⁻³ kgm ²]
1 [kg]	Masse Mass	2.20 [kg]
M6 [DIN 912-12.9]	Klemmschrauben Clamping screws	M8 [DIN 912-12.9]
14 M _A [Nm]	Anzugsmoment der Schrauben Tightening torque of screws	35 M _A [Nm]

MKJ-S-100

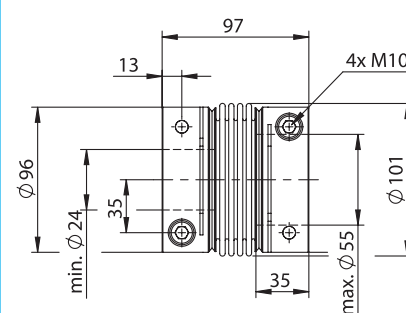


MKJ-S-150

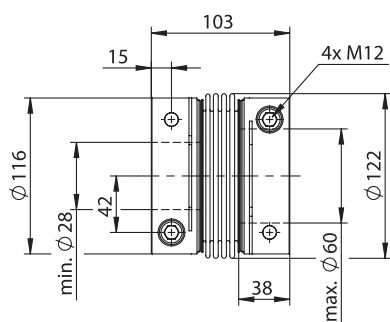


150 [Nm]	Nennmoment Nominal torque	200 [Nm]
110 [10 ³ Nm/rad]	Torsionssteife Torsional stiffness	160 [10 ³ Nm/rad]
110 [N/mm]	Laterale Federsteife Lateral spring stiffness	1500 [N/mm]
135 [N/mm]	Axiale Federsteife Axial spring stiffness	115 [N/mm]
±0.1 [mm]	Max. lateraler Wellenversatz Max. lateral shaft misalignment	±0.1 [mm]
±0.9 [mm]	Max. axialer Wellenversatz Max. axial shaft misalignment	±0.9 [mm]
±0.7 [Grad] [Degree]	Max. angularer Wellenversatz Max. angular shaft misalignment	±0.7 [Grad] [Degree]
2.40 [10 ⁻³ kgm ²]	Trägheitsmoment Inertia torque	4.70 [10 ⁻³ kgm ²]
2.20 [kg]	Masse Mass	3.40 [kg]
M8 [DIN 912-12.9]	Klemmschrauben Clamping screws	M10 [DIN 912-12.9]
35 M _A [Nm]	Anzugsmoment der Schrauben Tightening torque of screws	69 M _A [Nm]

MKJ-S-200



MKJ-S-350



350 [Nm]	Nennmoment Nominal torque	500 [Nm]
230 [10 ³ Nm/rad]	Torsionssteife Torsional stiffness	280 [10 ³ Nm/rad]
1850 [N/mm]	Laterale Federsteife Lateral spring stiffness	2300 [N/mm]
85 [N/mm]	Axiale Federsteife Axial spring stiffness	115 [N/mm]
±0.1 [mm]	Max. lateraler Wellenversatz Max. lateral shaft misalignment	±0.1 [mm]
±1.0 [mm]	Max. axialer Wellenversatz Max. axial shaft misalignment	±0.9 [mm]
±0.7 [Grad] [Degree]	Max. angularer Wellenversatz Max. angular shaft misalignment	±0.7 [Grad] [Degree]
10.70 [10 ⁻³ kgm ²]	Trägheitsmoment Inertia torque	10.80 [10 ⁻³ kgm ²]
5.30 [kg]	Masse Mass	5.30 [kg]
M12 [DIN 912-12.9]	Klemmschrauben Clamping screws	M12 [DIN 912-12.9]
120 M _A [Nm]	Anzugsmoment der Schrauben Tightening torque of screws	120 M _A [Nm]

MKJ-S-500

