



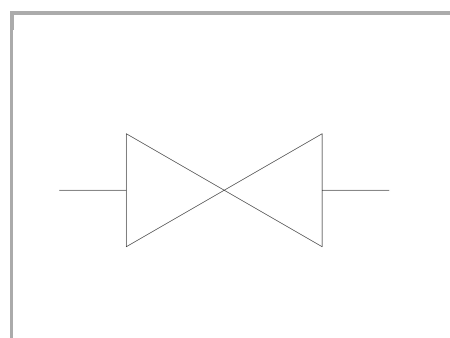
## 90° gauge isolators

### FT 291

90° Gauge isolator for manometer, threads available from size 1/4" , with swivel nut for manometer direction when mounting

**90° needle valve with handwheel**

**Carbon steel**



## Technical information

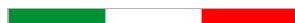
### Technical description

The gauge isolator needle valves FT 291 (90° angle) are normally used to protect the pressure gauge as they have the double function of dampening pressure shock, when opening, and of isolating it from pressure line. Moulded in high-resistance steel, protected by an accurate treatment, subjected to strict tests, they ensure reliability and long life. A rotating swivel nut allows the user to plug the manometer, directing it to the more suitable position, with a single blocking operation. The sealing, supplied as standard, and inserted in the nut, prevents any leakages between the connection and the gauge. For pressure gauge with taper threads, it will be necessary to use copper washers FT 1201 shown on the technical catalogue and (to be requested separately). Equipped with connectors FT 299-24, they also allow the connection with 1/2" BSP port (as an alternative we recommend the use of the series FT 290-12). Suitable for pressure up to 400 bar and temperature from -20° to +100° they can be panel mounted by use of panel nut (G), supplied on request. On request: • Versions with connections female/female (01) • For rigid pipes (04) • For flexible pipes (05) • Viton Seals (V) • Complete with lock nut (G) indicating whether KM or hexagonal • Version in AISI 316 code FT 2291

### Materials

CORPO VALVOLA / VALVE BODY	Acciaio/Steel 11 S Mn Pb 37-UNI EN 10087
SPILLO / NEEDLE	Acciaio/Steel 35 S Mn Pb 10-UNI EN 10087
GUARNIZIONI / GASKETS	Di serie NBR - A richiesta FPM / Standard NBR-on demand FPM
ANELLI ANTIESTRUSIONE / ANTI-EXTRUSION RING	PTFE
MANOPOLA TIPO MP / KNOB TYPE MP	NYLON 66

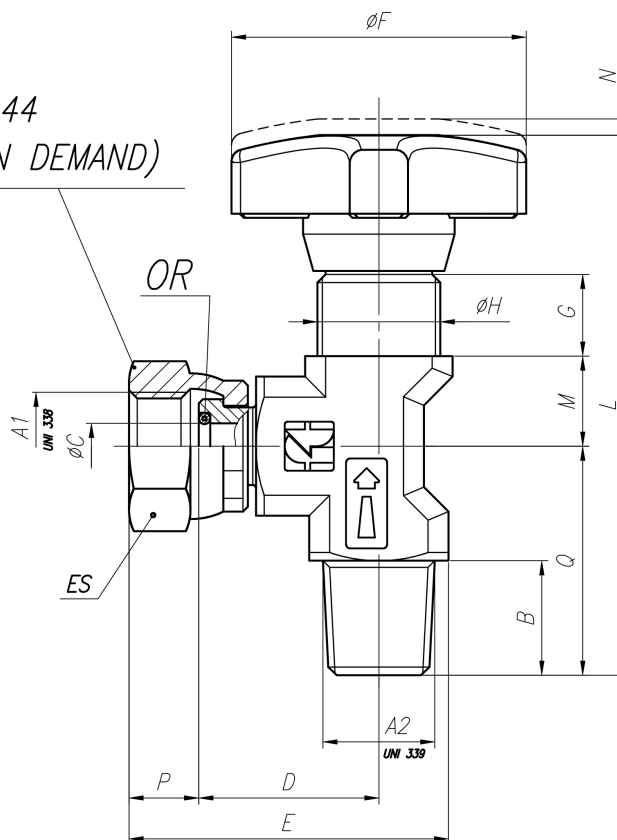
### Dimensional tables and drawings

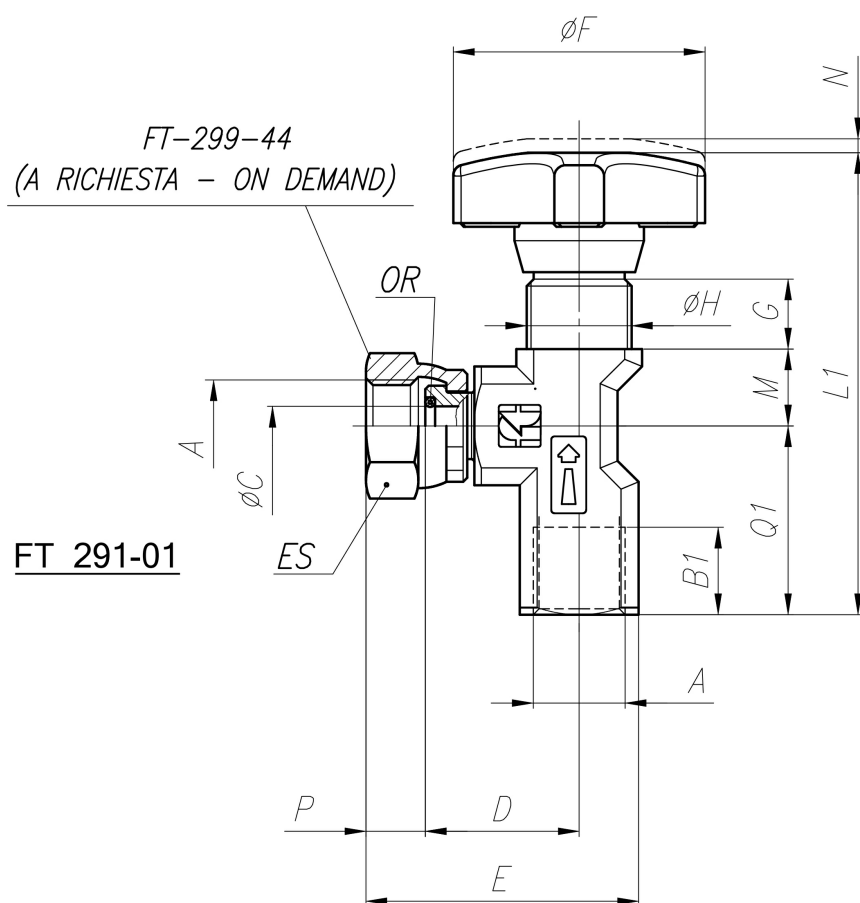
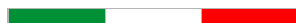


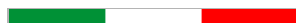
FT 291									
TIPO / TYPE	A1 UNI 338	A2 UNI 339	B	ØC	D	E	ØF	G	H
14	1/4" G	1/4" Gc	14	5,6	22,0	40	34	10	M15x1
TIPO / TYPE	L	M	N	P	Q	OR	Es.	PESO / WEIGHT KG	
14	66	11	2	8,5	28	2018	18	0,105	
FT 291-01 , FT 291-04 , FT 291-05									
TIPO / TYPE	A	B1	B2	B3	ØC	D	E	ØF	G
01	1/4" G	11	-	-	5,6	22	40	34	10
04	1/4" G	-	15	-	5,6	22	40	34	10
05	1/4" G	-		6,5	5,6	22	40	34	10
TIPO / TYPE	H	L1	L2	L3	M	N	P	Q1	Q2
01	M15x1	65	-	-	11	2	9,5	27	-
04	M15x1	-	73	-	11	2	9,5	-	20
05	M15x1	-	-	69,5	11	2	9,5	-	-
TIPO / TYPE	Q3	R	OR	Es.	PESO / WEIGHT KG				
01	-	6	2018	18	0,125				
04	-	6	2018	18	0,135				
05	25	6	2018	18	0,130				

FT-299-44  
(A RICHIESTA - ON DEMAND)

FT 291

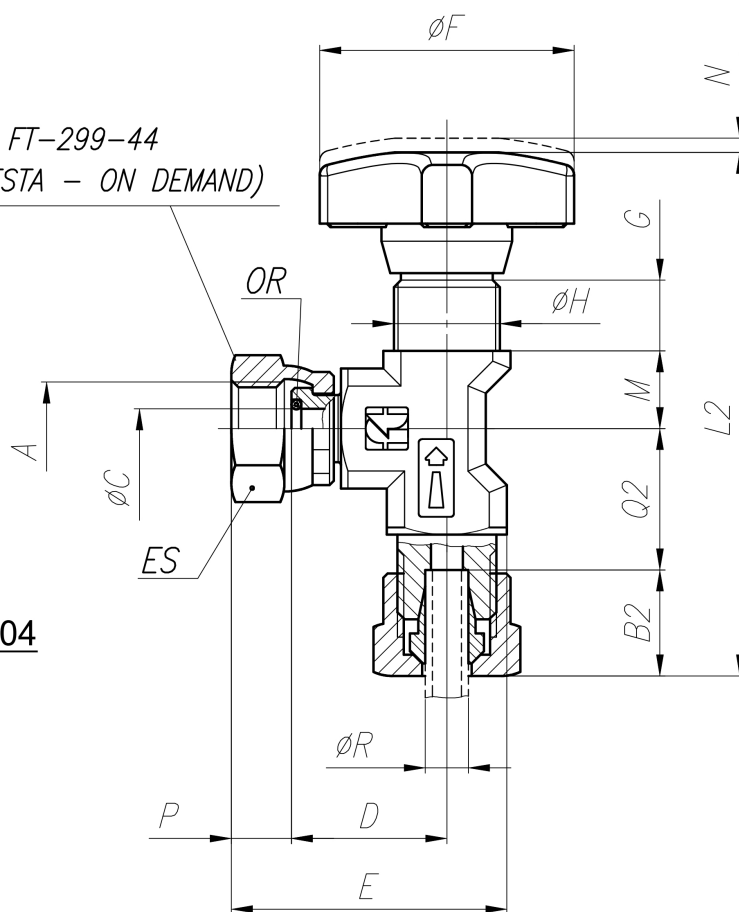


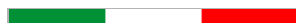




*FT-299-44*  
*(A RICHIESTA - ON DEMAND)*

**FT 291-04**





*FT-299-44*  
*(A RICHIESTA - ON DEMAND)*

FT 291-05

