

Ref	Part No	Description	Material	Qty
1	007920-101Q	BODY	SA 216-WCB CARB ST	1
2	007603-101Q	CASING	SA 216-WCB CARB ST	1
3	007610-101	CAP	SA 216-WCB CARB ST	1
4	006458-601	NOZZLE	ASTM A479-316/316L STELLITED	1
5	007446-236	DISC	STELLITE 6	1
6	006701-263	DISC HOLDER	ASTM A479-316/316L	1
8	006765-104	BLOWDOWN RING	SA 351-CF8M ST ST	1
9	006182-127	GUIDE PLATE	A747-CB7Cu-1H1150DBL	1
10	005963-266	SPINDLE	AISI 431	1
11	006081-263	LOWER SPRING PLATE	ASTM A479-316/316L	1
12	006874-272	ADJUSTING SCREW	ASTM A479-410	1
13	007234-263	LOCKING NUT	ASTM A479-316/316L	1
14	007235-266	SETTING SCREW	AISI 431	1
15	007236-263	SET SCREW ROD	ASTM A479-316/316L	1
18	014588-210	STUD	SA 193-B7 CR/MOL ST	6
19	008560-205	NUT	SA 194-2H CARB ST	6
20	014423-210	STUD	SA 193-B7 CR/MOL ST	4
21	009009-205	NUT	SA 194-2H CARB ST	4
22	C1932-316	SPRING	INCONEL X750	1
27	012593-944	BODY GASKET	GARLOCK 9900	2
28	012533-944	CAP GASKET	GARLOCK 9900	1
29	012418-944	SET SCREW GASKET	GARLOCK 9900	1
31	013674-235	BALL	AISI 440C ST ST	2
32	006082-263	UPPER SPRING PLATE	ASTM A479-316/316L	1
33	023889-409	DATA PLATE	321 ST.ST.	1
34	008324-421	HAMMER DRIVE SCREW	ELECTRO BRASSED ST	4
37	012404-944	GAG PLUG GASKET	GARLOCK 9900	1
38	007233-254	GAG PLUG	ASTM A108-1021	1
40	007232-254	GAGSCREW	ASTM A108-1021	1
42	008245-276	DRAIN PLUG	HTS HOLO-KROME	1
54	008900-269	SPLIT PIN	ASTM A479-321	1
57	007330-227	GLAND	A582-416	1
58	012752-709	GLAND PACKING	BELDAM 8545	1
61	007231-266	SPINDLE NUT	AISI 431	1
63	013792-104	FORKED LEVER	SA 351-CF8M ST ST	1
70	005965-266	EASING GEAR SPINDLE	AISI 431	1
71	006614-227	NECK BUSH	A582-416	1
72	006615-227	SPINDLE BUSH	A582-416	1
73	008059-254	EASING GEAR LEVER	ASTM A108-1021	1
75	008322-269	GRUBSCREW	ASTM A479-321	1

Dimensions

Orifice Area

Inlet

Outlet

Approx Valve Weight

A = 4.125" ( 105 mm)

B = 1.437" ( 36 mm)

C = 17.875" ( 454 mm)

D = 4.500" ( 114 mm)

0.110 sq ins (0.71 cm sq)

1" ANSI 600 RF 6.3 Ra (250 AARH)

2" ANSI 150 RF 6.3 Ra (250 AARH)

42 lb (19 kg)

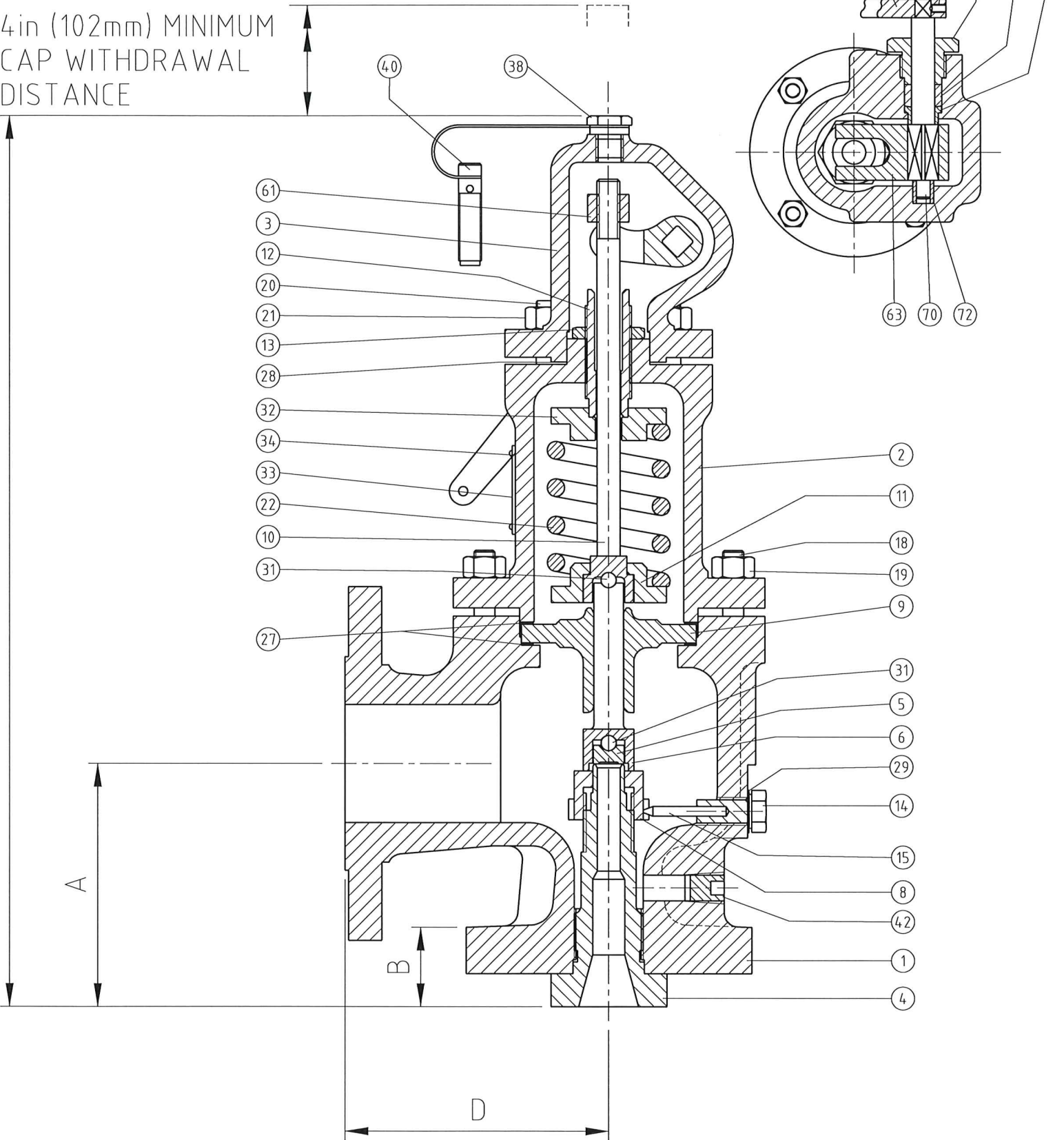
Valve Type

Set Pressure

1D2H2311Z0/GP

9.80 MPAG

4in (102mm) MINIMUM  
CAP WITHDRAWAL  
DISTANCE



General Arrangement Of  
WB Series Safety Relief Valve

Date		Item	Issue
Drn.	A.W.		
Chd.		001	