

**relief valve, screw-in type
(direct acting, adjustable)
RV6-10.-.-0-..**

EATON
Hydraulics



MP-110-101-00

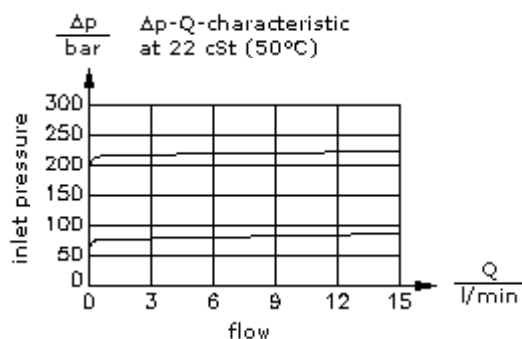
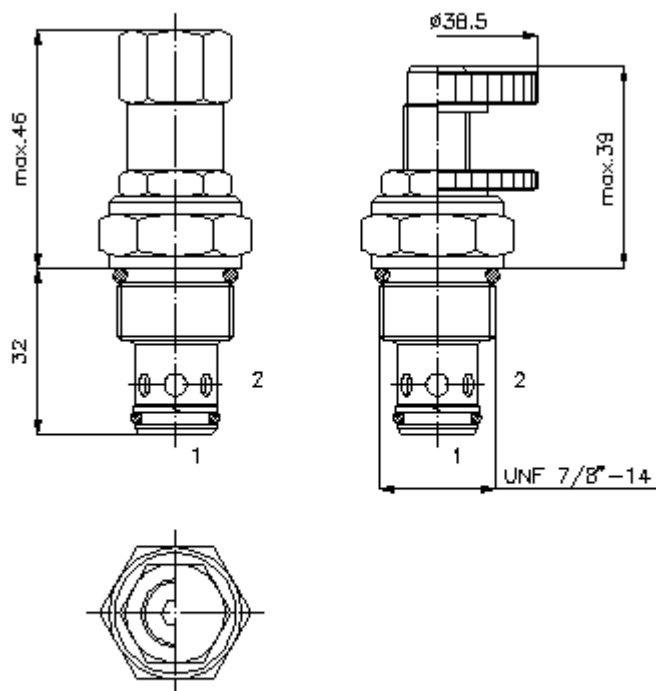
(Subject to change!)

HEX 3/4"

HEX 1"
(torque
cartridge:
48 - 54 Nm)

cavity:
C-10-2
see
data-sheet no.:
IK-100-109-00

HEX 3/16"



**relief valve, screw-in type
(direct acting, adjustable)
RV6-10.-.-0-..**



Ordering example:

RV6 - 10N - C - 0 - 25
| | | | |
A **B** **C** **D** **E**

MP-110-101-00

(Subject to change!)

Model code:



design

relief-valve
ball type
direct acting



size and sealing

10N = Buna (NBR)
10V = Viton (FPM)



adjustment

S = screw adjustment
C = cap
K = handknob



construction

0 = screw-in valve



pressure range

25 = 3.4 - 175 bar
50 = 140.0 - 350 bar

Technical Data:

nominal pressure: 350 bar

nominal flow: 15 l/min

weight: 0.22 kg

temperature range: -40°C to 120°C

fluids: hydraulic oil as per DIN 51524 T1 (ISO TC 131)

max. leakage: 5 drops/min at 22 cSt (50°C) and 80% crack pressure

seals: optional Buna (NBR) or Viton (FPM), as well as Teflon wascher (PTFE)

cavity: C-10-2 see datasheet no. [IK-100-109-00](#)

housing: 2LH-10.-B.. see datasheet no. [IH-100-000-00](#)

seal kit: SP-MDS-10N-21 (NBR), SP-MDS-10V-21 (FPM)